

Male rod ends **DIN ISO 12240-4** ISO

CMMRH Steel/self-lubricating bronze contact CMLLH

- Male threaded rod end conforming to DIN ISO 12240-4 K series

- Static axial load = 0.2 x static radial load

- Materials:

Sphere: Steel 100CG ground and polished

Insert: Bronze

Housing:

sizes 5 to 12- low carbon steel

sizes 16 to 35 - high carbon steel alloy,
surface is galvanized and passivated

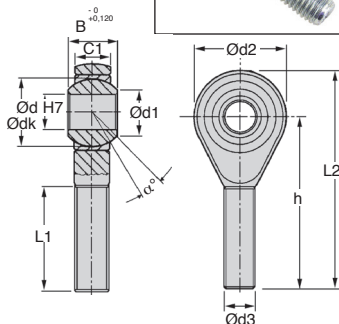
- Working temperature: -30°C to +120°C
(150°C occasionally)

Advantages

- Self-lubricating
- Maintenance free
- Bearing surface wear-resistant
- Low friction

Application

- Oscillating movements



DISCOUNTS

Qty	1+	6+	20+	40+	60+
Disc.	List	-15%	-20%	-30%	On request

Part number	Ød	Ød3	B	C1	Ød1	Ød2	Ødk	h	L1	L2
CMM.00.05	5	M5 x 0,8	8	6,00	7,70	18	11,112	33	19	42
CMM.00.06	6	M6 x 1	9	6,75	8,90	20	12,700	36	21	46
CMM.00.08	8	M8 x 1,25	12	9,00	10,40	24	15,875	42	25	54
CMM.00.10	10	M10 x 1,5	14	10,50	12,90	28	19,050	48	28	62
CMM.00.12	12	M12 x 1,75	16	12,00	15,40	32	22,225	54	32	70
CMM.00.16	16	M16 x 2	21	15,00	19,30	42	28,575	66	37	87
CMM.00.20	20	M20 x 2,5	25	18,00	24,30	50	34,925	78	45	103

Part number		Radial static load F _s (daN)	Axial holding load of the ball (daN)	Movement angle α°	Weight (g)	Stock* RH	Stock* LH	Price each 1 to 5	
RH threading	LH threading							RH	LH
CMM.00.05/RH	CMM.00.05/LH	300	100	13	15	✓	-	19,52 €	22,49 €
CMM.00.06/RH	CMM.00.06/LH	400	120	13	22	✓	✓	11,89 €	13,77 €
CMM.00.08/RH	CMM.00.08/LH	800	170	14	38	✓	✓	12,56 €	14,54 €
CMM.00.10/RH	CMM.00.10/LH	1 300	200	13	63	✓	✓	14,11 €	16,33 €
CMM.00.12/RH	CMM.00.12/LH	1 700	270	13	100	✓	✓	17,13 €	19,80 €
CMM.00.16/RH	CMM.00.16/LH	4 800	550	15	195	✓	✓	37,34 €	43,13 €
CMM.00.20/RH	-	5 200	600	14	370	✓	-	57,06 €	-

*Depending on availability - Dimensions in mm

Our other products



PSG35

Spur gear - precision range, Stainless steel 303



RTT

Locking Assembly, Medium/high torque



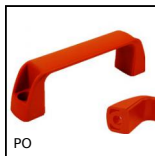
LR

Precision locknut, Precision locknut



PTKFss

Fixable foot for the food industry, Stainless steel - 3-A standard



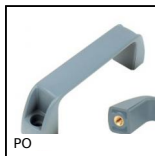
PO

Pull handle - Multi-sector, Smooth hole



PRF1932

Standard aluminium profile, 19 x 32 mm



PO

Pull handle - Multi-sector, Tapped recessed insert



RFV50

Stainless steel worm and wheel gearbox, up to 80 Nm



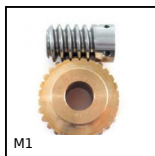
HDSS

Needle roller double universal joint - Stainless steel, Heavy



B3PAN

Panamech, Multi-Beam stainless steel, Stainless steel - with



M1

Worm and wheel set, Bronze



H0

Crossed helical gear crossed axis at 90°, Steel 20NCD2

Complementary products



CMM_SS

Male rod ends DIN ISO12240-4, Stainless steel / bronze - Economy range



SME

Male rod ends, Stainless steel / PTFE