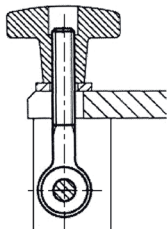
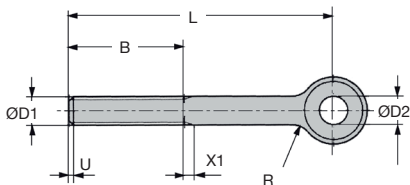
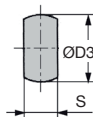


- Eye bolt
- Stainless steel
- Conforms to DIN 444 type B



Typical application



U = max 2 threads

X1 conforms to DIN76

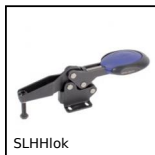
DISCOUNTS

Qty	1+	5+	10+	20+	30+
Disc.	List	-5%	-10%	-15%	On request

Part number	L	ØD1	ØD2	ØD3	B	S	R	Weight (kg)	Stock*	Price each 1 to 4
CMA1-05-50/SS	50	M5	5	12	16	6	2,5	0,011	✓	13,18 €
CMA1-06-50/SS	50	M6	6	14	18	7	4	0,016	✓	10,46 €
CMA1-06-75/SS	75	M6	6	14	18	7	4	0,021	✓	11,90 €
CMA1-08-50/SS	50	M8	8	18	22	9	4	0,030	✓	11,99 €
CMA1-08-75/SS	75	M8	8	18	22	9	4	0,040	✓	13,63 €
CMA1-10-75/SS	75	M10	10	20	26	12	4	0,055	✓	14,03 €
CMA1-10-100/SS	100	M10	10	20	26	12	4	0,070	✓	14,63 €
CMA1-12-75/SS	75	M12	12	25	30	14	6	0,085	✓	17,23 €
CMA1-12-100/SS	100	M12	12	25	30	14	6	0,100	✓	18,89 €
CMA1-12-120/SS	120	M12	12	25	30	14	6	0,124	-	19,99 €
CMA1-12-130/SS	130	M12	12	25	36	14	6	0,135	✓	20,64 €
CMA1-16-130/SS	130	M16	16	32	44	17	6	0,244	✓	37,08 €

*Depending on availability - Dimensions in mm

Our other products



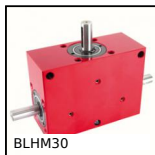
SLHHlok

Horizontal toggle clamp, Horizontal toggle clamp / horizontal foot



CM_CO

Tools Hygienic Usit® and Hygienic Design®, Protective inserts for ...



BLHM30

Right angled gearbox, double output shafts, up to 4.4 Nm



BAG0

Locking rings in steel, Steel



PRF_ECL

Nut for aluminium profile, Steel square nut with tab



VTHbr

Hexagonal headed screw VTH - DIN933, Brass



BFA

Shaft locking washer, E clip



SFWR

End support, Surface mounting



PRF_ROUL

Castor for aluminium profile, No brake



NSB

Standard linear bearing housing,



HTD14M_85

HTD Heavy duty timing pulley, HTD14



ES

Simple support base (bipod), Plastic

Complementary products



CMA

Eye bolt, Steel