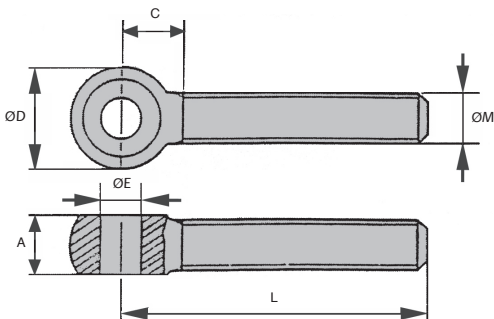


- Eye bolt
- Stamped ring, closed
- Conforms to UNI 6058
- ISO thread
- Material: Blackened steel C40



### DISCOUNTS

Qty	1+	20+	40+	60+	80+	100+
Disc.	List	-5%	-10%	-15%	-20%	On request

Part number	ØM	L	A	C	ØD	ØE	Weight (kg)	Stock*	Price each 1 to 19
CMA1-06	M6	50	7	8,5	12	5	0,012	✓	7,17 €
CMA1-08	M8	60	9	11,1	16	6	0,025	✓	7,47 €
CMA1-10	M10	80	12	13,8	20	8	0,048	✓	10,32 €
CMA1-12	M12	90	14	16,4	24	10	0,088	✓	12,19 €
CMA1-14	M14	120	16	19,0	28	12	0,153	✓	16,19 €
CMA1-16	M16	140	18	21,0	32	14	0,303	✓	16,59 €
CMA1-18	M18	150	20	24,2	36	16	0,328	-	18,51 €
CMA1-20	M20	160	22	26,2	40	18	0,431	✓	22,98 €

\*Depending on availability - Dimensions in mm

## Our other products



SPIT

Floor mounting levelling plate, With anchoring point



ZG125

Plastic spur gear, Machined plastic (delrin)



WINGbr

Wing screw, hand tightened DIN316, Brass DIN 316



BIM

Indexing plunger mini, miniature



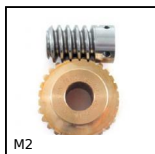
PWC

Powercoil thread inserts, Kit Powercoil - with or without insertion ...



PTA150

Articulated levelling foot, pressed base Ø150, Ø 150



M2

Worm and wheel set, Bronze



PO

Pull handle - Multi-sector, Tapped recessed insert



PRF\_CLIP\_45

Cable clip for aluminium profile, For cable chute



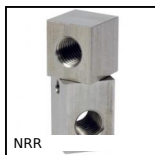
GE\_ET\_2RS

Spherical bushing, Hard chromium / Teflon contact with



ACA

Steel splined shaft, Steel



NRR

Adjustable support clamp, Adjustable support clamp

## Complementary products



CMAss

Eye bolt stainless steel, Stainless steel