

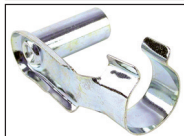
Clevis and clip, short version



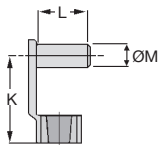
CLS CLP

Steel

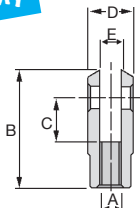
- Trunnion link
- Material: Medium hard steel 9S Mn Pb28, R= 500 N/mm²
- Conforms to DIN 71752
- Not sold individually, please contact us for details



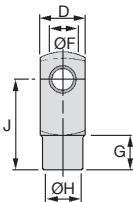
Quick assembly



CLP trunnion



CLS end fitting



DISCOUNTS

Qty	1+	6+	20+	50+	100+	250+
Disc.	List	-10%	-20%	-30%	-40%	On request

End fitting

Part number	A	B	C	D	E (B13)	ØF (H9)	G	ØH	J	Static load Co (daN)	Stock*	Price each 1 to 5
											✓	€
CLS-4	M4 x 0,70	21	8	8	4	4	6,00	8	16	320	✓	2,25 €
CLS-5	M5 x 0,80	26	10	10	5	5	7,50	9	20	500	✓	1,75 €
CLS-6	M6 x 1,00	31	12	12	6	6	9,00	10	24	720	✓	1,56 €
CLS-8	M8 x 1,25	42	16	16	8	8	12,00	14	32	1280	✓	1,96 €
CLS-10	M10 x 1,50	52	20	20	10	10	15,00	18	40	2000	✓	2,84 €
CLS-12	M12 x 1,75	62	24	24	12	12	18,00	20	48	2880	✓	5,32 €
CLS-16	M16 x 2,00	83	32	32	16	16	24,00	26	64	5120	✓	10,94 €
CLS-10C	M10 x 1,25	52	20	20	10	10	15,00	18	40	-	✓	3,01 €
CLS-12C	M12 x 1,25	62	24	24	12	12	18,00	20	48	-	✓	5,32 €
CLS-16C	M6 x 1,50	83	32	32	16	16	24,00	26	64	-	✓	11,01 €

Trunnion spring

Part number	K	L	ØM	Stock*	Price each 1 to 5
				✓	€
CLP-4	15	9	4	✓	0,69 €
CLP-5	19	12	5	✓	0,76 €
CLP-6	23	14	6	✓	0,76 €
CLP-8	31	19	8	✓	0,69 €
CLP-10	39	23	10	✓	0,82 €
CLP-12	47	28	12	✓	1,37 €
CLP-16	62	36	16	✓	2,39 €

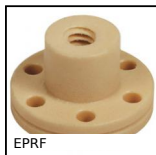
*Depending on availability - Dimensions in mm

Our other products



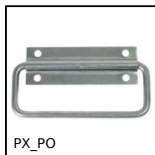
RBGpl

Swivel castor with plate, Steel - grey rubber



EPRF

High helix leadscrew, Flanged nut - up to 40mm per rotation



PX_PO

Carrying handle, standard



UGCG

Actuator guide kit, Long housing



VTLM

3 lobed handle, Polyamide - Steel



NCT

Square tube connector, Fixed angle



STRIP

Sealing brush strip, 3m length



PGM86-M5

Pull handle, Thermoplastic



HTD5M_25

HTD Heavy duty timing pulley, HTD5 Aluminium



LRRss

Latch, Spring loaded latch - stainless steel



SHNbr

Hexagonal nut DIN934, Brass



DHX

Dowel pin internal thread, Extractable DIN 7979D

Complementary products



CLSLCP

Clevis components, short version, Steel - Short range