

For use with a male clevis

CLR
CLRss

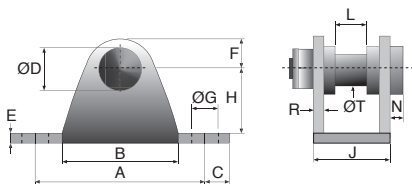
- For fixing a gas spring
- Materials:
Steel
316L stainless steel

Advantages

- Allows gas springs to be mounted using a mounting plate and a CLM male clevis



NEW!



DISCOUNTS

Qty	1+	6+	10+	15+	20+
Disc.	List	-10%	-15%	-20%	On request

Part number	A	B	C	E	F	ØG	H	J	ØD	ØT	N	L	R	Max load (N)	Price each 1 to 5
Steel															
CLR-6	51	36	9,5	2,5	9	6,5	20	18	13	6	4,0	6,5	2,5	500	15,46 €
CLR-8	51	36	9,5	2,5	9	6,5	20	18	13	8	4,0	13	2,5	1800	15,46 €
Stainless steel															
CLR-6/SS	51	36	9,5	2,5	9	6,5	20	18	13	6	4,0	6,5	2,5	500	110,64 €
CLR-8/SS	51	36	9,5	2,5	9	6,5	20	18	13	8	4,0	13	2,5	1800	101,71 €

Dimensions in mm

Our other products



PCH

Knob for gripping,
Mushroom



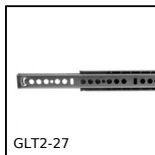
PTA80

Articulated levelling
foot, pressed base
Ø80, Ø 80



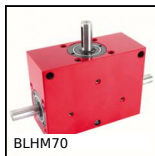
CTZY

Diabolo shaped elasto
mount, Steel



GLT2-27

Telescopic drawer
runners for groove
mounting, Partial
extension



BLHM70

Right angled gearbox,
up to 128 Nm



PRES4HR

Manual workbench
press, Force up to
600kg



VTLF

3 lobed handle,
Polyamide - Brass



MCLred

Reducing sleeve
female/female,
Cylindrical - steel



BSB

Ballscrew bearing
unit, Support



ACLEPP

Right angled bracket
for aluminium profile,
4 holes



AT5-16ECO

AT type timing pulley,
Economy range - AT5
aluminium



HLC28

Right angle spiro
bevel gearbox, Up to
182Nm

Complementary products



CLM

Male clevis end, Steel
short



COA-COG

Surface mounting
plate, Surface
mounting plate for
clevis