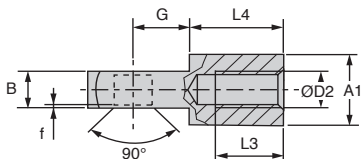
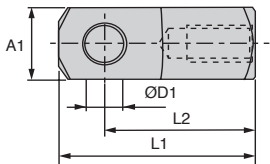
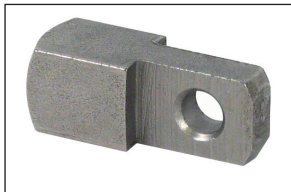


CLM CLMss

Steel or stainless steel

- Clevis link
- Threaded end piece for clevis conforming to **DIN71752, short version**
- Steel 11SMnPb30+C, galvanised
- Stainless steel 303



DISCOUNTS Steel

Qty	1+	10+	20+	50+
Disc.	List	-10%	-15%	On request

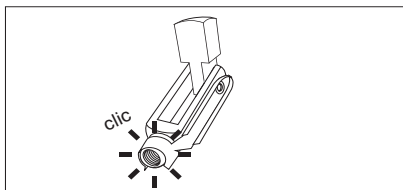
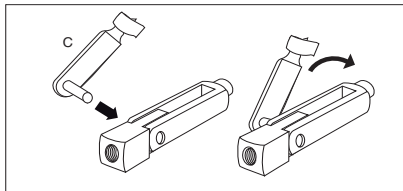
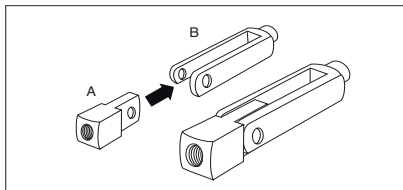
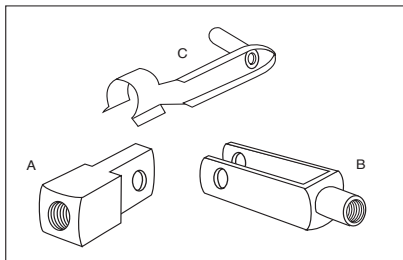
DISCOUNTS Stainless steel

Qty	1+	4+	10+	20+
Disc.	List	-10%	-15%	On request

Part number	ØD1 H9	ØD2	A1 B	L1 h11	L2 +/-0,5	L3 +/-0,3	L4	G +/-0,2	f +/-0,5	Weight (g)	Price each 1 to 5		
Steel													
CLM-4	4	M4x0,7	4	8	21	16	6	10,0	6,0	0,5	6	✓	1,92 €
CLM-5	5	M5x0,8	5	10	26	20	8	12,5	7,5	0,5	12	✓	1,85 €
CLM-6	6	M6x1	6	12	31	24	11	15,0	9,0	0,5	21	✓	2,69 €
CLM-8	8	M8x1,25	8	16	42	32	14	20,0	12,0	0,5	51	✓	3,64 €
CLM-10	10	M10x1,5	10	20	52	40	18	25,0	15,0	0,5	98	✓	3,43 €
CLM-12	12	M12x1,75	12	24	62	48	22	30,0	18,0	0,5	168	✓	8,05 €
CLM-16	16	M16x2	16	32	83	64	30	40,0	24,0	1,0	397	✓	10,08 €
Stainless steel													
CLM-4/SS	4	M4x0,7	4	8	21	16	6	10,0	6,0	0,5	6	✓	5,33 €
CLM-5/SS	5	M5x0,8	5	10	26	20	8	12,5	7,5	0,5	12	✓	7,56 €
CLM-6/SS	6	M6x1	6	12	31	24	11	15,0	9,0	0,5	21	✓	10,97 €
CLM-8/SS	8	M8x1,25	8	16	42	32	14	20,0	12,0	0,5	51	✓	9,52 €
CLM-10/SS	10	M10x1,5	10	20	52	40	18	25,0	15,0	0,5	98	-	8,98 €
CLM-12/SS	12	M12x1,75	12	24	62	48	22	30,0	18,0	0,5	168	-	12,55 €
CLM-16/SS	16	M16x2	16	32	83	64	30	40,0	24,0	1,0	397	-	36,10 €

*Depending on availability - Dimensions in mm

Instruction guide



Our other products



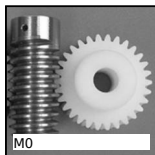
CLSCLP

Clevis components, short version, Steel - short range



DOMI80

Connecting kits, XY linking kit



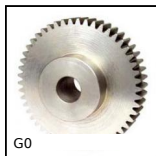
M0

Worm and wheel set, Machined plastic (delrin)



PRF_VTM

Hammerhead screw, Hammerhead screw



G0

Steel spur gear, Steel 20NC2



PRF4590

Standard aluminium profile, 45 x 90 mm



MHX

Hexagonal threaded sleeve, Hexagonal - steel



DOMI50

Accessories, Turntable



KKB-AR

Linear bearing with inclined ball tracks,



PSG25

Spur gear - precision range, Case hardened



LFM2

Steel leadscrew, Medium carbon steel -



CHMR30

Worm and wheel gear reducer, up to 28 Nm

Complementary products



CLM

Male clevis end, Steel short



COA-COG

Surface mounting plate, Surface mounting plate for clevis



CLR

Straight clevis, Straight clevis for use with a male clevis



CNA-CNG

Right angled mounting plate, Right angled mounting plate for clevis