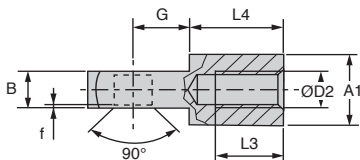
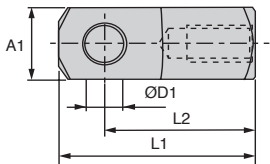
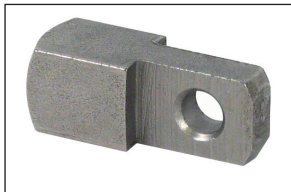


CLM CLMss

Steel or stainless steel

- Clevis link
- Threaded end piece for clevis conforming to **DIN71752, short version**
- Steel 11SMnPb30+C, galvanised
- Stainless steel 303



DISCOUNTS Steel

Qty	1+	10+	20+	50+
Disc.	List	-10%	-15%	On request

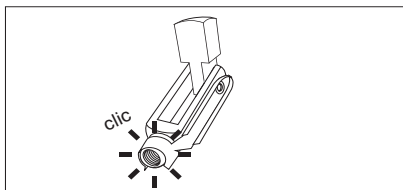
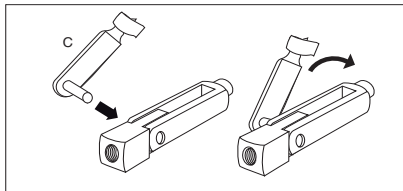
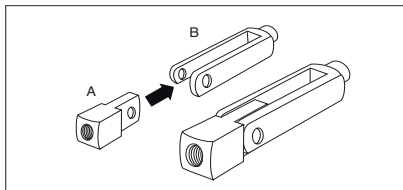
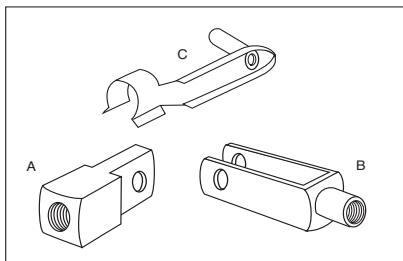
DISCOUNTS Stainless steel

Qty	1+	4+	10+	20+
Disc.	List	-10%	-15%	On request

Part number	ØD1 H9	ØD2	A1 B	h11	L1 +/-0,5	L2 +/-0,3	L3	L4 +/-0,2	G +/-0,5	f +/-0,2	Weight (g)	Price each 1 to 5
Steel												
CLM-4	4	M4x0,7	4	8	21	16	6	10,0	6,0	0,5	6	✓ 1,92 €
CLM-5	5	M5x0,8	5	10	26	20	8	12,5	7,5	0,5	12	✓ 1,85 €
CLM-6	6	M6x1	6	12	31	24	11	15,0	9,0	0,5	21	✓ 2,69 €
CLM-8	8	M8x1,25	8	16	42	32	14	20,0	12,0	0,5	51	✓ 3,64 €
CLM-10	10	M10x1,5	10	20	52	40	18	25,0	15,0	0,5	98	✓ 3,43 €
CLM-12	12	M12x1,75	12	24	62	48	22	30,0	18,0	0,5	168	✓ 8,05 €
CLM-16	16	M16x2	16	32	83	64	30	40,0	24,0	1,0	397	✓ 10,08 €
Stainless steel												
CLM-4/SS	4	M4x0,7	4	8	21	16	6	10,0	6,0	0,5	6	✓ 5,33 €
CLM-5/SS	5	M5x0,8	5	10	26	20	8	12,5	7,5	0,5	12	✓ 7,56 €
CLM-6/SS	6	M6x1	6	12	31	24	11	15,0	9,0	0,5	21	✓ 10,97 €
CLM-8/SS	8	M8x1,25	8	16	42	32	14	20,0	12,0	0,5	51	✓ 9,52 €
CLM-10/SS	10	M10x1,5	10	20	52	40	18	25,0	15,0	0,5	98	- 8,98 €
CLM-12/SS	12	M12x1,75	12	24	62	48	22	30,0	18,0	0,5	168	- 12,55 €
CLM-16/SS	16	M16x2	16	32	83	64	30	40,0	24,0	1,0	397	- 36,10 €

*Depending on availability - Dimensions in mm

Instruction guide



Our other products



F7-SF-5M

Multifunction display,
Mounting bracket for
front mounting



GG2

Ground spur gear,
Heat treated steel



AC

Strike for toggle latch,
13mm



HW-HT

Half-rail guide, Rail



RPP

Connecting plate for
RPP type timing belts,
RPP8



BEF

Bearing housing for
miniature ballscrew,
Bearing housing



EZY

Cylindrical stop, Steel



ACLEFS

Floor anchor for
aluminum profile,
Adjustable



MSP19

Masterplate®
glueable insert Ø19,
Cylindrical with



DOMI50

Connecting kits, XY
linking kit



ACM_AZ

Mounting bracket for
bonnet fastener, Hook



SLV

Vertical toggle clamp,
Vertical Lever Clamp -
stainless steel

Complementary products



CLM

Male clevis end, Steel
short



COA-COG

Surface mounting
plate, Surface
mounting plate for
clevis



CLR

Straight clevis,
Straight clevis for use
with a male clevis



CNA-CNG

Right angled
mounting plate, Right
angled mounting
plate for clevis