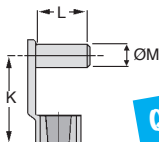


## Steel

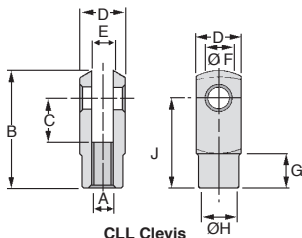
## CLL CLLP

- Material: Medium hard steel 9S Mn Pb28, R= 500 N/mm<sup>2</sup>
- Conforms to DIN 71752
- **Not sold individually, please contact us for details**



CLLP Clip

**Quick assembly**



CLL Clevis



### DISCOUNTS

Qty	1+	6+	20+	50+	100+	250+
Disc.	List	-10%	-20%	-30%	-40%	On request

### Clevis

Part number	A	B	C	D	E (B13)	ØF (H9)	G	ØH	J	Static load Co (daN)	Stock*	Price each 1 to 5
CLL-5	M5 x 0,80	36	20	10	5	5	7,50	9	30	500	✓	1,68 €
CLL-6	M6 x 1,00	43	24	12	6	6	9,00	10	36	720	✓	1,80 €
CLL-8	M8 x 1,25	58	32	16	8	8	12,00	14	48	1280	✓	2,60 €
CLL-10	M10 x 1,5	72	40	20	10	10	15,00	18	60	2000	✓	4,34 €
CLL-12	M12 x 1,75	86	48	24	12	12	18,00	20	72	2880	✓	7,01 €

### Spring clip

Part number	K	L	ØM	Stock*	Price each 1 to 5
CLLP-5	29	12	5	✓	0,72 €
CLLP-6	35	14	6	✓	0,72 €
CLLP-8	47	19	8	✓	0,78 €
CLLP-10	59	23	10	✓	0,88 €
CLLP-12	71	28	12	✓	1,48 €

\*Depending on availability - Dimensions in mm

## Our other products



**BOX-TOR-MAX**  
Box set of Nitrile O-rings, 2.90 x 1.78mm to 82.14 x 3.53



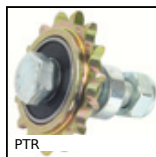
**COA-COG**  
Gas spring, Surface mounting plate for ball joint



**CHA\_D65P**  
Hinge (stainless steel), Face frame for close-fitting door



**BSB**  
Ballscrew, Support



**PTR**  
Idler chain sprocket, For standard applications



**PRS100**  
Articulated foot, Ø 100



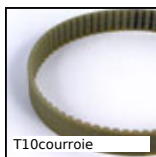
**M0**  
Worm, Non hardened steel



**PPG**  
Indexing plunger, With horizontal mounting flange



**MRA**  
Quick link, Steel



**T10courroie**  
Closed belt, T10 Steel cored polyurethane



**HFL**  
Freewheel, Needle bearing



**DOMI80**  
DOMILINE - Accessories, Plate

## Complementary products



**CLLCLLP**  
End fitting, Steel - long range