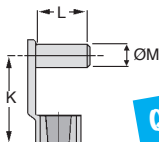


Steel

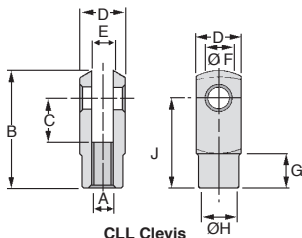
CLL CLLP

- Material: Medium hard steel 9S Mn Pb28, R= 500 N/mm²
- Conforms to DIN 71752
- **Not sold individually, please contact us for details**



CLLP Clip

Quick assembly



CLL Clevis



DISCOUNTS

Qty	1+	6+	20+	50+	100+	250+
Disc.	List	-10%	-20%	-30%	-40%	On request

Clevis

Part number	A	B	C	D	E (B13)	ØF (H9)	G	ØH	J	Static load Co (daN)	Stock*	Price each 1 to 5
CLL-5	M5 x 0,80	36	20	10	5	5	7,50	9	30	500	✓	1,68 €
CLL-6	M6 x 1,00	43	24	12	6	6	9,00	10	36	720	✓	1,80 €
CLL-8	M8 x 1,25	58	32	16	8	8	12,00	14	48	1280	✓	2,60 €
CLL-10	M10 x 1,5	72	40	20	10	10	15,00	18	60	2000	✓	4,34 €
CLL-12	M12 x 1,75	86	48	24	12	12	18,00	20	72	2880	✓	7,01 €

Spring clip

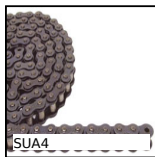
Part number	K	L	ØM	Stock*	Price each 1 to 5
CLLP-5	29	12	5	✓	0,72 €
CLLP-6	35	14	6	✓	0,72 €
CLLP-8	47	19	8	✓	0,78 €
CLLP-10	59	23	10	✓	0,88 €
CLLP-12	71	28	12	✓	1,48 €

*Depending on availability - Dimensions in mm

Our other products



Articulated foot with sheet metal base Ø80, Articulated foot



Single chain supplied by the metre, Steel



Anchoring bracket for aluminium profile, Anchor



Hexagonal nut - DIN934, Box set of steel nuts



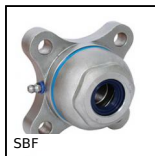
Stainless steel knurled thumb nut, Knurled



Automatic chain tensioner, With stainless steel sprocket



Internal gear, Steel 20NCD2



Open flange bearing unit for food industry, cover



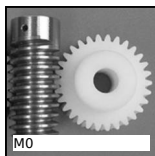
Adjustable screw stop, Steel



Flanged bronze nut, Bronze - 1 thread



Multifunction display, Mounting bracket for front mounting



Worm and wheel set, Machined plastic (delrin)

Complementary products



Clevis components, long version, Steel - long version



Clevis components, short version, Steel - short range