

With male thread

CLBT CLBTss

- **Clamp lever with male thread and flattened end according to DIN 78**

- **Materials:**

Insert: steel (class 5.8) or

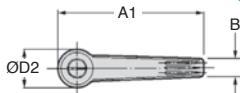
stainless steel (303)

Handle: diecast zinc,

complies with DIN 1743

- **Finish:** Blackened steel

With threaded shaft



Uses

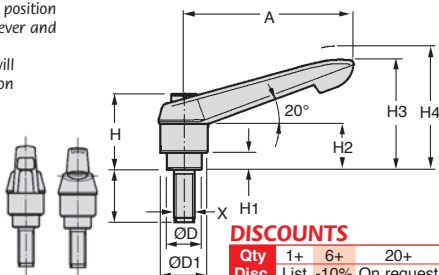
- The lever is normally in a locked position
- Raise the handle to release the lever and turn to required position
- When handle is released, lever will automatically lock in new position

Options

- Alternate lengths of threaded shaft available for orders of more than 10 pieces

Info.

- H4 = clearance height required for handle



DISCOUNTS

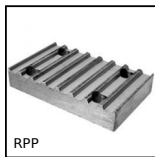
Qty	1+	6+	20+
Disc.	List	-10%	On request

Part number		Threaded rod X	H1	L		ØD	ØD1	ØD2
Steel	Stainless			Steel	Stainless			
CLB01T5	CLB01T5SS	M5	4,0	50	25	10,0	13,0	14,5
CLB01T6	CLB01T6SS	M6	4,0	50	50	10,0	13,0	14,5
CLB02T8	CLB02T8SS	M8	6,5	60	60	13,5	18,0	19,5
CLB02T10	CLB02T10SS	M10	6,5	60	60	13,5	18,0	19,5
CLB03T10	CLB03T10SS	M10	10,0	60	60	16,0	21,5	23,0
CLB04T10	-	M10	10,0	90	-	19,0	25,5	27,5
CLB04T12	CLB04T12SS	M12	10,0	90	60	19,0	25,5	27,5
CLB05T12	-	M12	12,0	90	-	23,0	30,0	32,5
CLB05T16	CLB05T16SS	M16	12,0	90	60	23,0	30,0	32,5

Part number		H				A				N° of teeth	Stock*		Price each 1 to 5	
Steel	Stainless	H	H2	H3	H4	A	A1	B	Steel		Sts	Steel	Stainless	
CLB01T5	CLB01T5SS	24,5	15,0	30,0	33,5	40	47,0	7,5	16	✓	✓	13,26 €	17,02 €	
CLB01T6	CLB01T6SS	24,5	15,0	30,0	33,5	40	47,0	7,5	16	✓	✓	13,26 €	18,30 €	
CLB02T8	CLB02T8SS	28,5	17,5	41,5	45,5	65	75,0	9,5	20	✓	✓	16,40 €	22,71 €	
CLB02T10	CLB02T10SS	28,5	17,5	41,5	45,5	65	75,0	9,5	20	✓	✓	16,40 €	22,63 €	
CLB03T10	CLB03T10SS	37,0	24,0	53,5	58,0	80	91,5	11,0	22	✓	✓	18,15 €	25,85 €	
CLB04T10	-	43,0	26,0	61,0	66,0	95	109,0	13,0	24	✓	-	21,68 €	-	
CLB04T12	CLB04T12SS	43,0	26,0	61,0	66,0	95	109,0	13,0	24	✓	✓	21,68 €	33,25 €	
CLB05T12	-	49,0	33,0	72,0	77,0	110	126,0	15,5	26	✓	-	27,29 €	-	
CLB05T16	CLB05T16SS	49,0	33,0	72,0	77,0	110	126,0	15,5	26	✓	-	27,29 €	42,42 €	

*Depending on availability - Dimensions in mm

Our other products



RPP

Connecting plate for RPP type timing belts, RPP8



GLB

Small 6 lobe threaded handle - female, Technopolymer - Stainless steel



KB_UU

Closed linear precision bearing, Precision - steel



EKONSL

Silicone conical elasto buffer, Female mounting



CHAsb63

Hinge without pin, Polymer pin hinge



DOMI120

Accessories, Fixing kit



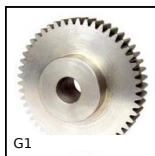
ESCON

Speed controller 5A, 5 A



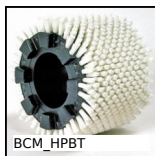
FF50

Offset spur gear reducer, from 111 to 425 Nm



G1

Steel spur gear, Steel 20NCD2



BCM_HPBT

Modular cylindrical brush, PBT polyester bristles



ZG0

Plastic spur gear, Machined plastic (delrin)



H1

Crossed helical gear crossed axis at 90°, Steel 20NCD2

Complementary products



PCLAT

Technopolymer clamping lever - male, Plastic



CLASS

Stainless steel indexing handle - male, Stainless steel



CLB_M

Die cast zinc clamping lever - female, Zamak



CLASS

Stainless steel indexing handle - female, Stainless steel