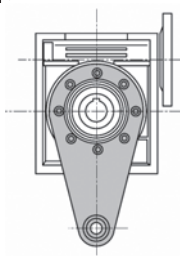
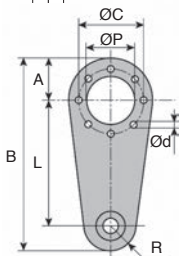
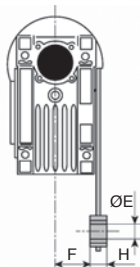
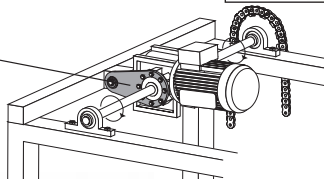
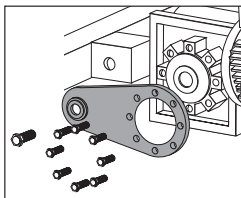


# Reaction arm

Stock

## CHM<sub>BR</sub> For CHM and CHMR gear gearboxes

- Mounts directly on the output side of the CHM and CHMR gear gearboxes
- The mounting point of the reaction arm is equipped with an anti-vibration bearing



### DISCOUNTS <sup>A</sup>

Qty	1+	6+	20+	40+
Disc.	List	-15%	-20%	On request

### DISCOUNTS <sup>B</sup>

Qty	1+	2+	6+	15+
Disc.	List	-5%	-15%	On request

Part number	L	R	F	H	ØE	A	B	ØC	ØD	ØP	Weight (kg)	Stock	Price each 1 to 5
CHM30-BR	85	15	24,0	14	8	38	138	65	7	55	0,18	✓	<sup>A</sup> 9,00 €
CHM40-BR	100	18	31,5	14	10	44	162	75	7	60	0,24	✓	<sup>A</sup> 9,56 €
CHM50-BR	100	18	38,5	14	10	50	168	85	9	70	0,27	✓	<sup>A</sup> 10,45 €
CHM63-BR	150	18	49,0	14	10	55	223	95	9	80	0,57	✓	<sup>A</sup> 13,35 €
CHM75-BR	200	30	47,5	25	20	70	300	115	9	95	1,10	✓	<sup>B</sup> 20,03 €
CHM90-BR	200	30	57,5	25	20	80	310	130	11	110	1,26	✓	<sup>B</sup> 28,49 €
CHM110-BR	250	35	62,0	30	25	100	385	165	11	130	1,92	-	<sup>B</sup> 37,90 €

\*Depending on availability - Dimensions in mm

## Our other products



S2B  
Short linear bearing housing, Closed - Slim



YG2  
HEAVY DUTY spur gear, Steel 35NCD6



BOX-TOR-H  
Box set of Nitrile O-rings in nitrile, 3.00 x 2.00mm to 45.20 x 4.00



LVT  
Miniature motorised actuator 2A, 2 amperes



H3  
Crossed helical gear crossed axis at 90°, Steel 20NCD2



LFM  
Steel leadscrew, Medium carbon steel - 1 thread



RFK58C  
Hypoid gearbox - Stainless steel, up to 500 Nm



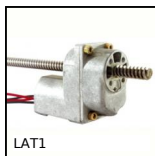
HFL  
One way needle bearing, Needle bearing



BLHB60  
Right angled gearbox, bored shafts, up to 70 Nm



MSP19  
Masterplate® glueable insert Ø19, Cylindrical with



LAT1  
1A motorised linear actuator, 1 ampere



JCSs  
Single stainless steel universal joint, Low duty

## Complementary products



CHMR30  
Worm and wheel gear reducer, up to 28 Nm



CHM30  
Worm and wheel gear reducer, up to 28 Nm