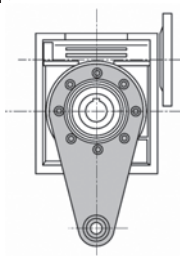
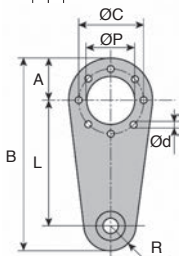
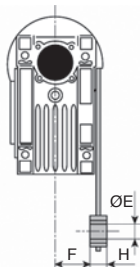
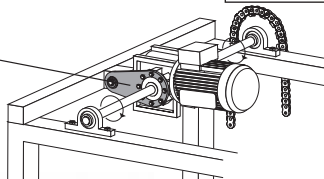
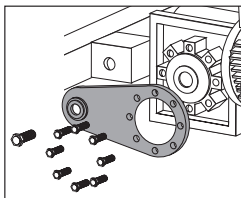


Reaction arm



CHM_{BR} For CHM and CHMR gear gearboxes

- Mounts directly on the output side of the CHM and CHMR gear gearboxes
- The mounting point of the reaction arm is equipped with an anti-vibration bearing



DISCOUNTS **A**

Qty	1+	6+	20+	40+
Disc.	List	-15%	-20%	On request

DISCOUNTS **B**

Qty	1+	2+	6+	15+
Disc.	List	-5%	-15%	On request

Part number	L	R	F	H	ØE	A	B	ØC	ØD	ØP	Weight (kg)	Stock	Price each 1 to 5
CHM30-BR	85	15	24,0	14	8	38	138	65	7	55	0,18	✓	A 9,00 €
CHM40-BR	100	18	31,5	14	10	44	162	75	7	60	0,24	✓	A 9,56 €
CHM50-BR	100	18	38,5	14	10	50	168	85	9	70	0,27	✓	A 10,45 €
CHM63-BR	150	18	49,0	14	10	55	223	95	9	80	0,57	✓	A 13,35 €
CHM75-BR	200	30	47,5	25	20	70	300	115	9	95	1,10	✓	B 20,03 €
CHM90-BR	200	30	57,5	25	20	80	310	130	11	110	1,26	✓	B 28,49 €
CHM110-BR	250	35	62,0	30	25	100	385	165	11	130	1,92	-	B 37,90 €

*Depending on availability - Dimensions in mm

Our other products



DOMI30

Domino 30 adjustable slide, Slide DOMILINE 30



COA-COG

Surface mounting plate, Surface mounting plate for ball joint



WJUM20

Drylin® W bearing block, Slide



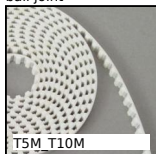
ACLEPP

Right angled bracket for aluminium profile, 2 holes



VDSQCB

Sliding lock adjustment system, Blocking wedge



TSM T10M

T type timing belt per metre, T5 Steel cored polyurethane



CFES

Eccentric cam follower, Eccentric



PSG08HC

Skive hobbed spur gears - precision range, Case hardened steel 20NCD2



HRV

V-rail guidance Simple Select® system, Rail with carriage



SLHVlok

Horizontal toggle clamp, Horizontal toggle clamp / vertical foot



SSG0

Stainless steel spur gear, Stainless steel 304L



SVG

Adjustable latch clamp with strike plate, Stroke from 118mm to 130,5mm

Complementary products



CHMR30

Worm and wheel gear reducer, up to 28 Nm



CHM30

Worm and wheel gear reducer, up to 28 Nm