

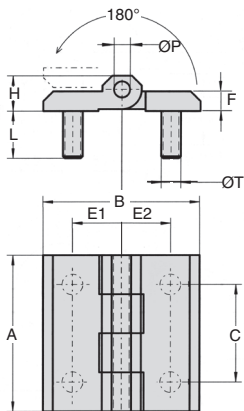
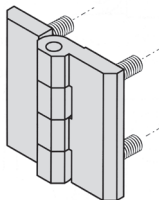
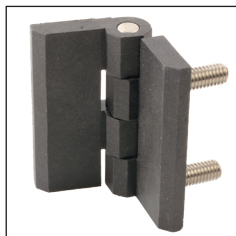
# Molded polyamide face-mounted hinge ★★★ **Stock**

## CHAUPA With anchors

- Universal hinge for plug door
- 180° opening
- Nut fixing
- Molded hinge
- **Materials:**
  - Black polyamide
  - Stainless steel molded anchors
  - Stainless steel pin

### Advantages

- Beautiful finish



### DISCOUNTS

Qty	1+	6+	20+	50+
Disc.	List	-5%	-10%	On request

Part number	A	B	C	E1	E2	H	F	ØT	ØP	Stock*	Price each 1 à 5
<b>Square hinge</b>											
CHA1056-U4PA	40	40	25	12,5	12,5	9	5	M5	12	-	13,91 €
CHA1056-U8PA	50	50	30	15	15	11,5	6	M6	15	✓	15,24 €

\*Depending on availability - Dimensions in mm

## Our other products



BLHT30

Right angled gearbox,  
from 1.65 to 4.40 Nm



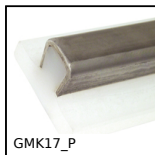
KB\_WW

Closed linear  
precision bearing,  
Economy range



FF20

Offset spur gear  
reducer, from 5.80 to  
23 Nm



GMK17\_P

Flat Guide, Flat guide  
for conical profile



DBL821

Idler for slat top  
chain, Range 821



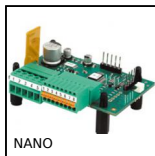
M0

Worm and wheel set,  
Non hardened steel



HLUT

Spoked handwheel  
with handle,  
Aluminium



NANO

Speed controller 3A, 3  
A



GLB

Small 6 lobe female  
handle,



FBL4004\_K7

Brush strip per meter  
PA6 fibres Ø0.3 to



HTD14M\_85

HTD Heavy duty  
timing pulley, HTD14



RCX-6

Spherical tilt washer -  
DIN6319, concave

## Complementary products



CHAu

Screwed hinge, 270°



CHAuss

Screwed hinge, 270°