

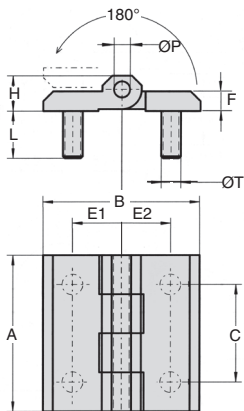
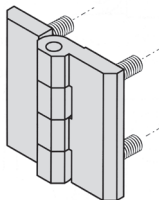
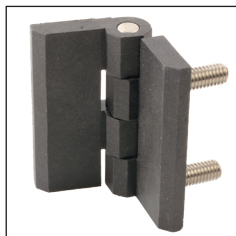
Molded polyamide face-mounted hinge ★★★ **Stock**

CHAUPA With anchors

- Universal hinge for plug door
- 180° opening
- Nut fixing
- Molded hinge
- **Materials:**
 - Black polyamide
 - Stainless steel molded anchors
 - Stainless steel pin

Advantages

- Beautiful finish



DISCOUNTS

Qty	1+	6+	20+	50+
Disc.	List	-5%	-10%	On request

Part number	A	B	C	E1	E2	H	F	ØT	ØP	Stock*	Price each 1 à 5
Square hinge											
CHA1056-U4PA	40	40	25	12,5	12,5	9	5	M5	12	-	13,91 €
CHA1056-U8PA	50	50	30	15	15	11,5	6	M6	15	✓	15,24 €

*Depending on availability - Dimensions in mm

Our other products



SVR20

Screwjack with travelling nut, with moving nut



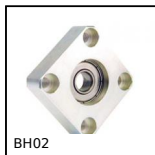
DOMI50

Accessories, Fixing kit



F7-I

Multifunction display, With internal sensor



BH02

Single housed bearing assembly, Bearing secured with circlips



SLB5

Stainless steel indexing plunger, Stainless steel



PAMF80EB

Articulated foot with sheet metal base Ø80, Articulated foot



ACLALF

Adjustable foot for aluminium profile, Ideal for workstations



PENC

Recessed handle, clip-in



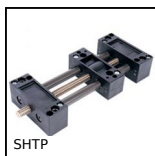
SLBW

Indexing plunger, weldable, Weldable - Steel



SLVHlok

Vertical toggle clamp, Vertical toggle clamp / horizontal foot



SHTP

Drylin® Linear table, Economy range



GE32

Sprung toggle latch with connecting link, Standard

Complementary products



CHAu

Screwed hinge, 270°



CHAUss

Screwed hinge, 270°