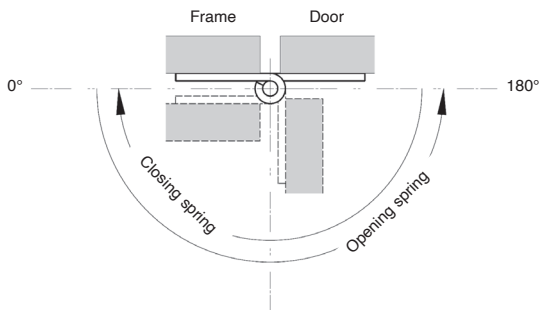


Spring hinges

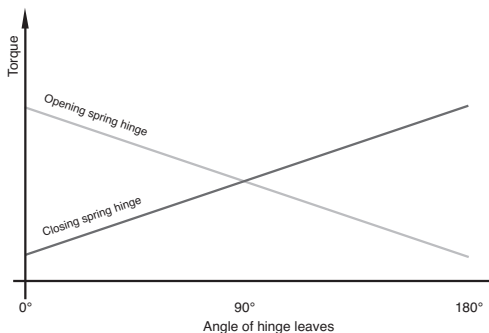
CHAR

Information

The way a spring hinge opens depends on the type of spring



Spring hinge torque depends on the angle



M: hinge torque at various positions

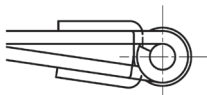
$M(0^\circ)$: torque when hinge leaves are parallel

$M(90^\circ)$: torque when leaves are at 90°

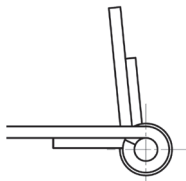
$M(180^\circ)$: torque when leaves are at 180°

Spring hinges are delivered as shown

When delivered, hinges will be in the following position:

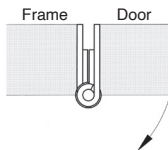


Closing spring hinge

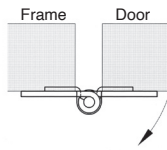


Opening spring hinge

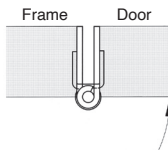
Mounting and opening direction



Opening spring hinge

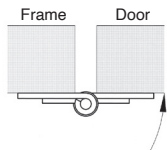


Closing spring hinge



Closing spring hinge

Concealed mounting



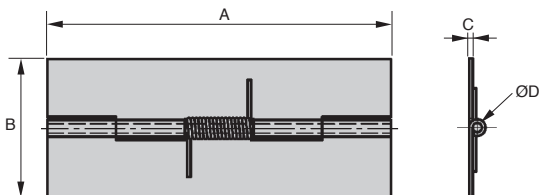
Opening spring hinge

Surface mounting

The arrow indicates the direction of rotation of the hinge due to the effect of the spring

- Hinge with opening spring
- Sheet metal with rolled knot
- Materials:
 - CHAR hinges:** steel, stainless steel spring
 - CHAR/SS hinges:** stainless steel 304, stainless steel spring
- Finish: natural
- Spring torque
 - M(0°): 0.12 Nm
 - M(90°): 0.095 Nm
 - M(180°): 0.07 Nm

Available
in steel or
stainless
steel



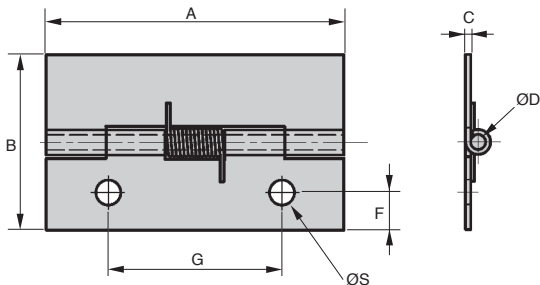
DISCOUNTS

Qty	1+	6+	20+	50+
Disc.	List	-5%	-10%	On request

Part number	A	B	C	ØD	Spring	Weight (g)	Stock*	Price each 1 to 5
Steel								
CHAR7530	75	30	0,8	2	Opening	17	-	12,95 €
Stainless steel								
CHAR7530/SS	75	30	0,8	2	Opening	17	✓	23,13 €

*Depending on availability - Dimensions in mm

- Hinge with opening or closing spring
- Sheet metal with rolled knot
- Materials:
 - Hinges: steel
 - Spring: stainless steel 304
 - Finish: natural
- Opening spring torque:
 - $M(0^\circ)$: 0.09 Nm
 - $M(90^\circ)$: 0.07 Nm
 - $M(180^\circ)$: 0.045 Nm
- Closing spring torque:
 - $M(0^\circ)$: 0.045 Nm
 - $M(90^\circ)$: 0.07 Nm
 - $M(180^\circ)$: 0.09 Nm



DISCOUNTS

Qty	1+	6+	20+	50+
Disc.	List	-5%	-10%	On request

Part number	A	B	C	ØD	F	G	ØS	Spring	Weight (g)	Stock*	Price each 1 to 5
CHAR6035	60	35	1	3	7,5	35	5	Opening	22	✓	17,54 €
CHAR6035-F	60	35	1	3	7,5	35	5	Closing	22	-	13,07 €

*Depending on availability - Dimensions in mm

CHAR

Automatic return

- Hinge with opening spring

- Sheet metal with rolled knot

- Materials:

CHAR hinges: steel, spring :stainless steel

CHAR/SS hinges: stainless steel 304: spring stainless steel

- Finish: natural

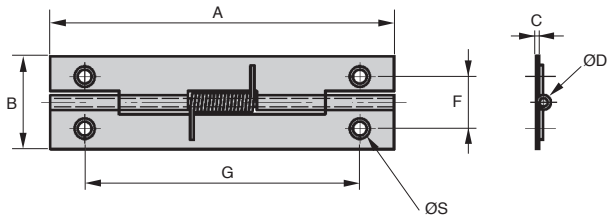
- Spring torque

M(0°): 0.12 Nm

M(90°): 0.09 Nm

M(180°): 0.06 Nm

Available
in steel or
stainless
steel



DISCOUNTS

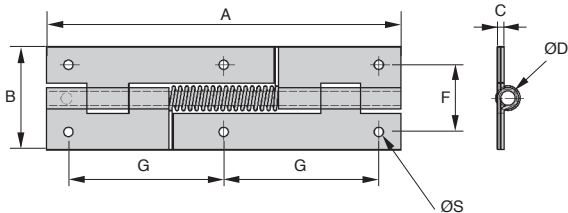
Qty	1+	6+	20+	50+
Disc.	List	-5%	-10%	On request

Part number	A	B	C	ØD	F	G	ØS	Spring	Weight (g)	Price each	
										Stock*	1 to 5
Steel											
CHAR7520	75	20	0,8	1,8	11,2	60	2	Opening	11,5	✓	9,26 €
Stainless steel											
CHAR7520/SS	75	20	0,8	1,8	11,2	60	2	Opening	11,5	✓	12,83 €

*Depending on availability - Dimensions in mm

- Hinge with opening or closing spring
- Sheet metal with rolled knot
- Materials:
 - CHAR hinges:** steel, spring :stainless steel
 - CHAR/SS:** Hinges: stainless steel 304 , spring : stainless steel
- Finish: natural
- Opening spring torque:
 - M(0°) : 0.9 Nm
 - M(90°) : 0.86 Nm
 - M(180°) : 0.6 Nm
- Closing spring torque:
 - M(0°) : 0.6 Nm
 - M(90°) : 0.86 Nm
 - M(180°) : 0.9 Nm

Available
in steel or
stainless
steel



DISCOUNTS

Qty	1+	6+	20+	50+
Disc. List	-5%	-10%	On request	

Part number	A	B	C	ØD	F	G	ØS	Spring	Weight (g)	Price each 1 to 5	
Steel											
CHAR16046	160	46	3	6,5	30	70	4,2	Opening	208	✓ 27,66 €	
CHAR16046-F	160	46	3	6,5	30	70	4,2	Closing	208	✓ 27,66 €	
Stainless steel											
CHAR16046/SS	160	46	3	6,5	30	70	4,2	Opening	208	✓ 32,60 €	

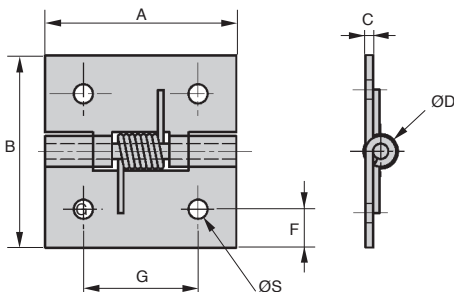
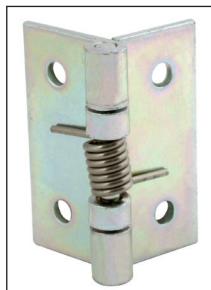
*Depending on availability - Dimensions in mm

CHAR

Automatic return

- Hinge with opening or closing spring
- Sheet metal with rolled knot
- Materials:
 - CHAR hinge:** plated steel, spring :stainless steel
 - CHAR/SS hinge:** natural stainless steel 304: spring stainless steel
- Opening spring torque
 - M(0°): 1.5 Nm
 - M(90°): 1.1 Nm
 - M(180°): 0.65 Nm
- Closing spring torque
 - M(0°): 0.65 Nm
 - M(90°): 1.1 Nm
 - M(180°): 1.5 Nm

Available
in steel or
stainless
steel



DISCOUNTS

Qty	1+	6+	20+	50+
Disc.	List	-5%	-10%	On request

Part number	A	B	C	ØD	F	G	ØS	Spring	Weight (g)	Price each
Steel										
CHAR5050/Z	50	50	2	4	9	30	5	Opening	50	✓ 10,31 €
CHAR5050-F/Z	50	50	2	4	9	30	5	Closing	50	✓ 10,79 €
Stainless steel										
CHAR5050/SS	50	50	2	4	10	30	5	Opening	50	✓ 16,11 €
CHAR5050-F/SS	50	50	2	4	10	30	5	Closing	50	✓ 18,53 €

*Depending on availability - Dimensions in mm

- **Hinge with concealed mechanism**
- Automatic opening or closing of a door or panel
- Resists humidity
- Elegant design
- Low play
- Max opening angle 180°
- Working temp range: -20° to 80 °C
- Fixed using DIN912 screws (not supplied)
- Materials:

Black or natural finish aluminium

Centre: PA6.6 polyamide

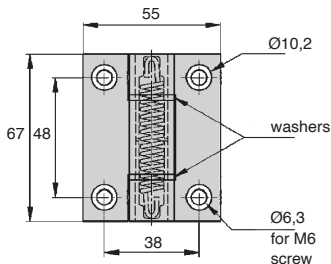
Washer: POM

Spring: steel

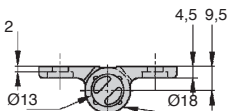
- 0.35 Nm version is guaranteed for 30,000 operations
- 1.30 Nm version is guaranteed for 10,000 operations

Applications

- Opening doors or covers
- Industrial machines
- Metallic furniture
- Medical equipment



Available in black



DISCOUNTS

Qty	1+	6+	20+	50+
Disc.	List	-5%	-10%	On request

Part number	Torque (Nm)			Spring	Colour	Weight (g)	Stock*	Price each 1 to 5
	at 0°	at 90°	at 180°					
CHAR6755-L-AG	0,35	0,24	0,12	opening	natural	110	✓	28,75 €
CHAR6755-L-AN	0,35	0,24	0,12	opening	black	110	✓	28,75 €
CHAR6755-H-AG	1,3	1,1	0,9	opening	natural	110	✓	31,25 €
CHAR6755-H-AN	1,3	1,1	0,9	opening	black	110	-	31,25 €
CHAR6755-H-AG-F	1,3	1,1	0,9	closing	natural	110	✓	36,62 €
CHAR6755-H-AN-F	1,3	1,1	0,9	closing	black	110	-	36,62 €

*Depending on availability - Dimensions in mm

Stainless steel compact spring hinge

CHARCAV

Very easy to install

- Spring-loaded hinges with stopper to lock the hinges in the open position for easy assembly

- 270° opening angle

- Material

304 stainless steel, stainless steel spring

- Spring torque

Opening spring:

M(0°): 1.6 Nm

M(90°): 1.2 Nm

M(180°): 0.84 Nm

Closing spring:

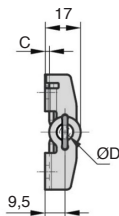
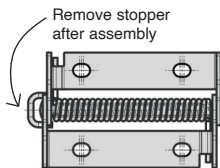
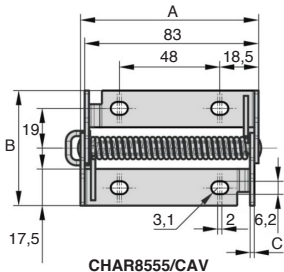
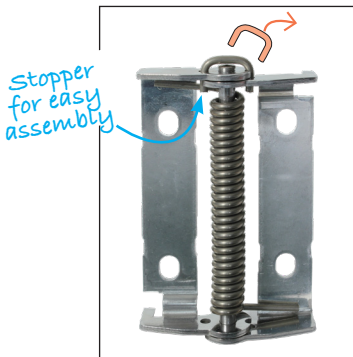
M(0°): 0.75 Nm

M(90°): 1.2 Nm

M(180°): 1.65 Nm

Info

- Spring hinge opens or closes delivered flat



DISCOUNTS

Qty	1+	6+	20+	50+
Disc.	List	-5%	-10%	On request

Part number	A	B	C	ØD	Type	Weight (g)	Stock*	Price each 1 to 5
CHAR8555/CAV	85	55	2	5	opening	107	-	23,33 €
CHAR8555-F/CAV	85	55	2	5	closing	107	-	23,33 €

*Depending on availability - Dimensions in mm

Our other products



ZBconique

Machined plastic
bevel gear , 1:1



RFK28C

Hypoid gearbox -
Stainless steel, up to
130 Nm



ACM_TRI

Manual bonnet
fastener, Black rubber
fastener



DCA

Suction cup, 1.5
bellows, natural
rubber



D19 D29

Compression springs
in metre length steel,
by the metre



BPPL

Mini plain bearing ball
transfer unit, For
countersinking



WING

Manually tightened
wing nut, Stainless
steel DIN 314/315



ACLEPP

Right angled bracket
for aluminium profile,
8 holes



RBGtc

Swivel castor with
central hole, Steel -
grey rubber - with



PSG1HC

Skive hobbed spur
gears - precision
range, Case hardened



GP

Spring loaded toggle
latch, Standard



PSG25

Spur gear - precision
range, Pre-hardened
Steel 35NCD6

Complementary products



CHAR

Spring hinge, screwed



CHAR5050_Z

Spring hinge, screwed



CHARcav

Spring hinge, to install