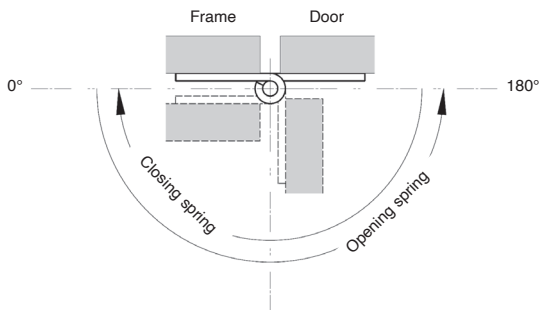


# Spring hinges

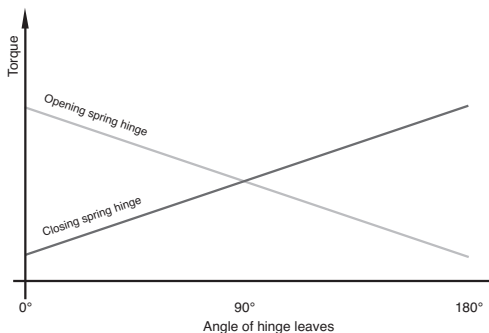
CHAR

Information

**The way a spring hinge opens depends on the type of spring**



**Spring hinge torque depends on the angle**



*M*: hinge torque at various positions

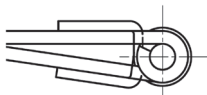
*M*(0°): torque when hinge leaves are parallel

*M*(90°): torque when leaves are at 90°

*M*(180°): torque when leaves are at 180°

### Spring hinges are delivered as shown

When delivered, hinges will be in the following position:

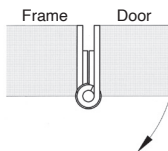


Closing spring hinge

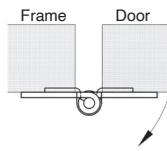


Opening spring hinge

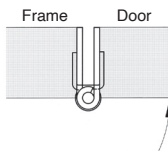
### Mounting and opening direction



Opening spring hinge

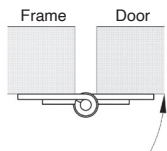


Closing spring hinge



Closing spring hinge

Concealed mounting



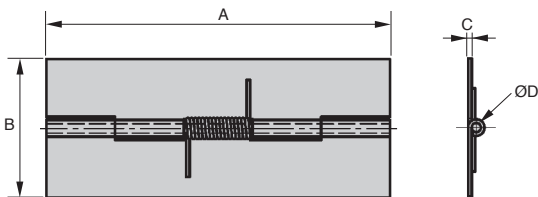
Opening spring hinge

Surface mounting

The arrow indicates the direction of rotation of the hinge due to the effect of the spring

- Hinge with opening spring
- Sheet metal with rolled knot
- Materials:
  - CHAR hinges:** steel, stainless steel spring
  - CHAR/SS hinges:** stainless steel 304, stainless steel spring
- Finish: natural
- Spring torque
  - M(0°): 0.12 Nm
  - M(90°): 0.095 Nm
  - M(180°): 0.07 Nm

Available  
in steel or  
stainless  
steel



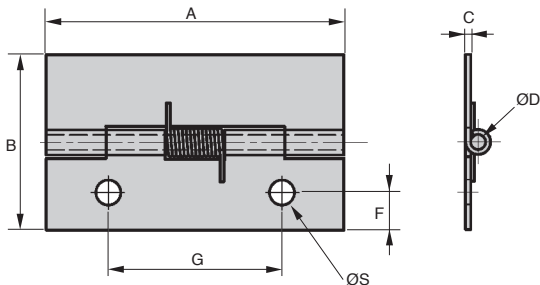
### DISCOUNTS

Qty	1+	6+	20+	50+
Disc.	List	-5%	-10%	On request

Part number	A	B	C	ØD	Spring	Weight (g)	Stock*	Price each 1 to 5
<b>Steel</b>								
CHAR7530	75	30	0,8	2	Opening	17	-	12,95 €
<b>Stainless steel</b>								
CHAR7530/SS	75	30	0,8	2	Opening	17	✓	23,13 €

\*Depending on availability - Dimensions in mm

- Hinge with opening or closing spring
- Sheet metal with rolled knot
- Materials:
  - Hinges: steel
  - Spring: stainless steel 304
  - Finish: natural
- Opening spring torque:
  - $M(0^\circ)$ : 0.09 Nm
  - $M(90^\circ)$ : 0.07 Nm
  - $M(180^\circ)$ : 0.045 Nm
- Closing spring torque:
  - $M(0^\circ)$ : 0.045 Nm
  - $M(90^\circ)$ : 0.07 Nm
  - $M(180^\circ)$ : 0.09 Nm



## DISCOUNTS

Qty	1+	6+	20+	50+
Disc.	List	-5%	-10%	On request

Part number	A	B	C	ØD	F	G	ØS	Spring	Weight (g)	Stock*	Price each 1 to 5
CHAR6035	60	35	1	3	7,5	35	5	Opening	22	✓	17,54 €
CHAR6035-F	60	35	1	3	7,5	35	5	Closing	22	-	13,07 €

\*Depending on availability - Dimensions in mm

## CHAR

## Automatic return

**- Hinge with opening spring**

- Sheet metal with rolled knot

- Materials:

**CHAR hinges:** steel, spring :stainless steel

**CHAR/SS hinges:** stainless steel 304: spring

stainless steel

- Finish: natural

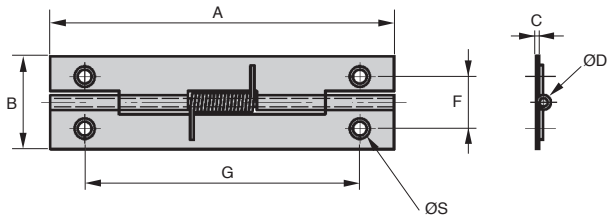
- Spring torque

M(0°): 0.12 Nm

M(90°): 0.09 Nm

M(180°): 0.06 Nm

Available  
in steel or  
stainless  
steel



### DISCOUNTS

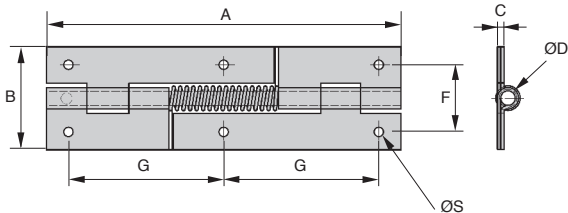
<b>Qty</b>	1+	6+	20+	50+
<b>Disc.</b>	List	-5%	-10%	On request

Part number	A	B	C	ØD	F	G	ØS	Spring	Weight (g)	Price each 1 to 5
<b>Steel</b>										
CHAR7520	75	20	0,8	1,8	11,2	60	2	Opening	11,5	✓ 9,26 €
<b>Stainless steel</b>										
CHAR7520/SS	75	20	0,8	1,8	11,2	60	2	Opening	11,5	✓ 12,83 €

\*Depending on availability - Dimensions in mm

- Hinge with opening or closing spring
- Sheet metal with rolled knot
- Materials:
  - CHAR hinges:** steel, spring :stainless steel
  - CHAR/SS:** Hinges: stainless steel 304 , spring : stainless steel
- Finish: natural
- Opening spring torque:
  - M(0°) : 0.9 Nm
  - M(90°) : 0.86 Nm
  - M(180°) : 0.6 Nm
- Closing spring torque:
  - M(0°) : 0.6 Nm
  - M(90°) : 0.86 Nm
  - M(180°) : 0.9 Nm

Available  
in steel or  
stainless  
steel



### DISCOUNTS

Qty	1+	6+	20+	50+
Disc. List	-5%	-10%	On request	

Part number	A	B	C	ØD	F	G	ØS	Spring	Weight (g)	Stock*	Price each 1 to 5
<b>Steel</b>											
CHAR16046	160	46	3	6,5	30	70	4,2	Opening	208	✓	27,66 €
CHAR16046-F	160	46	3	6,5	30	70	4,2	Closing	208	✓	27,66 €
<b>Stainless steel</b>											
CHAR16046/SS	160	46	3	6,5	30	70	4,2	Opening	208	✓	32,60 €

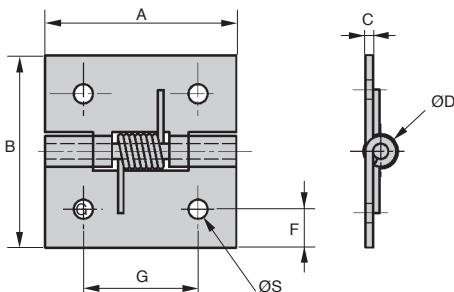
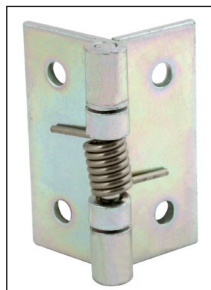
\*Depending on availability - Dimensions in mm

## CHAR

## Automatic return

- Hinge with opening or closing spring
- Sheet metal with rolled knot
- Materials:
  - CHAR hinge:** plated steel, spring :stainless steel
  - CHAR/SS hinge:** natural stainless steel 304: spring stainless steel
- Opening spring torque
  - M(0°): 1.5 Nm
  - M(90°): 1.1 Nm
  - M(180°): 0.65 Nm
- Closing spring torque
  - M(0°): 0.65 Nm
  - M(90°): 1.1 Nm
  - M(180°): 1.5 Nm

Available  
in steel or  
stainless  
steel



### DISCOUNTS

Qty	1+	6+	20+	50+
Disc.	List	-5%	-10%	On request

Part number	A	B	C	ØD	F	G	ØS	Spring	Weight (g)	Price each
<b>Steel</b>										
CHAR5050/Z	50	50	2	4	9	30	5	Opening	50	✓ 10,31 €
CHAR5050-F/Z	50	50	2	4	9	30	5	Closing	50	✓ 10,79 €
<b>Stainless steel</b>										
CHAR5050/SS	50	50	2	4	10	30	5	Opening	50	✓ 16,11 €
CHAR5050-F/SS	50	50	2	4	10	30	5	Closing	50	✓ 18,53 €

\*Depending on availability - Dimensions in mm

- **Hinge with concealed mechanism**
- Automatic opening or closing of a door or panel
- Resists humidity
- Elegant design
- Low play
- Max opening angle 180°
- Working temp range: -20° to 80 °C
- Fixed using DIN912 screws (not supplied)
- Materials:

Black or natural finish aluminium

Centre: PA6.6 polyamide

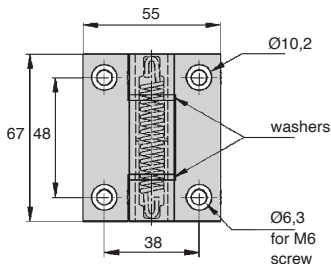
Washer: POM

Spring: steel

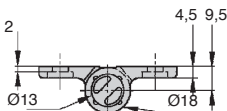
- 0.35 Nm version is guaranteed for 30,000 operations
- 1.30 Nm version is guaranteed for 10,000 operations

### Applications

- Opening doors or covers
- Industrial machines
- Metallic furniture
- Medical equipment



Available in black



### DISCOUNTS

Qty	1+	6+	20+	50+
Disc.	List	-5%	-10%	On request

Part number	Torque (Nm)				Spring	Colour	Weight (g)	Stock*	Price each 1 to 5
	at 0°	at 90°	at 180°						
CHAR6755-L-AG	0,35	0,24	0,12	opening	natural	110	✓	28,75 €	
CHAR6755-L-AN	0,35	0,24	0,12	opening	black	110	✓	28,75 €	
CHAR6755-H-AG	1,3	1,1	0,9	opening	natural	110	✓	31,25 €	
CHAR6755-H-AN	1,3	1,1	0,9	opening	black	110	-	31,25 €	
CHAR6755-H-AG-F	1,3	1,1	0,9	closing	natural	110	✓	36,62 €	
CHAR6755-H-AN-F	1,3	1,1	0,9	closing	black	110	-	36,62 €	

\*Depending on availability - Dimensions in mm



- Spring-loaded hinges with stopper to lock the hinges in the open position for easy assembly

- 270° opening angle

- Material

304 stainless steel, stainless steel spring

- Spring torque

Opening spring:

M(0°): 1.6 Nm

M(90°): 1.2 Nm

M(180°): 0.84 Nm

Closing spring:

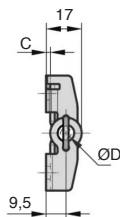
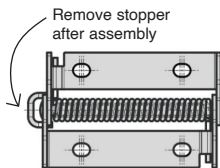
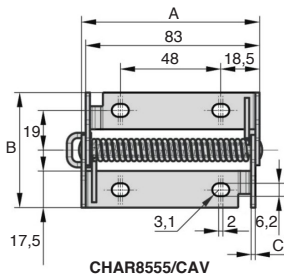
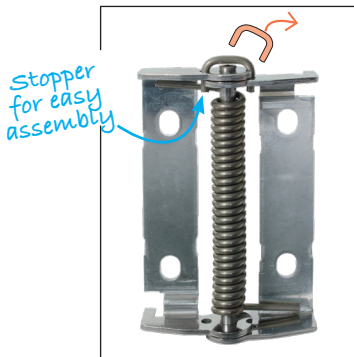
M(0°): 0.75 Nm

M(90°): 1.2 Nm

M(180°): 1.65 Nm

### Info

- Spring hinge opens or closes delivered flat



### DISCOUNTS

Qty	1+	6+	20+	50+
Disc.	List	-5%	-10%	On request

Part number	A	B	C	ØD	Type	Weight (g)	Stock*	Price each 1 to 5
CHAR8555/CAV	85	55	2	5	opening	107	-	23,33 €
CHAR8555-F/CAV	85	55	2	5	closing	107	-	23,33 €

\*Depending on availability - Dimensions in mm

## Our other products



Q1

Self-aligning radial ball bearing, Steel



PRES

Manual workbench press accessory for PRES-3HR end PRES-4HR, Micromet...



PITA

Locking bolt, with T handle



OP7

Mechanical digital position indicator, 5 numbers



CHMR110

Worm and wheel gear reducer, up to 980 Nm



PW\_PWG05

Wheel - precision range, Bronze



PARF110

Pressed steel base rigid foot, Swivelling Ø110



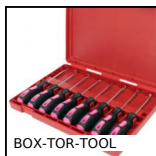
G0

Steel spur gear, Steel 20NCD2



BOX-INS-W

Box set of self tapping inserts, Boxed set -



BOX-TOR-TOOL

Box set of tool for Nitrile O-rings,



G01

Single universal joint, Normal duty



PGMSS

Stainless steel pull handle, Stainless steel

## Complementary products



CHAR7520

Spring hinge, screwed



CHAR16046

Spring hinge, screwed



CHARcav

Spring hinge, to install