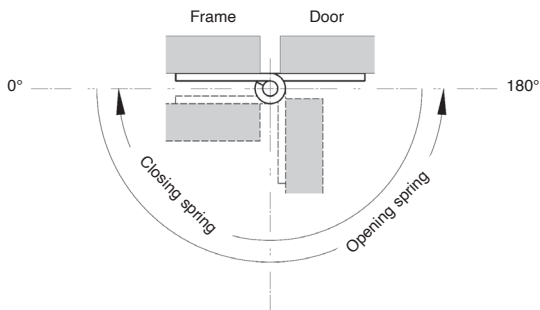


# Spring hinges

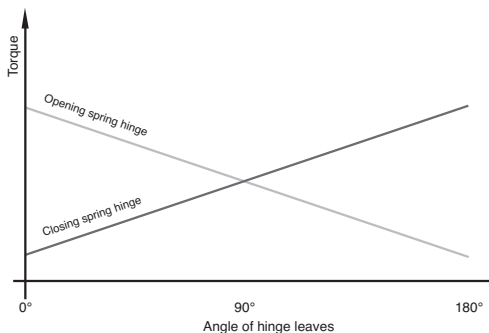
CHAR

Information

**The way a spring hinge opens depends on the type of spring**



**Spring hinge torque depends on the angle**



*M*: hinge torque at various positions

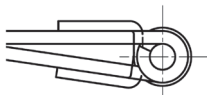
$M(0^\circ)$ : torque when hinge leaves are parallel

$M(90^\circ)$ : torque when leaves are at  $90^\circ$

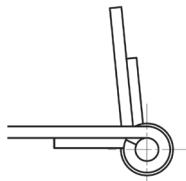
$M(180^\circ)$ : torque when leaves are at  $180^\circ$

### Spring hinges are delivered as shown

When delivered, hinges will be in the following position:

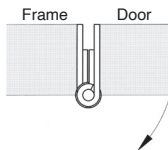


Closing spring hinge

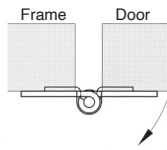


Opening spring hinge

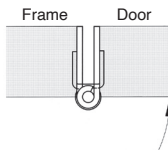
### Mounting and opening direction



Opening spring hinge

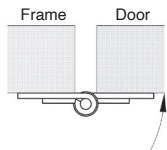


Closing spring hinge



Closing spring hinge

Concealed mounting



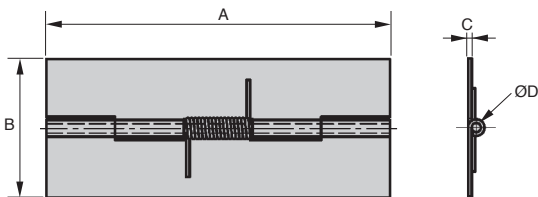
Opening spring hinge

Surface mounting

The arrow indicates the direction of rotation of the hinge due to the effect of the spring

- Hinge with opening spring
- Sheet metal with rolled knot
- Materials:
  - CHAR hinges:** steel, stainless steel spring
  - CHAR/SS hinges:** stainless steel 304, stainless steel spring
- Finish: natural
- Spring torque
  - M(0°): 0.12 Nm
  - M(90°): 0.095 Nm
  - M(180°): 0.07 Nm

Available  
in steel or  
stainless  
steel



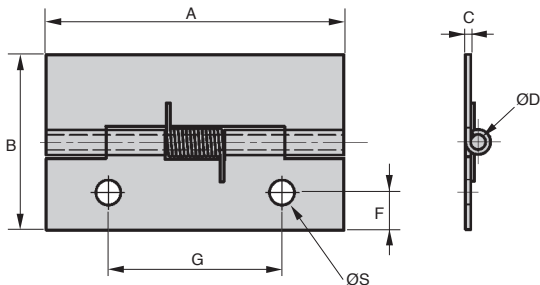
### DISCOUNTS

Qty	1+	6+	20+	50+
Disc.	List	-5%	-10%	On request

Part number	A	B	C	ØD	Spring	Weight (g)	Stock*	Price each 1 to 5
<b>Steel</b>								
CHAR7530	75	30	0,8	2	Opening	17	-	12,95 €
<b>Stainless steel</b>								
CHAR7530/SS	75	30	0,8	2	Opening	17	✓	23,13 €

\*Depending on availability - Dimensions in mm

- Hinge with opening or closing spring
- Sheet metal with rolled knot
- Materials:
  - Hinges: steel
  - Spring: stainless steel 304
  - Finish: natural
- Opening spring torque:
  - $M(0^\circ)$ : 0.09 Nm
  - $M(90^\circ)$ : 0.07 Nm
  - $M(180^\circ)$ : 0.045 Nm
- Closing spring torque:
  - $M(0^\circ)$ : 0.045 Nm
  - $M(90^\circ)$ : 0.07 Nm
  - $M(180^\circ)$ : 0.09 Nm



### DISCOUNTS

Qty	1+	6+	20+	50+
Disc.	List	-5%	-10%	On request

Part number	A	B	C	ØD	F	G	ØS	Spring	Weight (g)	Stock*	Price each 1 to 5
										✓	€
CHAR6035	60	35	1	3	7,5	35	5	Opening	22	✓	17,54 €
CHAR6035-F	60	35	1	3	7,5	35	5	Closing	22	-	13,07 €

\*Depending on availability - Dimensions in mm

## CHAR

## Automatic return

**- Hinge with opening spring**

- Sheet metal with rolled knot

- Materials:

**CHAR hinges:** steel, spring :stainless steel

**CHAR/SS hinges:** stainless steel 304: spring stainless steel

- Finish: natural

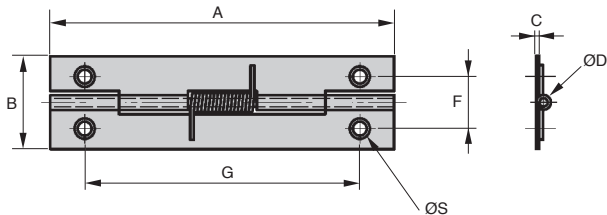
- Spring torque

M(0°): 0.12 Nm

M(90°): 0.09 Nm

M(180°): 0.06 Nm

Available  
in steel or  
stainless  
steel



### DISCOUNTS

Qty	1+	6+	20+	50+
Disc.	List	-5%	-10%	On request

Part number	A	B	C	ØD	F	G	ØS	Spring	Weight (g)	Price each 1 to 5
<b>Steel</b>										
CHAR7520	75	20	0,8	1,8	11,2	60	2	Opening	11,5	✓ 9,26 €
<b>Stainless steel</b>										
CHAR7520/SS	75	20	0,8	1,8	11,2	60	2	Opening	11,5	✓ 12,83 €

\*Depending on availability - Dimensions in mm

**- Hinge with opening or closing spring**

- Sheet metal with rolled knot

- Materials:

**CHAR hinges:** steel, spring :stainless steel

**CHAR/SS:** Hinges: stainless steel 304 ,

spring : stainless steel

- Finish: natural

- Opening spring torque:

M(0°) : 0.9 Nm

M(90°) : 0.86 Nm

M(180°) : 0.6 Nm

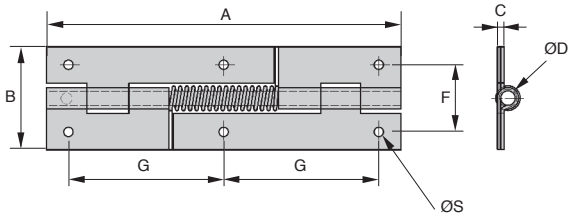
- Closing spring torque:

M(0°) : 0.6 Nm

M(90°) : 0.86 Nm

M(180°) : 0.9 Nm

Available  
in steel or  
stainless  
steel



### DISCOUNTS

Qty	1+	6+	20+	50+
Disc. List	-5%	-10%	On request	

Part number	A	B	C	ØD	F	G	ØS	Spring	Weight (g)	Stock*	Price each 1 to 5
<b>Steel</b>											
CHAR16046	160	46	3	6,5	30	70	4,2	Opening	208	✓	27,66 €
CHAR16046-F	160	46	3	6,5	30	70	4,2	Closing	208	✓	27,66 €
<b>Stainless steel</b>											
CHAR16046/SS	160	46	3	6,5	30	70	4,2	Opening	208	✓	32,60 €

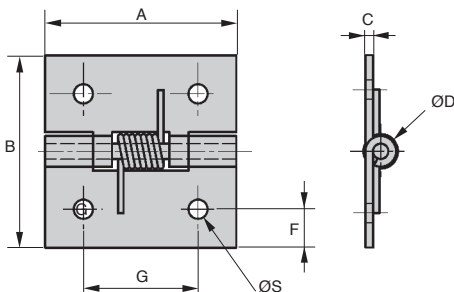
\*Depending on availability - Dimensions in mm

## CHAR

## Automatic return

- Hinge with opening or closing spring
- Sheet metal with rolled knot
- Materials:
  - CHAR hinge:** plated steel, spring :stainless steel
  - CHAR/SS hinge:** natural stainless steel 304: spring stainless steel
- Opening spring torque
  - M(0°): 1.5 Nm
  - M(90°): 1.1 Nm
  - M(180°): 0.65 Nm
- Closing spring torque
  - M(0°): 0.65 Nm
  - M(90°): 1.1 Nm
  - M(180°): 1.5 Nm

Available  
in steel or  
stainless  
steel



### DISCOUNTS

Qty	1+	6+	20+	50+
Disc.	List	-5%	-10%	On request

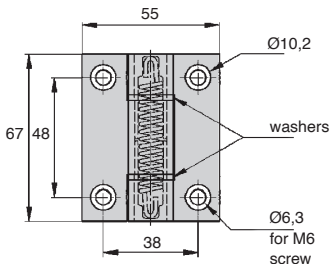
Part number	A	B	C	ØD	F	G	ØS	Spring	Weight (g)	Price each
<b>Steel</b>										
CHAR5050/Z	50	50	2	4	9	30	5	Opening	50	✓ 10,31 €
CHAR5050-F/Z	50	50	2	4	9	30	5	Closing	50	✓ 10,79 €
<b>Stainless steel</b>										
CHAR5050/SS	50	50	2	4	10	30	5	Opening	50	✓ 16,11 €
CHAR5050-F/SS	50	50	2	4	10	30	5	Closing	50	✓ 18,53 €

\*Depending on availability - Dimensions in mm

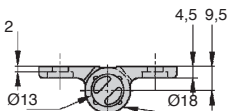
- **Hinge with concealed mechanism**
- Automatic opening or closing of a door or panel
- Resists humidity
- Elegant design
- Low play
- Max opening angle 180°
- Working temp range: -20° to 80 °C
- Fixed using DIN912 screws (not supplied)
- Materials:
  - Black or natural finish aluminium
  - Centre: PA6.6 polyamide
  - Washer: POM
  - Spring: steel
- 0.35 Nm version is guaranteed for 30,000 operations
- 1.30 Nm version is guaranteed for 10,000 operations

### Applications

- Opening doors or covers
- Industrial machines
- Metallic furniture
- Medical equipment



Available in black



### DISCOUNTS

Qty	1+	6+	20+	50+
Disc.	List	-5%	-10%	On request

Part number	Torque (Nm)			Spring	Colour	Weight (g)	Stock*	Price each 1 to 5
	at 0°	at 90°	at 180°					
CHAR6755-L-AG	0,35	0,24	0,12	opening	natural	110	✓	28,75 €
CHAR6755-L-AN	0,35	0,24	0,12	opening	black	110	✓	28,75 €
CHAR6755-H-AG	1,3	1,1	0,9	opening	natural	110	✓	31,25 €
CHAR6755-H-AN	1,3	1,1	0,9	opening	black	110	-	31,25 €
CHAR6755-H-AG-F	1,3	1,1	0,9	closing	natural	110	✓	36,62 €
CHAR6755-H-AN-F	1,3	1,1	0,9	closing	black	110	-	36,62 €

\*Depending on availability - Dimensions in mm



## CHARCAV

## Very easy to install

- Spring-loaded hinges with stopper to lock the hinges in the open position for easy assembly

- 270° opening angle

- Material

304 stainless steel, stainless steel spring

- Spring torque

Opening spring:

M(0°): 1.6 Nm

M(90°): 1.2 Nm

M(180°): 0.84 Nm

Closing spring:

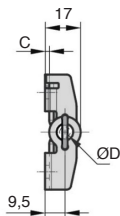
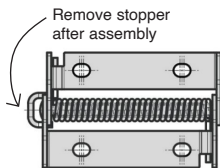
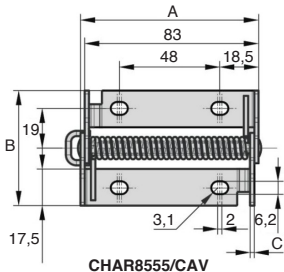
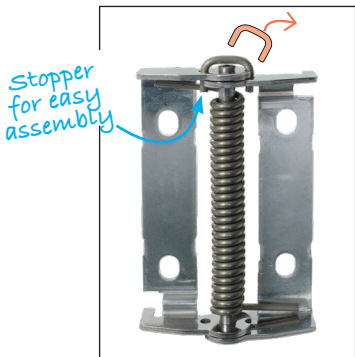
M(0°): 0.75 Nm

M(90°): 1.2 Nm

M(180°): 1.65 Nm

### Info

- Spring hinge opens or closes delivered flat



### DISCOUNTS

Qty	1+	6+	20+	50+
Disc.	List	-5%	-10%	On request

Part number	A	B	C	ØD	Type	Weight (g)	Stock*	Price each 1 to 5
CHAR8555/CAV	85	55	2	5	opening	107	-	23,33 €
CHAR8555-F/CAV	85	55	2	5	closing	107	-	23,33 €

\*Depending on availability - Dimensions in mm

## Our other products



CHB

Worm and wheel gear reducer, up to 22 Nm



RAS

90° ball and socket joints DIN71802, Stainless steel



SDB

Locking bolt support bracket, Mounting holes at 90° to locating bolt



BLHT30

Right angled gearbox, from 1.65 to 4.40 Nm



GAL\_25

Ø25 conveyor roller, Without ball bearing



F7-SN

Multifunction display, Articulated support



HTD14M\_85

HTD Heavy duty timing pulley, HTD14 Cast



LVT

Miniature motorised actuator 1A, 1 amper



BIMSS

Indexing plunger mini, miniature - Stainless



PDM\_PD V

Detectable plastic palm grip, by metal



BLH50

Right angled gearbox, from 7.70 to 20 Nm



SFWR

End support, Surface mounting

## Complementary products



CHAR16046

Spring hinge, screwed



CHAR5050\_Z

Spring hinge, screwed



CHARcav

Spring hinge, to install