

- Screw-on hinge
- Opening angle 270°
- Materials:
 - Aluminium 6060 T5
 - Stainless steel spindle
 - Plastic caps

Advantage

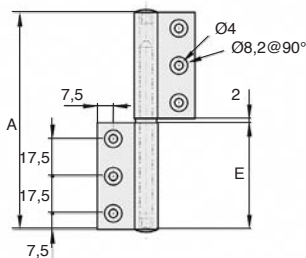
- Reduced space requirement
- Lift-off



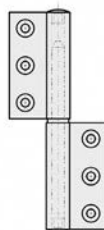
Clear anodised



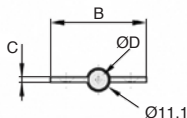
Black anodised



Type 1



Type 2



DISCOUNTS

Qty	1+	6+	20+	50+
Disc	Net	-5%	-10%	On request

Part N°	Type	Finish	A	B	C	ØD	E	Weight (g)	Price each
									1 à 5
CHA-GC-9-1/AL/IN	1	Clear anodised	102	45,9	2,5	6,1	50	50	17,14 €
CHA-GC-9-2/AL/IN	2	Clear anodised	102	45,9	2,5	6,1	50	50	17,14 €
CHA-GC-9-1/AL/BK	1	Black anodised	102	45,9	2,5	6,1	50	50	17,14 €
CHA-GC-9-2/AL/BK	2	Black anodised	102	45,9	2,5	6,1	50	50	17,14 €

All dimensions in mm

0 825 88 6000

Service 0,15 € / min
+ prix appel

Our other products



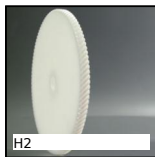
KITdog
24V DC motorisation
kit, Worm and wheel



GE
Toggle latches,
Miniature



WW20
Drylin® W slide, slide
assembly



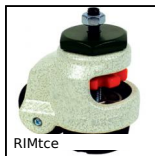
H2
Crossed helical gear
crossed axis at 90°,
Machined plastic
(delrin)



WING
Manually tightened
wing nut, Stainless
steel DIN 314/315



PW_PWG05
Worm - precision
range, Stainless steel



RIMtce
Locking castor, with
central hole



PSG125
Spur gear - precision
range, Pre-hardened
Steel 35NCD6



B3PAN
Panamech, Multi-
Beam stainless steel,
Stainless steel - with



PSG25
Spur gear - precision
range, Stainless steel
316



CHM63-MOT
Asynchronous AC
motorgearboxes 0.37
to 1.5kW, 0.37 to



ACLEPP
Right angled bracket
for aluminium profile,
8 holes

Complementary products



CHA_GC_9SS
Stainless steel garnet
hinge, To be welded



CHA_GC_9SS
Stainless steel garnet
hinge, To be welded



CHAGC-AL
Screw-in garnet
hinge, Screw-on



CHA_GC_14SS
Stainless steel garnet
hinge, To screw