

Decorative **asymmetric** screwed hinge

Pla

CHAE_A

Polyamide

- Screwed hinge

- Materials :

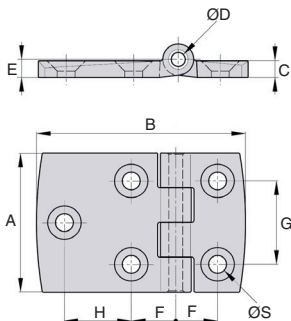
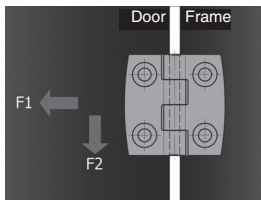
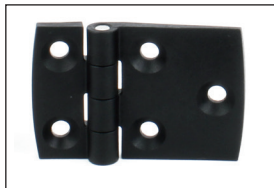
hinges glass fibre reinforced polyamide (30%)
sealed pin : stainless steel 316L

- Square and symmetrical versions also available

Advantage

- Aesthetic design

- Max opening angle 270°



| Part number | Tensile strength | Shear strength | Screw torque (Nm) |
|--------------|------------------|----------------|-------------------|
| CHAE4060A/PA | 2200 | 2300 | 4 |
| CHAE4080A/PA | 2200 | 2300 | 4 |
| CHAE5075A/PA | 3600 | 2500 | 8 |
| CHAE6090A/PA | 5100 | 4200 | 8 |

Dimensions en mm

DISCOUNTS

| Qty | 1+ | 6+ | 20+ | 50+ |
|-------|------|-----|------|------------|
| Disc. | List | -5% | -10% | On request |

| Part number | A | B | C | ØD | E | F | G | H | ØS | For screw | Stock* | Price each |
|--------------|----|----|-----|----|-----|------|----|----|-----|-----------|--------|------------|
| | | | | | | | | | | | 1 to 5 | |
| CHAE4060A/PA | 40 | 60 | 5,2 | 4 | 5,7 | 13,5 | 25 | 19 | 5,3 | M4 | ✓ | 7,94 € |
| CHAE4080A/PA | 40 | 80 | 5,2 | 4 | 5,7 | 14,5 | 25 | 38 | 5,3 | M4 | ✓ | 8,15 € |
| CHAE5075A/PA | 50 | 75 | 5,9 | 5 | 6,4 | 16 | 30 | 24 | 6,4 | M6 | ✓ | 10,09 € |
| CHAE6090A/PA | 60 | 90 | 6,5 | 6 | 7 | 18 | 36 | 30 | 6,4 | M6 | ✓ | 14,14 € |

Dimensions in mm

HPC

WEB
04/2020

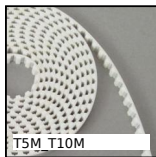
www.hpceurope.com

Tél: 0 825 88 5000 Service 0,15 €/min + prix appel

Our other products



Connecting plate for T type timing belts, T5



T type timing belt per metre, T10 Steel cored polyurethane



Pad eye on mounting plate squarred, Stainless steel



Half-rail guide, Rail



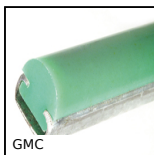
Machined plastic bevel gear, 1:1



Articulated foot with sheet metal base Ø80, Articulated foot



Sliding lock adjustment system, Sliding lock for oblong hole



Flat profile - Round guide, Flat profile - round guide



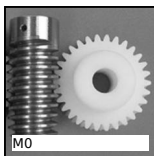
Spherical tilt washer - DIN6319, concave



Adjusting nut, Fine thread



Locking Assembly, Medium/high torque



Worm and wheel set, Machined plastic (delrin)

Complementary products



Decorative screwed hinge, Aluminium



Marine hinge for welding/screw mounting, Marine



Square decorative screwed hinges, carbon fibre reinforced