



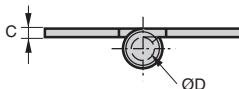
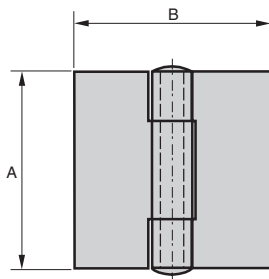
Square hinge with riveted pin, **not drilled**

Sheet metal with rolled knuckle **CHAC-NP**

- Hinge for plug door
- Riveted pin, leaves not offset
- Material:
 - CHAC-NP:** Steel hinge
 - CHAC-NP/SS:** Stainless steel 304
- Natural finish

Advantages

- Economic hinge



DISCOUNTS

Qty	1+	6+	20+	50+
Disc.	List	-5%	-10%	On request

Part number	A	B	C	ØD	Weight (g)	Stock*	Price each
						1 to 5	
Steel							
CHAC4040-NP	40	40	2	4	34	✓	8,69 €
CHAC5050-NP	50	50	2	6	61	✓	10,68 €
CHAC6060-NP	60	60	2	6	82	✓	11,80 €
Stainless steel							
CHAC4040-NP/SS	40	40	2	4	34	✓	14,69 €
CHAC5050-NP/SS	50	50	2	6	61	✓	16,85 €
CHAC6060-NP/SS	60	60	2	6	82	✓	19,03 €

*Depending on availability - Dimensions in mm

Our other products



GB-RA

Brass spur gear, Brass
CuZn39Pb3



MDB_MTB

Moulded plastic bevel
gear (nylon), 2:1



RAGFLOW

Floway2® roller track,
Roller track



SLB

Indexing plunger,
stainless steel



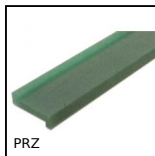
BDPR

Holding arm, Rigid



PTRSS

Idler chain sprocket,
For hostile
environments



PRZ

Wear strip for slat top
chain, Z profile to be
clipped



CHA

Heavy duty plastic
hinge, opens 180°,
Heavy duty - Opens
180°



CMA

Eye bolt, Steel



CHAM5270SS

Marine hinge for
welding/screw



DOG316

Motor-gearbox 12V
and 24V DC, from 1.5



PSPT

Flexible tube handle,
PVC

Complementary products



CHAC4040NP

Square hinge with
riveted pin, not
drilled, Square with
riveted pin,...



CHAC4040SS

Square hinge with
riveted pin, drilled,
Square with riveted
pin, dri...