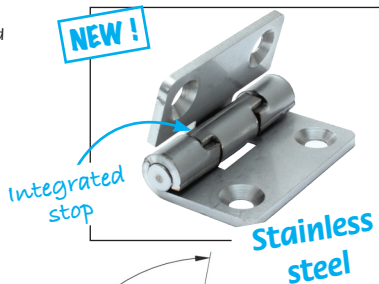


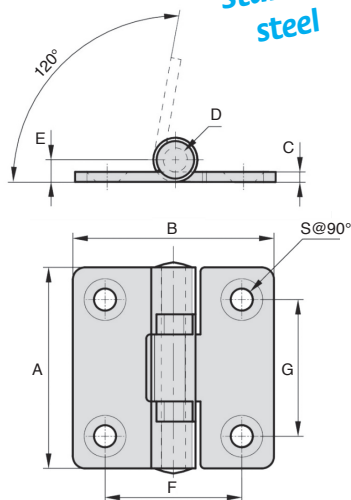
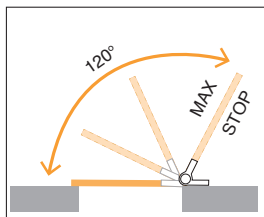
- Hinge for hatch opening
- Its integrated stop avoids the need to add an external stop or a safety bracket
- Materials :
316 stainless steel

Advantages

- Ideal for horizontal use. When it reaches its stop, the hatch is held open under its own weight



Typical application



DISCOUNT

Qty	1+	6+	20+	50+
Disc. List	-10%	-20%	On request	

Part Number	A	B	C	D	E	F	G	S	Weight (g)	Stock*	Price each 1 à 5
CHAB50-50/SS	50	50	2,5	6	5,5	34	34	5,5	70	-	20,58 €

*Depending on availability - Dimensions in mm

Our other products



PRF JL5
Lip seal for panel,
Door seal - Ø 5mm



CABma
Swaging sleeve for
fitting cable, To crimp
a wire rope



AC
Strike for toggle latch,
12,13,18 and 20mm



BLHT50
Right angled gearbox,
from 11.50 to 30 Nm



GLT3-46A
Telescopic drawer
with damper,



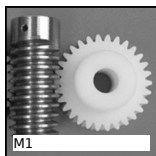
CHA35
Hinge for aluminium
profile, Hinge



G3
Steel spur gear, Steel
20NCD2



EAR
Bearing locknut, Self
locking locknut - nylon
lock washer



M1
Worm and wheel set,
Machined plastic
(delrin)



PSPE22
Conical flexible shaft
handlee Ø22, Black
PVC



DILC
Indexing plunger with
cam, with cam



DOG111
Motor-gearbox 12V
and 24V DC, from 1.5
to 6 Nm

Complementary products