

Rectangular hinge, drilled or countersunk

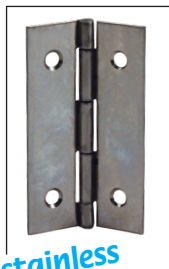
CHA

Sheet metal with rolled knuckle

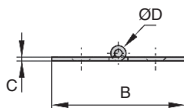
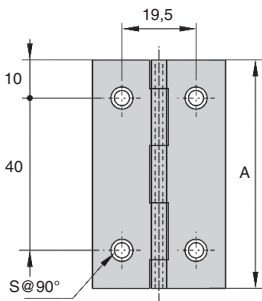
- Universal hinge for plug door
- Material:
 - Stainless steel 304
- Natural finish

Advantages

- Economic hinge



stainless steel



DISCOUNTS

Qty	1+	6+	20+	50+
Disc. List	-5%	-10%	On request	

Part number	A	B	C	ØD	S	Type	Weight (g)	Stock*	Price each 1 to 5
CHA60-35-F/SS	60	35	1	2	4	Countersunk	20	✓	6,22 €

*Depending on availability - Dimensions in mm

HPC

WEB
04/2020

www.hpceurope.com

Tél: 0 825 88 5000 Service 0,15 €/min + prix appel

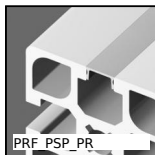
Our other products



PARF110
Pressed steel base rigid foot, Swivelling Ø110



BPFLss
Pressed stainless steel flange bearing, Stainless steel



PRF PSP_PR
Dual purpose strip and cover for aluminium profile, Inserts into slot



PITA
Locking bolt, with T handle



T5-BAR
T type tooth bar stock, T5



BPVMss
Stainless steel miniature ball transfer unit, Miniature to screw



DCG
Suction cup, 2.5 bellows, natural rubber



IBJ
180° ball and socket joints, Steel



PRFRTR
Cross connector for aluminium profile,



BABFCFO
Ball pin socket, Mounting collar with a



PAT85
Pressed stainless steel articulating foot



GG1
Ground spur gear, Heat treated steel

Complementary products



CHAC4040SS
Square hinge with riveted pin, drilled, Square with riveted pin, dri...



CHAC4040NP
Square hinge with riveted pin, not drilled, Square with riveted pin,...