

Rectangular hinge, drilled or countersunk

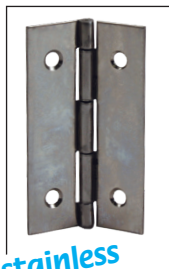
CHA

Sheet metal with rolled knuckle

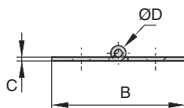
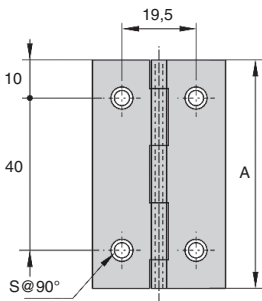
- Universal hinge for plug door
- Material:
 - Stainless steel 304
- Natural finish

Advantages

- Economic hinge



stainless
steel



DISCOUNTS

Qty	1+	6+	20+	50+
Disc.	List	-5%	-10%	On request

Part number	A	B	C	ØD	S	Type	Weight (g)	Stock*	Price each 1 to 5
CHA60-35-F/SS	60	35	1	2	4	Countersunk	20	✓	6,22 €

*Depending on availability - Dimensions in mm

HPC

WEB
04/2020

www.hpceurope.com

Tél: 0 825 88 5000 Service 0,15 €/min + prix appel

Our other products



PSG25
Spur gear - precision range, Pre-hardened Steel 35NCD6



CLSCLP
Clevis components, short version, Steel - short range



GE
Toggle latches, Miniature



PSG155
Spur gear - precision range, Stainless steel 303



M1
Worm and wheel set, Bronze



KB_WW
Closed linear precision bearing, Economy range



BSCm
Knurled torque knobs - male, Knurled threaded torque



R206
Die spring ISO10243, Extra-heavy



PLM-16A
Magnetic stud with threaded hole, With



NTMbr
Set screw brass tip, Brass-point



BH02
Single housed bearing assembly, Bearing



CCL
Standard wire thimble, Steel

Complementary products



CHAC4040SS
Square hinge with riveted pin, drilled, Square with riveted pin, dri...



CHAC4040NP
Square hinge with riveted pin, not drilled, Square with riveted pin,...