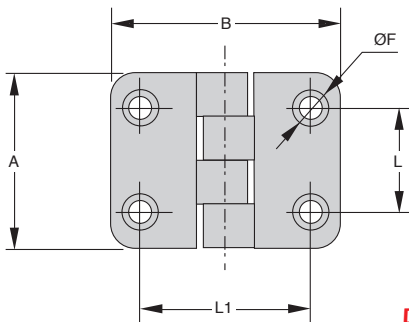
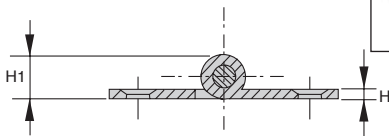


- **Brilliant finish**
- Face frame hinge
- Materials:  
Body: stainless steel 316  
Pin: stainless steel

### Uses

- Pharmaceutical, chemical and food industries



### DISCOUNTS

Qty	1+	6+	10+	25+
Disc. List	-5%	-10%	On request	

Part number	A	B	L	L1	ØF	H	H1	Stock*	Price each 1 to 5
CHA38-38/SS	38	38	20,5	26	5,5	2	9,5	✓	15,77 €
CHA37-48/SS	37	48	22,0	36	5,5	2	9,5	✓	14,72 €

\*Depending on availability - Dimensions in mm

## Our other products



DCA

Suction cup, 1.5 bellows, natural rubber



GFX

Curved tooth coupling, economy range, Steel and polyamide



BAC110

Swivel storage bin, Adjustable support



PRS80

Stainless steel articulated foot Ø80, Ø 80



COA-COG

Surface mounting plate, Surface mounting plate for clevis



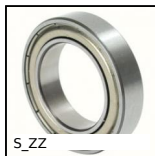
RURp

Wheel pivoting with plate, Polyurethane - Aluminium rim (Free running)



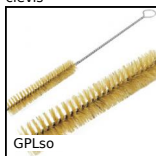
RPP

Connecting plate for RPP type timing belts, RRP5



S\_ZZ

Deep groove ball bearing, Stainless steel



GPLso

Brush, silk



CHTRP

Single and dual output gearboxes, Up



KK

Rounded end feather key, Steel



UGCG

Actuator guide kit, Long housing

## Complementary products



CHA\_D65P

Stainless steel round hinge, Face frame for close-fitting door