

# Polyamide face-mounted hinge ★★★ Stock

## CHAUPA

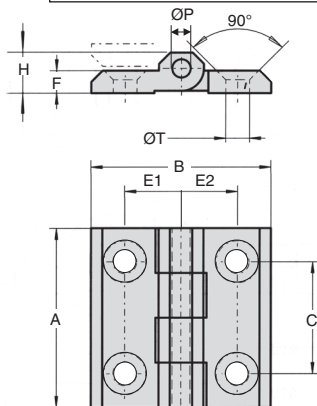
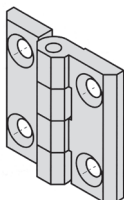
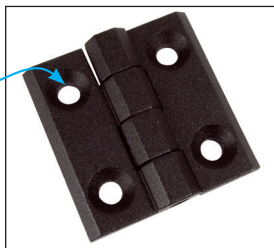
## Opening up to 270°

- **Universal hinge for nested door**
- 270° opening
- Fixing with M5 or M6 countersunk screws according to DIN7991
- Molded hinge
- Materials:
  - Black polyamide
  - Stainless steel pin

### Advantages

- Beautiful finish

*With countersunk holes*



### DISCOUNTS

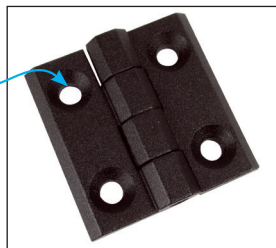
Qty	1+	6+	20+	50+
Disc.	List	-5%	-10%	On request

Part number	A	B	C	E1	E2	H	F	ØT	ØP	Stock*	Price each 1 to 5
<b>Square hinge</b>											
CHA1056-U6PA	40	40	25	12,5	12,5	9	5	5,3	4	✓	9,21 €
CHA1056-U10PA	50	50	30	15	15	11,5	6	6,2	6	✓	10,72 €

\*Depending on availability - Dimensions in mm

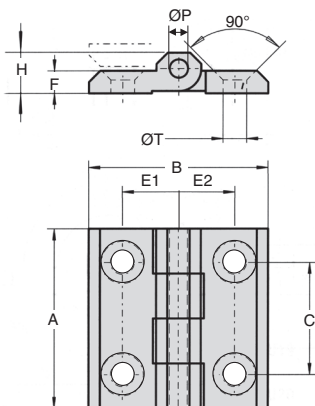
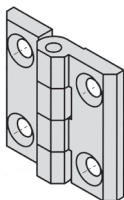
- **Universal hinge for nested door**
- 270° opening
- Fixing with M5, M6 or M8 countersunk screws according to DIN7991
- Molded hinge
- Materials:
  - Die cast zinc
  - Stainless steel pin

*With countersunk holes*



### Advantages

- Beautiful finish



### DISCOUNTS

Qty	1+	6+	20+	50+
Disc.	List	-5%	-10%	On request

Part number	A	B	C	E1	E2	H	F	ØT	ØP	Stock*	Price each 1 to 5
<b>Square hinge</b>											
CHA1056-U6	40	40	25	12,5	12,5	9	5	5,3	4	✓	12,32 €
CHA1056-U10	50	50	30	15	15	11,5	6	6,2	6	✓	12,83 €
CHA1056-U14	60	60	36	18	18	15	8	8,3	8	✓	16,03 €
<b>Rectangular hinge</b>											
CHA1056-U18	50	76	30	28	28	11	6	6,2	6	✓	30,73 €

\*Depending on availability - Dimensions in mm

# Stainless steel face-mounted hinge ★★★ Stock

## CHAuss

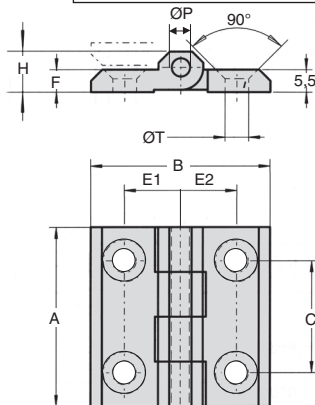
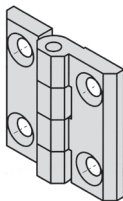
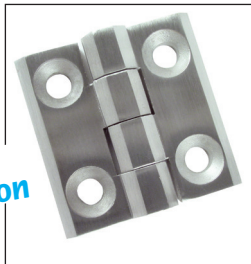
## With countersunk holes

- **Universal hinge for nested door**
- 270° opening
- Fixing with M5, M6, M8 countersunk screws according to DIN7991
- The visible surface is satin polished
- Molded hinge
- Materials:  
Stainless steel 316

### Advantages

- Beautiful finish

stainless steel version



### DISCOUNTS

Qty	1+	6+	20+	50+
Disc. List	-5%	-10%	On request	

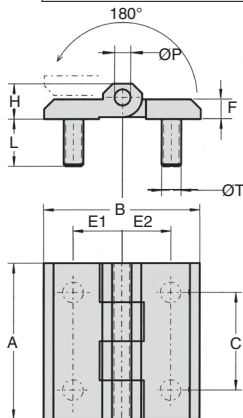
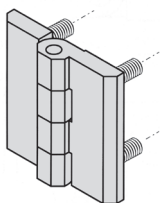
Part number	A	B	C	E1	E2	H	F	ØT	ØP	Stock*	Price each 1 to 5
<b>Square hinge</b>											
CHA1056-U6SS	40	40	25	12,5	12,5	9	5	5,3	4	✓	29,50 €
CHA1056-U10SS	50	50	30	15	15	11,5	6	6,2	6	✓	32,01 €
CHA1056-U14SS	60	60	36	18	18	15	8	8,3	8	✓	32,21 €

\*Depending on availability - Dimensions in mm

- **Universal hinge for nested door**
- 180° opening
- Nut fixing
- Molded hinge
- **Materials:**
  - Die cast zinc
  - Stainless steel molded anchors
  - Stainless steel pin

### Advantages

- Beautiful finish



### DISCOUNTS

Qty	1+	6+	20+	50+
Disc.	List	-5%	-10%	On request

Part number	A	B	C	E1	E2	H	F	ØT	L	ØP	Stock*	Price each 1 to 5
<b>Square hinge</b>												
CHA1056-U4	40	40	25	12,5	12,5	9	5	M5	12	4	✓	17,27 €
CHA1056-U8	50	50	30	15	15	11,5	6	M6	15	6	✓	17,15 €
CHA1056-U12	60	60	36	18	18	15	8	M8	14	8	-	22,70 €
<b>Rectangular hinge</b>												
CHA1056-U16	50	76	30	28	28	11	6	M6	12	6	✓	30,07 €
<b>Asymmetric rectangular hinge</b>												
CHA1056-U20	60	90	36	18	45	15	8	M8	14	8	✓	32,24 €

\*Depending on availability - Dimensions in mm

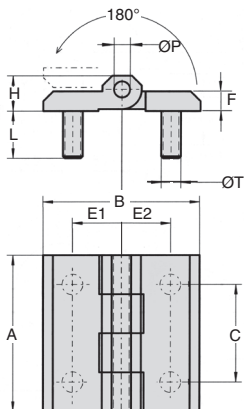
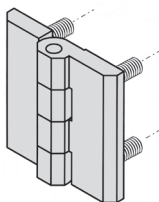
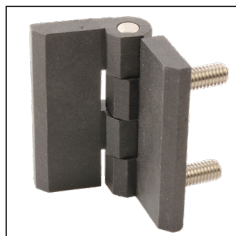
# Molded polyamide face-mounted hinge ★★★ **Stock**

## CHAUPA With anchors

- Universal hinge for plug door
- 180° opening
- Nut fixing
- Molded hinge
- **Materials:**
  - Black polyamide
  - Stainless steel molded anchors
  - Stainless steel pin

### Advantages

- Beautiful finish



### DISCOUNTS

Qty	1+	6+	20+	50+
Disc.	List	-5%	-10%	On request

Part number	A	B	C	E1	E2	H	F	ØT	ØP	Stock*	Price each 1 à 5
<b>Square hinge</b>											
CHA1056-U4PA	40	40	25	12,5	12,5	9	5	M5	12	-	13,91 €
CHA1056-U8PA	50	50	30	15	15	11,5	6	M6	15	✓	15,24 €

\*Depending on availability - Dimensions in mm

## Our other products



ZG3  
Plastic spur gear,  
Machined plastic  
(delrin)



GB-RA  
Brass spur gear, Brass  
CuZn39Pb3



VDS  
Sliding lock  
adjustment system,  
Sliding lock for oblong  
hole



DGSA  
Male rod ends , Steel /  
steel - Economy range



PW\_PWG25  
Worm - precision  
range, Stainless steel



Q6  
Deep groove ball  
bearing, Steel



R204  
Die spring ISO10243,  
Average



MDPOT  
Potentiometer,



GTCSS  
Belt tensioner, For use  
in hostile  
environments



MDB\_MTB  
Moulded plastic bevel  
gear (nylon), 3:1



BFDdII  
Locking pin for  
bushes, Nickel-plated  
steel



SHS  
Shoulder screw  
stainless steel 303,  
Stainless steel 303

Complementary products