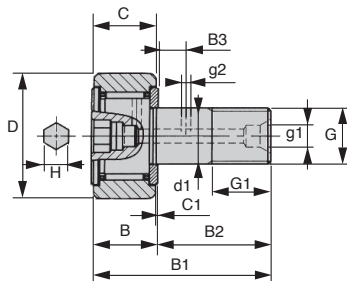
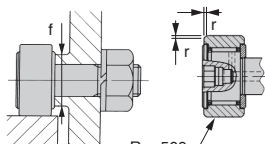


Stainless steel cam follower Sta

IKO CFUR/SS

Bearing diameters from 10 to 52mm

- Axle mounted cam followers
- With synthetic rubber seals mounted in the external ring
- Easy fitted using an allen key
- For mounting holes from 3 to 20mm, tolerance H7
- Material - Stainless steel



R = 500 CF... UUR/SS

DISCOUNTS

| | | | |
|-------|------|------|------------|
| Qty | 1+ | 6+ | 10+ |
| Disc. | List | -20% | On request |

| Part numbers | Ø Min shoulder size (mm) | Max tightening torque (Nm) | Dynamic load C (N) | Static load base C (N) | max. load (N) | Max speed (1) (rpm) | g1 (mm) | g2 (mm) | r min. (mm) | Weight (g) |
|--------------|--------------------------------|-------------------------------------|--------------------------|------------------------------|---------------------|---------------------------|------------|------------|-------------------|---------------|
| CF3UUR/SS | 6.8 | 0.34 | 1200 | 813 | 384 | 50000 | - | - | 0.2 | 4.3 |
| CF4UUR/SS | 8.3 | 0.78 | 1650 | 1270 | 834 | 34000 | - | - | 0.3 | 7.4 |
| CF5UUR/SS | 9.3 | 1.60 | 1930 | 1730 | 1260 | 38000 | - | - | 0.3 | 10.3 |
| CF6UUR/SS | 11.0 | 2.70 | 2930 | 2920 | 1950 | 22000 | - | - | - | 18.5 |
| CF8UUR/SS | 13.0 | 6.50 | 3400 | 3790 | 3790 | 17000 | - | - | - | 28.5 |
| CF10UUR/SS | 16.0 | 13.80 | 4340 | 5510 | 5510 | 14000 | - | - | - | 45.0 |
| CF12UUR/SS | 21.0 | 21.90 | 6330 | 7830 | 7830 | 11000 | 4 | 3 | - | 95.0 |
| CF16UUR/SS | 26.0 | 58.50 | 9620 | 14700 | 14700 | 8500 | 4 | 3 | - | 170.0 |
| CF18UUR/SS | 29.0 | 86.20 | 14800 | 25200 | 25200 | 7000 | 6 | 3 | 1.0 | 250.0 |
| CF20UUR/SS | 34.0 | 119.0 | 20700 | 34600 | 34600 | 6500 | 6 | 4 | 1.0 | 460 |

| Part number | Ød1 | ØD | C | ØG | G1 | B | B1 | B2 | B3 | C1 | H | Stock* | Price each 1 to 5 |
|-------------|-----|----|----|----------|------|------|------|------|----|-----|-----|--------|----------------------|
| CF3UUR/SS | 3 | 10 | 7 | M3x0.5 | 5.0 | 8.0 | 17.0 | 9.0 | - | 0.5 | 2 | ✓ | 70.94 € |
| CF4UUR/SS | 4 | 12 | 8 | M4x0.7 | 6.0 | 9.0 | 20.0 | 11.0 | - | 0.5 | 2.5 | ✓ | 62.20 € |
| CF5UUR/SS | 5 | 13 | 9 | M5x0.8 | 7.5 | 10.0 | 23.0 | 13.0 | - | 0.5 | 3 | ✓ | 58.25 € |
| CF6UUR/SS | 6 | 16 | 11 | M6x1 | 8.0 | 12.2 | 28.2 | 16.0 | - | 0.6 | 3 | ✓ | 54.50 € |
| CF8UUR/SS | 8 | 19 | 11 | M8x1.25 | 10.0 | 12.2 | 32.2 | 20.0 | - | 0.6 | 4 | ✓ | 56.00 € |
| CF10UUR/SS | 10 | 22 | 12 | M10x1.25 | 12.0 | 13.2 | 36.2 | 23.0 | - | 0.6 | 4 | ✓ | 56.00 € |
| CF12UUR/SS | 12 | 30 | 14 | M12x1.5 | 13.0 | 15.2 | 40.2 | 25.0 | 6 | 0.6 | 6 | ✓ | 70.15 € |
| CF16UUR/SS | 16 | 35 | 18 | M16x1.5 | 17.0 | 19.6 | 52.1 | 32.5 | 8 | 0.8 | 6 | ✓ | 83.55 € |
| CF18UUR/SS | 18 | 40 | 20 | M18x1.5 | 19.0 | 21.6 | 58.1 | 36.5 | 8 | 0.8 | 8 | ✓ | 102.05 € |
| CF20UUR/SS | 20 | 52 | 24 | M20x1.5 | 21.0 | 25.6 | 66.1 | 40.5 | 9 | 0.8 | 8 | ✓ | 137.96 € |

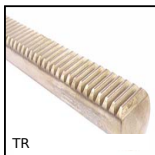
*Depending on availability - Dimensions in mm

Our other products



CHN_CHNSS

Straight long link chain, Galvanised steel



TR

Spur round rack, Stainless steel - module 0,25-1,5



MFB

Flexible bellows coupling, Aluminium and Bronze - With set screw



PRF_BASE

Base plate for aluminium profile, Base plate



KB_WW

Closed linear precision bearing, Economy range



MEB

Moulded plastic bevel gear (nylon), 1:1



VDSCB

Sliding lock adjustment system, Blocking wedge for sliding lock for ...



RPP

Connecting plate for RPP type timing belts, RPP8



PF20

Worm and wheel gear reducer, up to 5 Nm



BPHFclip

Clip for ball transfer unit, Insert clip - Installing from above



VQTplqn

Quarter-turn clamp lock - Clamping plate, Flush mounting



DOG319

Motor-gearbox 12V and 24V DC, from 4 to 9 Nm

Complementary products



CF

Cam follower, Standard - steel



CF

Cam follower, Standard - steel