

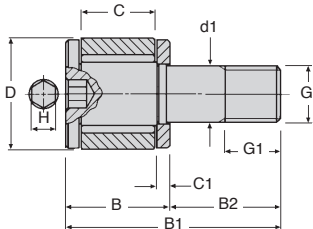
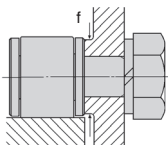
Miniature cam follower



CFS IKO
CFSv

Roller diameter 10-90mm

- Miniature axle mounted cam follower
- Not fitted with seals
- Diameter of housing 2.5 to 6mm, tolerance H6
- Assemble using an Allen key
- Material: carbon steel



DISCOUNTS

Qty	1+	6+	20+	40+
Disc.	List	-15%	-20%	On request

Part number	Min. flange Ø f (mm)	Max. tightening torque (Nm)	Basic dynamic load C (N)	Basic static load C (N)	Max. admissible load (N)
CFS2,5	4,8	0,18	428	351	351
CFS2,5V	4,8	0,18	1000	1080	360
CFS3	5,8	0,33	629	611	484
CFS3V	5,8	0,33	1420	1790	484
CFS4	7,7	0,78	1120	1120	919
CFS4V	7,7	0,78	2370	3000	919
CFS5	9,6	1,58	1570	1850	1570
CFS5V	9,6	1,58	3180	4700	1570
CFS6	11,6	2,68	2090	2200	2150
CFS6V	11,6	2,68	4610	6250	2150

Part number		d1 (h6)	D ^{+0.008}	C ^{+0.12}	G	G1	B	B1	B2	C1	H	Stock	Stock	Price each 1 to 5
With cage	With joint needles											With cage	With joint needles	
CFS2.5	CFS2.5V	2,5	5	3	M2,5 x 0,45	2,5	4,5	9,5	5	0,7	0,9	✓	-	66,83 €
CFS3	CFS3V	3,0	6	4	M3 x 0,5	3,0	5,5	11,5	6	0,7	1,3	✓	✓	62,30 €
CFS4	CFS4V	4,0	8	5	M4 x 0,7	4,0	7,0	15,0	8	1,0	1,5	✓	✓	51,56 €
CFS5	CFS5V	5,0	10	6	M5 x 0,8	5,0	8,0	18,0	10	1,0	2,0	✓	✓	50,00 €
CFS6	CFS6V	6,0	12	7	M6 x 1	6,0	9,5	21,5	12	1,2	2,5	✓	✓	45,37 €

*Depending on availability - Dimensions in mm

Our other products



CLASS
Stainless steel indexing handle - female, Stainless steel



T25-6ECO
T type timing pulley, Economy range - T2.5 aluminium



GGP
Male wing knob, Technopolymer with brass spindle



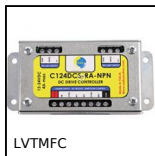
CHTRB
Single and dual output gearboxes, Up to 16,5 Nm



YG0
HEAVY DUTY spur gear, Steel 35NCD6



CHAsb89
Hinge without pin, Plastic hinge



LVTMFC
Device for controlling limit switches, For mini-actuator LVT



CF
Cam follower, Standard - steel



BABpss
301 Stainless steel ball pin, Stainless



SLV
Vertical toggle clamp, Vertical Lever Clamp -



H1
Crossed helical gear crossed axis at 90°



BVR
Adjustable screw stop, Steel

Complementary products



CFES
Eccentric cam follower, Eccentric