



Female rod ends DIN ISO 12240-4

Steel/self-lubricating bronze contact

CFFRH CFFLH

- Female threaded rod end conforming to DIN ISO 12240-4 K series

- Materials:

Sphere: Steel 100CG ground and polished

Insert: Bronze

Housing:

sizes 5 to 12- low carbonised steel

sizes 16 to 35 – high carbon steel alloy,

surface is galvanised and passivated

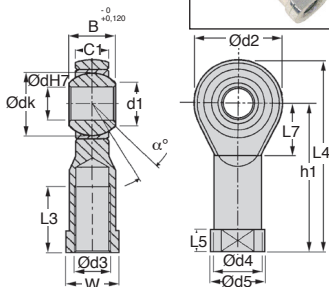
- Working temperature: -30°C to +120°C (150°C occasionally)

Advantages

- Self-lubricating
- Maintenance free
- Bearing surface wear-resistant
- Low friction

Application

- Oscillating movements



DISCOUNTS

Qty	1+	6+	20+	40+	60+
Disc. List	-15%	-20%	-30%	On request	

Part number	Ød	Ød3	B	C1	Ød1	Ød2	Ød4	Ød5	Ødk	h1	L3	L4	L5	L7	W
CFF.00.05	5	M5x0,8	8	6,00	7,70	18	9,00	11	11,112	27	10	36	4,00	10	9
CFF.00.06	6	M6x1	9	6,75	8,90	20	10,00	13	12,700	30	12	40	5,00	11	11
CFF.00.08	8	M8x1,25	12	9,00	10,40	24	12,50	16	15,875	36	16	48	5,00	13	14
CFF.00.10	10	M10x1,5	14	10,50	12,90	28	15,00	19	19,050	43	20	57	6,50	15	17
CFF.00.12	12	M12x1,75	16	12,00	15,40	32	17,50	22	22,225	50	22	66	6,50	17	19
CFF.00.16	16	M16x2	21	15,00	19,30	42	22,00	27	28,575	64	28	85	8,00	23	22
CFF.00.20	20	M20x2,5	25	18,00	24,30	50	27,50	34	34,925	77	33	102	10,00	27	30
CFF.00.30	30	M30x2	37	25,00	34,80	70	40,00	50	50,800	110	51	145	15,00	36	41
CFF.00.35	35	M36x2	43	28,00	37,70	80	46,00	58	57,150	125	56	165	17,00	41	50

Part number	Radial static load F _s (daN)	Axial holding load of the ball (daN)	Movement angle α°	Weight (g)	Stock*		Price each 1 to 5		
					RH	LH	RH	LH	
CFF.00.05/RH	CFF.00.05/LH	600	100	13	19	✓	✓	13,87 €	16,04 €
CFF.00.06/RH	CFF.00.06/LH	700	120	13	26	✓	✓	11,89 €	13,77 €
CFF.00.08/RH	CFF.00.08/LH	1 200	170	14	46	✓	✓	12,49 €	14,45 €
CFF.00.10/RH	CFF.00.10/LH	1 400	200	13	76	✓	✓	14,11 €	16,33 €
CFF.00.12/RH	CFF.00.12/LH	1 900	270	13	110	✓	✓	17,13 €	19,80 €
CFF.00.16/RH	CFF.00.16/LH	4 800	550	15	220	✓	✓	34,40 €	39,72 €
CFF.00.20/RH	CFF.00.20/LH	5 200	600	14	409	✓	-	62,22 €	71,79 €
CFF.00.30/RH	CFF.00.30/LH	10 800	1 200	17	1 140	✓	-	146,95 €	169,57 €
CFF.00.35/RH	CFF.00.35/LH	12 400	1 400	19	1 600	-	-	180,24 €	207,99 €

*Depending on availability - Dimensions in mm

Our other products



SSG1

Stainless steel spur gear, Stainless steel 304L



MRASSeco

Low cost stainless steel quick link, Stainless steel



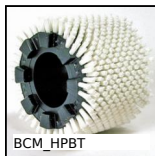
MBF

Threaded blocking clamp, Threaded locking clamp



PRES

Manual workbench press accessory for PRES-3HR end PRES-4HR, Micromet...



BCM_HPBT

Modular cylindrical brush, PBT polyester bristles



ACLEFS

Floor anchor for aluminium profile, Adjustable



CMM

Male rod ends DIN ISO12240-4, Steel / bronze



HLC28

Right angle spiro bevel gearbox, Up to 182Nm



KBS_UU

Stainless steel closed precision linear



ZBconique

Machined plastic bevel gear, 1:1



PSG15

Spur gear - precision range, Case hardened



SH0

Parallel axis helical gear, Steel 20NCD2

Complementary products



CFF_SS

Female rod ends DIN ISO12240-4, Stainless steel / bronze - Economy r...



SFE

Female rod ends, Stainless steel / PTFE