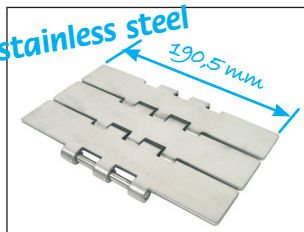


- Ideal for moving large or heavy loads
- Completely smooth surface
- With double hinge
- Materials:
  - Plates: polished cold-laminated stainless steel (30HRC min.)
  - Pin: special stainless steel (41-44HRC)
- Operating temp.: -40°C to +260°C (+120°C in humid environments)
- Length 3048mm (80 plates)

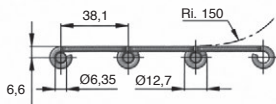
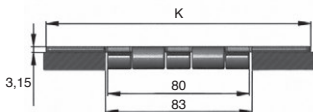
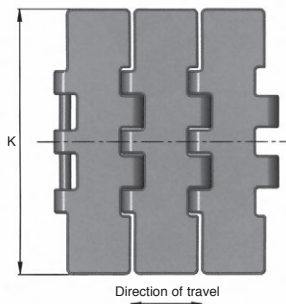


### Advantages

- Large width
- High carrying capacity

### Associated products

- Drive sprocket **PT821**
- Idler sprocket **PR821**
- Idler **DBL805**



### DISCOUNTS

Qty.	1+	5+	10+
Disc.	List	-5%	On request

Part number	Width K (mm)	Length (mm)	Breaking load (N)	Weight (kg/m)	Price each 1 to 4
CAP805-190/SS	190,5	3048	19000	5,8	252,74 €

Dimensions in mm

## Our other products



RHTcscs  
High Temperature  
Castor, up to 200kg



CHMR40  
Worm and wheel gear  
reducer, up to 57 Nm



BLHT50  
Right angled gearbox,  
from 11.50 to 30 Nm



PRF\_FIX\_ANG  
Fastener for  
aluminium profile,  
Angular joint



WING  
Manually tightened  
wing nut, Stainless  
steel DIN 314/315



BPTR\_M  
End cap with threaded  
insert for round tube,  
With threaded insert



G0  
Stainless steel spur  
gear, Stainless steel  
303



CHM30  
Worm and wheel gear  
reducer, up to 28 Nm



ZHG6  
Plastic spur gear,  
Machined plastic



PRF4532  
Standard aluminium  
profile, 45 x 32 mm



INS\_SS  
Self tapping stainless  
steel insert, 316



NIN  
Self-locking nut, Steel

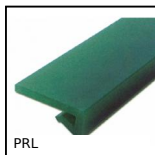
## Complementary products



PT821  
Drive sprocket for slat  
top chain, Ranges 821  
and 805



PR821  
Idler sprocket for slat  
top chain, Ranges 821  
and 805



PRL  
Wear strip for slat top  
chain, L profile to be  
clipped