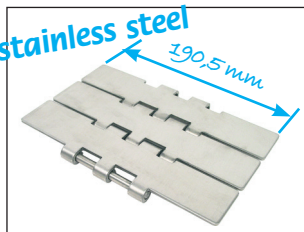


- Ideal for moving large or heavy loads
- Completely smooth surface
- With double hinge
- Materials:
  - Plates: polished cold-laminated stainless steel (30HRC min.)
  - Pin: special stainless steel (41-44HRC)
- Operating temp.: -40°C to +260°C (+120°C in humid environments)
- Length 3048mm (80 plates)

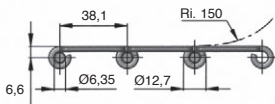
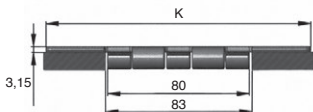
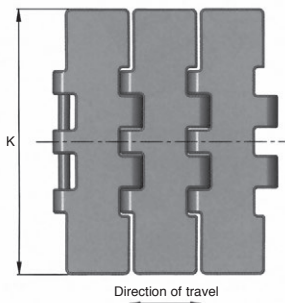


### Advantages

- Large width
- High carrying capacity

### Associated products

- Drive sprocket **PT821**
- Idler sprocket **PR821**
- Idler **DBL805**



### DISCOUNTS

Qty.	1+	5+	10+
Disc.	List	-5%	On request

Part number	Width K (mm)	Length (mm)	Breaking load (N)	Weight (kg/m)	Price each 1 to 4
CAP805-190/SS	190,5	3048	19000	5,8	252,74 €

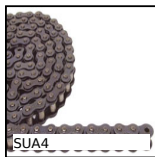
Dimensions in mm

## Our other products



PSG15

Spur gear - precision range, Stainless steel 303



SUA4

Single chain supplied by the metre, Steel



M0

Worm and wheel set, Hardened steel



SSDB

Stainless steel bevel gear, 2:1



DOMI50

Accessories, Clamping lever



GBMz

Cylindrical ballscrew nut, Cylindrical nut - Multiple starts



BSCf

Knurled torque knobs - female, Knurled threaded torque



PRF\_GAL

Roller for aluminium profile, Flat roller



PRF\_PF

Anchoring bracket for aluminium profile, Anchor



DB

Steel bevel gear, 2:1



CHTRP

Single and dual output gearboxes, Up to 87,3 Nm



BPM\_LOK

Long-Lok slotted spring plunger with ball tip, LONG-LOK - Stainless ...

## Complementary products



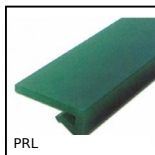
PT821

Drive sprocket for slat top chain, Ranges 821 and 805



PR821

Idler sprocket for slat top chain, Ranges 821 and 805



PRL

Wear strip for slat top chain, L profile to be clipped