

- Radial elasticity greater than axial elasticity
- Cylinder worked under compression and shearing
- Materials:
 - core: stainless steel A2 plates
 - cylinder: rubber
- **Hardness:** NK 55-60 shore A
- Working temp: -40°C to +70°C

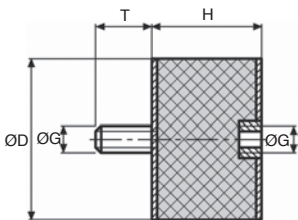
Uses

- Noise and vibration dampening

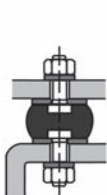
Info.

- Not sold individually, please contact us for details
- Values for loads and rigidity are given as a guide only

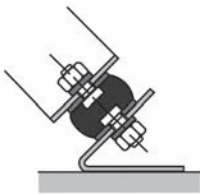
stainless steel



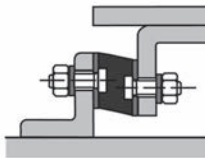
From size M3 upwards



Compression



Compression
Shearing



Shearing

DISCOUNTS **A**

Qty	1+	6+	20+	40+	100+
Disc.	List	-10%	-15%	-20%	On request

DISCOUNTS **B**

Qty	1+	6+	10+	15+	20+	50+
Disc.	List	-10%	-15%	-20%	-25%	On request

Part number	ØG	ØD	H	T	Compression		Shearing		Stock*	Price each 1 to 5
					stiffness (N/mm)	Max. load (N)	stiffness (N/mm)	Max. load (N)		
B-ZY3-8-8/SS	M3	8	8	6	-	-	-	-	✓	A 5,99 €
B-ZY4-10-10/SS	M4	10	10	10	48	43	10	35	✓	A 3,14 €
B-ZY4-10-15/SS	M4	10	15	10	29	43	5	15	✓	A 3,44 €
B-ZY4-15-15/SS	M4	15	15	10	67	95	15	35	✓	A 3,07 €
B-ZY4-15-20/SS	M4	15	20	10	-	-	-	-	✓	A 3,27 €
B-ZY4-15-30/SS	M4	15	30	15	-	-	-	-	✓	A 3,38 €
B-ZY5-15-15/SS	M5	15	15	8	67	95	15	35	✓	A 3,38 €
B-ZY6-20-15/SS	M6	20	15	18	130	170	24	60	✓	A 3,62 €
B-ZY6-20-20/SS	M6	20	20	18	-	-	-	-	✓	A 3,70 €
B-ZY6-20-25/SS	M6	20	25	18	61	170	11	60	✓	A 3,70 €
B-ZY6-25-15/SS	M6	25	15	18	-	-	-	-	✓	A 4,00 €
B-ZY6-25-20/SS	M6	25	20	18	130	280	30	95	✓	A 4,63 €
B-ZY6-25-25/SS	M6	25	25	18	-	-	-	-	✓	A 5,48 €
B-ZY6-25-30/SS	M6	25	30	18	71	280	19	95	✓	A 4,82 €
B-ZY8-30-15/SS	M8	30	15	20	525	400	58	140	✓	A 5,93 €
B-ZY8-30-20/SS	M8	30	20	20	235	400	42	140	✓	A 5,65 €
B-ZY8-30-25/SS	M8	30	25	20	-	-	-	-	✓	A 6,60 €
B-ZY8-30-30/SS	M8	30	30	20	113	400	28	140	✓	A 6,70 €
B-ZY8-30-40/SS	M8	30	40	20	106	400	13	140	✓	A 7,26 €
B-ZY8-40-25/SS	M8	40	25	23	-	-	-	-	✓	A 7,87 €
B-ZY8-40-30/SS	M8	40	30	23	234	650	49	250	✓	A 8,25 €
B-ZY8-40-40/SS	M8	40	40	23	147	650	23	250	-	A 9,68 €
B-ZY10-40-30/SS	M10	40	30	28	-	-	-	-	✓	A 9,09 €
B-ZY10-50-20/SS	M10	50	20	28	857	1000	110	400	✓	A 12,64 €
B-ZY10-50-25/SS	M10	50	25	28	-	-	-	-	✓	A 12,86 €
B-ZY10-50-30/SS	M10	50	30	28	395	1000	73	400	✓	A 12,63 €
B-ZY10-50-40/SS	M10	50	40	28	273	1000	58	400	✓	A 13,88 €
B-ZY10-50-45/SS	M10	50	45	28	-	-	-	-	✓	A 13,72 €
B-ZY10-50-50/SS	M10	50	50	28	210	1000	37	400	✓	A 15,44 €
B-ZY10-60-40/SS	M10	60	40	28	-	-	-	-	-	A 18,20 €
B-ZY10-70-45/SS	M10	70	45	28	-	-	-	-	-	A 26,69 €
B-ZY12-60-40/SS	M12	60	40	33	-	-	-	-	✓	B 17,16 €
B-ZY12-75-25/SS	M12	75	25	37	-	-	-	-	✓	B 20,67 €
B-ZY12-75-40/SS	M12	75	40	37	735	2300	118	850	✓	B 22,75 €
B-ZY12-75-50/SS	M12	75	50	37	530	2300	101	850	-	B 26,87 €
B-ZY12-75-55/SS	M12	75	55	37	417	2300	78	850	-	B 27,38 €
B-ZY16-100-40/SS	M16	100	40	41	2160	4200	283	1600	-	B 48,53 €
B-ZY16-100-55/SS	M16	100	55	41	892	4200	145	1600	-	B 53,30 €
B-ZY16-100-60/SS	M16	100	60	41	843	4200	142	1600	-	B 54,88 €
B-ZY16-100-75/SS	M16	100	75	41	-	-	-	-	-	B 63,64 €

*Depending on availability - Dimensions in mm

Our other products



EHD12

Internal epicyclic servo reducers, from 60 to 140 Nm



T39_T49

Extension spring in metre length steel, by the metre



MSP3815

Masterplate® glueable insert rectangular, rectangular with nut



PCS50SS

Chain sprocket - Stainless steel, 12.7mm (DIN 08B-1)



BOX-TOR-MAX

Box set of Nitrile O-rings in nitrile, 2.90 x 1.78mm to 82.14 x 3.53



SDC

Positioning sleeve for indexing pin, For pin Ø4 to Ø12



SERB

Cam latch, Cam latch



DOMI50

Connecting kits, XZ linking kit



MBronnelle

Stop washer, Stop washer MB



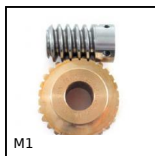
PCH

Knob for gripping, Mushroom



PW_PWG25

Worm - precision range, Steel



M1

Worm and wheel set, Bronze

Complementary products



BZY

Cylindrical elasto mount, Steel



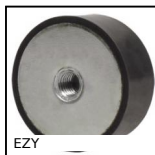
AZY_SS

Stainless steel cylindrical elasto mount, Stainless steel



AZY

Cylindrical elasto mount, Steel



EZY

Cylindrical stop, Steel