

- Radial elasticity greater than axial elasticity
- Cylinder worked under compression and shearing
- Materials:
 - core: stainless steel A2 plates
 - cylinder: rubber
- **Hardness:** NK 55-60 shore A
- Working temp: -40°C to +70°C

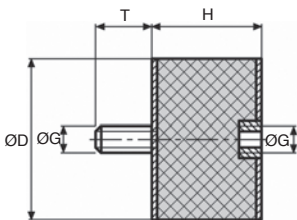
Uses

- Noise and vibration dampening

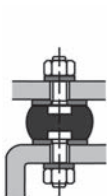
Info.

- Not sold individually, please contact us for details
- Values for loads and rigidity are given as a guide only

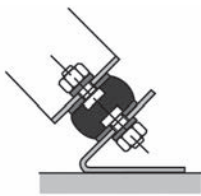
stainless steel



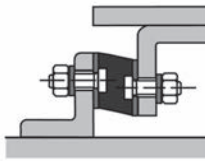
From size M3 upwards



Compression



Compression
Shearing



Shearing

DISCOUNTS **A**

Qty	1+	6+	20+	40+	100+
Disc.	List	-10%	-15%	-20%	On request

DISCOUNTS **B**

Qty	1+	6+	10+	15+	20+	50+
Disc.	List	-10%	-15%	-20%	-25%	On request

Part number	ØG	ØD	H	T	Compression		Shearing		Stock*	Price each 1 to 5
					stiffness (N/mm)	Max. load (N)	stiffness (N/mm)	Max. load (N)		
B-ZY3-8-8/SS	M3	8	8	6	-	-	-	-	✓	A 5.99 €
B-ZY4-10-10/SS	M4	10	10	10	48	43	10	35	✓	A 3.14 €
B-ZY4-10-15/SS	M4	10	15	10	29	43	5	15	✓	A 3.44 €
B-ZY4-15-15/SS	M4	15	15	10	67	95	15	35	✓	A 3.07 €
B-ZY4-15-20/SS	M4	15	20	10	-	-	-	-	✓	A 3.27 €
B-ZY4-15-30/SS	M4	15	30	15	-	-	-	-	✓	A 3.38 €
B-ZY5-15-15/SS	M5	15	15	8	67	95	15	35	✓	A 3.38 €
B-ZY6-20-15/SS	M6	20	15	18	130	170	24	60	✓	A 3.62 €
B-ZY6-20-20/SS	M6	20	20	18	-	-	-	-	✓	A 3.70 €
B-ZY6-20-25/SS	M6	20	25	18	61	170	11	60	✓	A 3.70 €
B-ZY6-25-15/SS	M6	25	15	18	-	-	-	-	✓	A 4.00 €
B-ZY6-25-20/SS	M6	25	20	18	130	280	30	95	✓	A 4.63 €
B-ZY6-25-25/SS	M6	25	25	18	-	-	-	-	✓	A 5.48 €
B-ZY6-25-30/SS	M6	25	30	18	71	280	19	95	✓	A 4.82 €
B-ZY8-30-15/SS	M8	30	15	20	525	400	58	140	✓	A 5.93 €
B-ZY8-30-20/SS	M8	30	20	20	235	400	42	140	✓	A 5.65 €
B-ZY8-30-25/SS	M8	30	25	20	-	-	-	-	✓	A 6.60 €
B-ZY8-30-30/SS	M8	30	30	20	113	400	28	140	✓	A 6.70 €
B-ZY8-30-40/SS	M8	30	40	20	106	400	13	140	✓	A 7.26 €
B-ZY8-40-25/SS	M8	40	25	23	-	-	-	-	✓	A 7.87 €
B-ZY8-40-30/SS	M8	40	30	23	234	650	49	250	✓	A 8.25 €
B-ZY8-40-40/SS	M8	40	40	23	147	650	23	250	-	A 9.68 €
B-ZY10-40-30/SS	M10	40	30	28	-	-	-	-	✓	A 9.09 €
B-ZY10-50-20/SS	M10	50	20	28	857	1000	110	400	✓	A 12.64 €
B-ZY10-50-25/SS	M10	50	25	28	-	-	-	-	✓	A 12.86 €
B-ZY10-50-30/SS	M10	50	30	28	395	1000	73	400	✓	A 12.63 €
B-ZY10-50-40/SS	M10	50	40	28	273	1000	58	400	✓	A 13.88 €
B-ZY10-50-45/SS	M10	50	45	28	-	-	-	-	✓	A 13.72 €
B-ZY10-50-50/SS	M10	50	50	28	210	1000	37	400	✓	A 15.44 €
B-ZY10-60-40/SS	M10	60	40	28	-	-	-	-	-	A 18.20 €
B-ZY10-70-45/SS	M10	70	45	28	-	-	-	-	-	A 26.69 €
B-ZY12-60-40/SS	M12	60	40	33	-	-	-	-	✓	B 17.16 €
B-ZY12-75-25/SS	M12	75	25	37	-	-	-	-	✓	B 20.67 €
B-ZY12-75-40/SS	M12	75	40	37	735	2300	118	850	✓	B 22.75 €
B-ZY12-75-50/SS	M12	75	50	37	530	2300	101	850	-	B 26.87 €
B-ZY12-75-55/SS	M12	75	55	37	417	2300	78	850	-	B 27.38 €
B-ZY16-100-40/SS	M16	100	40	41	2160	4200	283	1600	-	B 48.53 €
B-ZY16-100-55/SS	M16	100	55	41	892	4200	145	1600	-	B 53.30 €
B-ZY16-100-60/SS	M16	100	60	41	843	4200	142	1600	-	B 54.88 €
B-ZY16-100-75/SS	M16	100	75	41	-	-	-	-	-	B 63.64 €

*Depending on availability - Dimensions in mm

Our other products



OP7

Mechanical digital position indicator, 5 numbers



ACL-FPA

Panel mounting block for aluminium structures, Angular connector



ZHG6

Plastic spur gear, Machined plastic (delrin)



NPTR_M

Adjustable cross clamp, Adjustable



SRG

Adjustable latch clamp with strike plate, Stroke from 117,4mm to 128mm



SDB

Locking bolt support bracket, Mounting holes at 90° to locating bolt



Q7

Angular contact ball bearing, Steel



RJA10_03

Sealing strip, Clamping



ZB

Shaft for linear guides, Hardened



LR

Precision locknut, Precision locknut



NRV

Orthogonal support clamp, Orthogonal



GE_ES_2RS

Spherical bushing, Steel / steel with seals

Complementary products



BZY

Cylindrical elasto mount, Steel



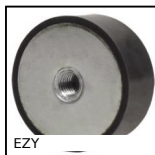
AZY_SS

Stainless steel cylindrical elasto mount, Stainless steel



AZY

Cylindrical elasto mount, Steel



EZY

Cylindrical stop, Steel