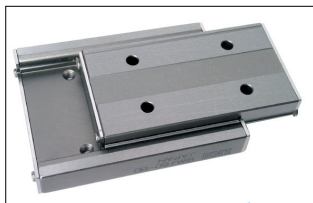


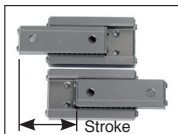
- **Non recirculating ball type precision linear slide**
- Compact linear guide
- Limited stroke length
- 2 rows of balls
- Each ball is in contact with the 4 point slide
- Smooth and accurate movement
- Accepts fluctuating and complex loads
- Corrosion-resistant
- Max. speed: 3m/s
- Max. working temperature: +140°C (above +100°C, certain dimensions can change and the life expectancy may be reduced).



stainless steel
no plastic

Applications

- Clean rooms
- Medical environments



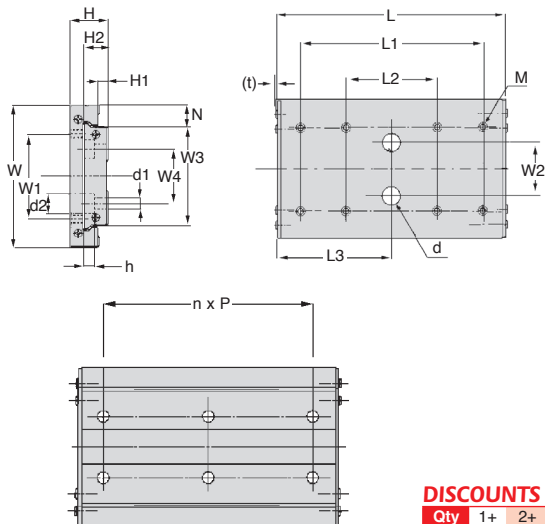
Stroke up to 66mm

Nominal dimensions (mm)

Table dimensions (mm)

Part number	Table Frame		W	H	H1	N	L	Max. stroke				No. of holes M	M. max. depth threaded hole					
	(g)	(g/m)						W1	L1	L2	L3		W2	L3	d	t		
BWU25-45	41,60	24,30	25	9	1,80	5,50	45	26	10	25	-	4	M3	3,00	-	-	-	0,90
BWU25-60	55,70	33,00	25	9	1,80	5,50	60	36	10	25	-	4	M3	3,00	-	-	-	0,90
BWU25-75	68,40	40,80	25	9	1,80	5,50	75	46	10	55	25	8	M3	3,00	-	37,50	6,50	0,90
BWU30-45	56,90	45,40	30	12	3,40	6,00	45	28	14	25	-	4	M3	3,50	-	-	-	1,00
BWU30-60	76,10	61,50	30	12	3,40	6,00	60	34	14	25	-	4	M3	3,50	-	-	-	1,00
BWU30-75	93,80	76,10	30	12	3,40	6,00	75	46	14	55	25	8	M3	3,50	-	37,50	6,50	1,00
BWU40-60	125,00	93,00	40	14	3,50	8,00	60	38	20	40	-	4	M4	4,50	-	-	-	1,00
BWU40-80	167,00	125,00	40	14	3,50	8,00	80	46	20	40	-	4	M4	4,50	-	-	-	1,00
BWU40-100	207,00	155,00	40	14	3,50	8,00	100	62	20	80	40	8	M4	4,50	-	50,00	8,00	1,00
BWU60-60	195,00	194,00	60	16	3,60	9,00	60	32	36	40	-	4	M4	5,00	-	-	-	1,10
BWU60-80	261,00	261,00	60	16	3,60	9,00	80	44	36	40	-	4	M4	5,00	-	-	-	1,10
BWU60-100	321,00	325,00	60	16	3,60	9,00	100	54	36	80	40	8	M4	5,00	23	50,00	8,00	1,10
BWU60-120	286,00	391,00	60	16	3,60	9,00	120	66	36	100	40	8	M4	5,00	23	60,00	8,00	1,10

*Depending on availability - Dimensions in mm



DISCOUNTS

Qty	1+	2+	4+
Disc.	List	-6%	On request

Frame dimensions (mm)									Dynamic load C (N)	Static load C (N)	Max. load F (N)	Static moment T ₀ (Nm)	Price each
W3	H2	W4	n	P	No. of holes	d1	d1	d2					
14	5,20	-	1	30	2	3,50	6,00	3,20	927	1510	504	11,3	✓ 157,94 €
14	5,20	-	1	30	2	3,50	6,00	3,20	1150	2060	688	15,4	- On request
14	5,20	-	2	30	3	3,50	6,00	3,20	1360	2610	871	19,5	- On request
18	7,50	-	1	30	2	3,50	6,50	4,50	1480	2200	733	20,9	- On request
18	7,50	-	1	30	2	3,50	6,50	4,50	1820	3180	1060	30,2	- On request
18	7,50	-	2	30	3	3,50	6,50	4,50	2220	3910	1300	37,2	- On request
24	8,50	-	1	40	2	4,50	8,00	4,50	2390	3440	1150	43,3	- On request
24	8,50	-	1	40	2	4,50	8,00	4,50	3090	4970	1660	62,6	- On request
24	8,50	-	2	40	3	4,50	8,00	4,50	3580	6110	2040	77,0	- On request
42	10,00	23	1	40	4	4,50	8,00	4,50	3660	4930	2640	107,0	- On request
42	10,00	23	1	40	4	4,50	8,00	4,50	4570	6780	2260	148,0	- On request
42	10,00	23	2	40	6	4,50	8,00	4,50	5410	8630	2880	188,0	- On request
42	10,00	23	2	40	6	4,50	8,00	4,50	6200	10500	3490	228,0	- On request

*Depending on availability - Dimensions in mm

Our other products



PRF_FIX_STD

Fastener for aluminium profile, Standard fastener



FF10

Offset spur gear reducer, from 0.78 to 3.70 Nm



G3-ECO

Eco range Spur gear, Steel C45



VPSS

Small 6 lobe threaded handle - male, Duroplast - Stainless steel



BSM_LOK

Long-Lok spring plunger with internal hexagonal socket, LONG-LOK - s...



PRF-SMA

Closing system for aluminium profile, Easily adjustable lock



HTD8M_20

HTD Heavy duty timing pulley, HTD8 Cast



GB-RA

Brass spur gear, Brass CuZn39Pb3



DBL820

Idler for slat top chain, Ranges 820



ZDB

Machined plastic bevel gear, 2:1



DOM180

Accessories, Turntable



HSE-HSB

Hexagonal spacer, Steel

Complementary products



BSP

Compact precision slide, from 156 N to 980 N