

- Universal tensioner arm for applications in hostile environments

- Angle of rotation +/- 32°
- Can be mounted in any position
- Used with PTR/SS chain tensioners
- Working temp range -42 to +80°C
- Materials :

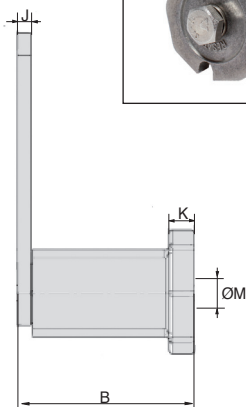
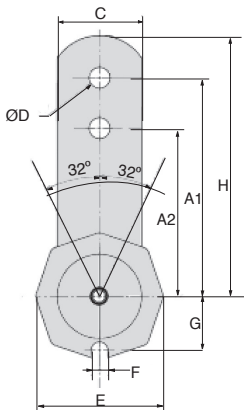
Body stainless steel X5 crNi 18-10

Arm : stainless steel 304L

Screw : stainless steel A2

For hostile environments

stainless steel



DISCOUNTS

Qty	1+	3+	5+
Disc.	List	-10%	On request

Part number	A1	A2	B	C	ØD	E	F	G	H	J	K	ØM	Tightening Force (N)		Weight (kg)	Price each	
													force	0-32°			
BTE2-M6/SS	80	60	52	20	8,5	38	8	16	90,0	5	7	M6	10	0-90	0-110	0,210	51,91 €
BTE3-M8/SS	100	80	63	25	10,5	48	8,5	21	112,5	5	10	M8	24	0-140	0-170	0,380	66,73 €
BTE4-M10/SS	100	80	78	30	10,5	59	8,5	25	115,0	6	12	M10	48	0-320	0-430	0,620	103,85 €
BTE5-M12/SS	130	100	108	50	12,5	76	10,5	34	155,0	8	15	M12	82	0-820	0-1050	1,700	185,51 €
BTE6-M16/SS	175	140	140	60	20,5	92	12,5	41	205,0	10	17	M16	199	0-1500	0-1880	3,420	278,29 €

Dimensions in mm

Our other products



ZAmP

Shaft for linear guides, Hardened ground steel



DB

Steel bevel gear, 2:1



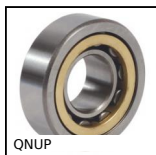
TCC

Rigging screw (hook/hook), Steel



CHM63

Worm and wheel gear reducer, up to 196 Nm



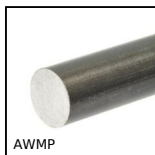
QNUP

Single row cylindrical roller bearing, 1 fixed inner flange and 1 fr...



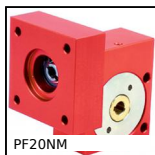
MDB_MTB

Moulded plastic bevel gear (nylon), 2:1



AWMP

Aluminium shaft for linear guide, Aluminium



PF20NM

Worm and wheel gear reducer, up to 5 Nm



H2

Crossed helical gear crossed axis at 90°, Steel 20NCD2



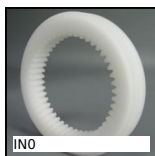
MSP3815

Masterplate® glueable insert rectangular,



GE_ES

Spherical bushing, Steel / steel



INO

Internal gear, Machined plastic (delrin)

Complementary products



PTRSS

Idler chain sprocket, For hostile environments



GTCCS

Belt tensioner, For use in hostile environments



BTE

Universal tension arm, For standard applications



PC5375S

Chain sprocket - Stainless steel, 9.525 (DIN 06B-1)