

Stainless steel cap for square tube

BTCW

To be welded

- Cap for welding to square

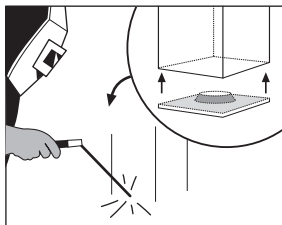
- Material:

Stainless steel (304)

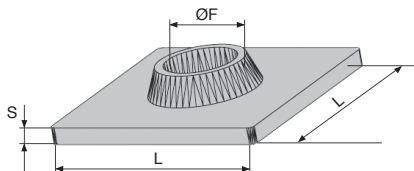
Advantages

- Corrosion resistant

- Shock resistant



Typical application



New sizes

DISCOUNTS

Qty	1+	60+	100+	200+
Disc.	List	-5%	-10%	On request

Part number	L	S	ØF	Stock*	Price each 1 to 59
BTCW35-35-M12/SS	35	3	M12	-	4,67 €
BTCW35-35-M16/SS	35	3	M16	-	3,76 €
BTCW35-35-M20/SS	35	3	M20	-	4,40 €
BTCW40-40-M12/SS	40	3	M12	-	4,85 €
BTCW40-40-M16/SS	40	3	M16	✓	4,40 €
BTCW40-40-M20/SS	40	3	M20	✓	5,07 €
BTCW50-50-M12/SS	50	3	M12	-	5,84 €
BTCW50-50-M16/SS	50	3	M16	✓	5,33 €
BTCW50-50-M20/SS	50	3	M20	✓	6,02 €
BTCW60-60-M12/SS	60	3	M12	-	6,98 €
BTCW60-60-M16/SS	60	3	M16	-	6,24 €
BTCW60-60-M20/SS	60	3	M20	-	6,93 €

Dimensions in mm

Our other products



BLHB60

Right angled gearbox, bored shafts, up to 70 Nm



TCC

Rigging screw (hook/hook), Steel



PARF80

Pressed steel base rigid foot, Swivelling - Ø80



ACLBT5

Closing system for aluminium profile, Spacer for spherical ended stop



PLC_PLT

Magnetic stud with central hole, With central hole



YG2

HEAVY DUTY spur gear, Steel 35NCD6



RBGtc

Swivel castor with central hole, Steel - grey rubber



STRIPF

Sealing brush strip, 1m length



PTA100

Articulated levelling foot, pressed base



PCLA_T

Technopolymer clamping lever - male,



PTA40

Articulated foot with solid base foot Ø 40,



CHAPAM

Weld-on hinge with flat end, Steel

Complementary products



BPTRW

Cap for round tube to be welded, To be welded



BTC_M

End cap with threaded insert for square tube, With threaded insert