

# Stainless steel cap for square tube

## BTCW

## To be welded

- Cap for welding to square

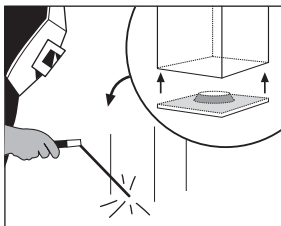
- Material:

Stainless steel (304)

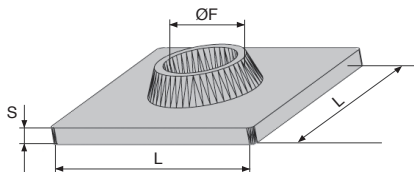
### Advantages

- Corrosion resistant

- Shock resistant



Typical application



New sizes

### DISCOUNTS

Qty	1+	60+	100+	200+
Disc.	List	-5%	-10%	On request

Part number	L	S	ØF	Stock*	Price each 1 to 59
BTCW35-35-M12/SS	35	3	M12	-	4,67 €
BTCW35-35-M16/SS	35	3	M16	-	3,76 €
BTCW35-35-M20/SS	35	3	M20	-	4,40 €
BTCW40-40-M12/SS	40	3	M12	-	4,85 €
BTCW40-40-M16/SS	40	3	M16	✓	4,40 €
BTCW40-40-M20/SS	40	3	M20	✓	5,07 €
BTCW50-50-M12/SS	50	3	M12	-	5,84 €
BTCW50-50-M16/SS	50	3	M16	✓	5,33 €
BTCW50-50-M20/SS	50	3	M20	✓	6,02 €
BTCW60-60-M12/SS	60	3	M12	-	6,98 €
BTCW60-60-M16/SS	60	3	M16	-	6,24 €
BTCW60-60-M20/SS	60	3	M20	-	6,93 €

Dimensions in mm

**HPC**

WEB  
04/2020

www.hpceurope.com

Tél: 0 825 88 5000 Service 0,15 €/min + prix appel

## Our other products



MDR

Dee shackle with eye bolt, Steel



ALIDRP240

24V DC power supply, 10 A



T5P\_T10P

Connecting plate for T type timing belts, T10



ADL\_M

Male eye bolt conforms to DIN580, Steel



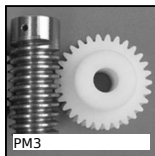
PCF2

Conical flexible mount, Oval base plate



SH0

Parallel axis helical gear, Machined plastic (delrin)



PM3

Worm and wheel set, Machined plastic (delrin)



GET-AL

Jaw coupling, economy range, Aluminium



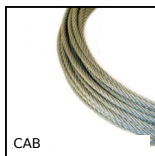
T5-BAR

T type tooth bar stock, T5



M1

Worm and wheel set, Bronze



CAB

Galvanised steel cable, Galvanised steel



HCSS

Set screw with hexagonal socket, Cup point

## Complementary products



BTC\_M

End cap with threaded insert for square tube, With threaded insert