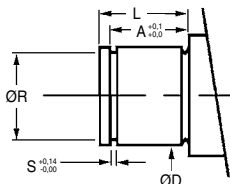


Housing block for ballscrew

BSB
RPB

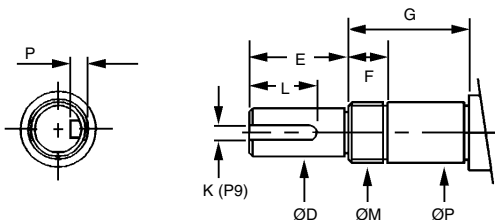
Possible machining options

The ballscrews will require machining (by the user) before they can be used with the BSB and RPB housings



Recommended dimensions for the ends of the ballscrew

For housing block Part number	ØD (g6)	A	ØR	S	L
BSB10	8	7,90	7,6	0,90	11
BSB12	10	9,15	9,6	1,15	12
BSB15	15	10,15	14,3	1,15	12
BSB17	17	13,15	16,2	1,15	16
BSB20	20	13,35	19,0	1,35	16
BSB25	25	16,35	23,9	1,35	20
BSB30	30	17,75	28,6	1,75	20
BSB40	40	19,75	38,0	1,75	25



For housing block Part number	ØP (g6)	ØM	ØD (h6)	K	P	E	F	G	L
RPB10	10	M10x1,0	8	2	1,25	15	16	39	11
RPB12	12	M12x1,0	10	3	1,85	15	16	39	30
RPB15	15	M15x1,0	12	4	2,55	20	16	41	21
RPB17	17	M17x1,0	15	5	3,05	27	17	53	21
RPB20	20	M20x1,0	17	5	3,05	27	17	53	30
RPB25	25	M25x1,5	20	6	3,55	36	18	65	34
RPB30	30	M30x1,5	25	8	4,10	42	18	72	40
RPB40	40	M40x1,5	35	10	5,10	70	35	98	49

Dimensions in mm

HPC

WEB
04/2020

www.hpceurope.com

Tél: 0 825 88 5000 Service 0,15 €/min + prix appel

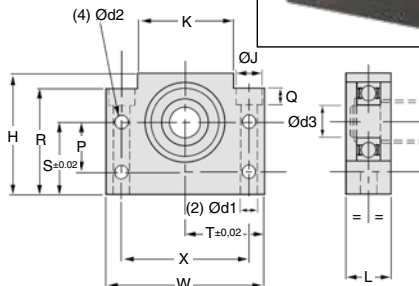
- Free bearing
- Supplied with a radial contact ball bearing
- Material: steel

Assembly

- See end of section for recommended machining options

Accessories

- KGS ballscrews



DISCOUNTS

Qty	1+	2+	4+
Disc.	List	-15%	On request

Part number	For ballscrew Ø	Shaft Ød3 (h7)	W	H	S±0.02	Bearing	Dynamic load (kN)	
							Axial	Radial
BSB10	16	8	60	39	22	608ZZ	-	3,35
BSB12	16 / 20	10	60	43	25	6000ZZ	-	4,65
BSB15	20	15	70	48	28	6002ZZ	-	5,7
BSB17	20 / 25	17	86	64	39	6203ZZ	-	9,75
BSB20	25	20	88	60	34	6004ZZ	-	9,55
BSB25	32	25	106	80	48	6205ZZ	-	14,3
BSB30	40	30	128	89	51	6206ZZ	-	19,8
BSB40	50	40	160	110	60	6208ZZ	-	29,7

Part number	R	X	K	Ød1	ØJ	Q	Ød2	P	L	Stock*	Price each
											€
BSB10	32,5	46	34	6,6	11,0	5,0	5,5	15	20	-	74,25 €
BSB12	35,0	46	35	6,6	11,0	6,5	5,5	18	20	✓	86,98 €
BSB15	38,0	54	40	6,6	11,0	6,5	5,5	18	20	✓	82,33 €
BSB17	55,0	68	50	9,0	14,0	8,5	6,6	28	23	✓	97,38 €
BSB20	50,0	70	52	9,0	14,0	8,5	6,6	22	26	✓	105,10 €
BSB25	70,0	85	64	11,0	17,5	11,0	9,0	33	30	-	124,80 €
BSB30	78,0	102	76	14,0	20,0	13,0	11,0	33	32	-	140,22 €
BSB40	90,0	130	100	18,0	26,0	17,5	14,0	37	37	-	217,91 €

*Depending on availability - Dimensions in mm

Ballscrew bearing unit



RPB

For rigid assemblies

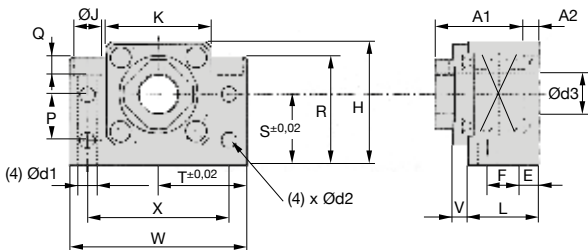
- Fixed bearing
- Fitted with an angular contact bearing
- Material: steel

Assembly

- See end of section for recommended machining options

Accessories

- KGS ballscrews
- Joint



DISCOUNTS

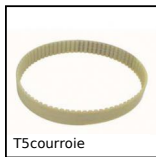
Qty	1+	2+	4+
Disc.	List	-15%	On request

Part number	For Shaft ballscrew $\varnothing d3$								Dynamic load (kN)		
	\varnothing	$(h7)$	W	H	S	R	T	X	Bearing	Axial	Radial
RPB10	16	10	60	39	22	32,5	30	46	7000DFA	6,7	2,78
RPB12	16 / 20	12	60	43	25	32,5	30	46	7001DFA	7,25	3,1
RPB15	20	15	70	48	28	38,0	35	54	7002DFA	7,75	4,07
RPB17	20 / 25	17	86	64	39	55,0	43	68	7203DFA	14	5,95
RPB20	25	20	88	60	34	50,0	44	70	7204DFA	18,3	9,7
RPB25	32	25	106	80	48	70,0	53	85	7205DFA	20,6	11,7
RPB30	40	30	128	89	51	78,0	64	102	7206DFA	28,6	16,6
RPB40	50	40	160	110	60	90,0	80	130	7208DFA	45	27,7

Part number	K	L	E	F	V	A1	A2	$\varnothing d1$	$\varnothing J$	Q	$\varnothing d2$	P	Stock*	Price each
RPB10	34	25	6	13	5	29	5	6,6	11,0	5,0	5,5	15	-	159,65 €
RPB12	35	25	6	13	5	29	5	6,6	11,0	6,5	5,5	18	✓	182,94 €
RPB15	40	27	6	15	6	32	6	6,6	11,0	6,5	5,5	18	✓	198,20 €
RPB17	50	35	8	19	9	44	7	9,0	14,0	8,5	6,6	28	-	271,57 €
RPB20	52	35	8	19	8	43	8	9,0	14,0	8,5	6,6	22	✓	243,01 €
RPB25	64	42	10	22	12	54	9	11,0	17,5	11,0	9,0	33	-	291,31 €
RPB30	76	45	11	23	14	61	9	14,0	20,0	13,0	11,0	33	-	386,13 €
RPB40	100	61	14	33	18	76	15	18,0	26,0	17,5	14,0	37	-	484,66 €

*Depending on availability - Dimensions in mm

Our other products



T5courroie

T type timing belt, T5
Steel cored
polyurethane



AT10-25ECO

AT type timing pulley,
Economy range -
AT10 aluminium



PRFSRAD

Dual lock for
aluminium profile,
Quick fitting, self
locking door du...



PSG08

Spur gear - precision
range, Case hardened
steel 20NCD2



ADL_F

Female eye bolt
conforms to DIN582,
Stainless steel



DOMI50

Accessories, Fixing kit



RFK28B

Hypoid gearbox -
Stainless steel, up to
130 Nm



TFR

Rigid manual
tensioner, Fixed



BPQ

Quadro linear ball
bearing unit, Included



MAX26

Motor-gearbox 12V
and 24V DC, from



ACLBT5

Closing system for
aluminium profile,



METEB

Self-lubricating
blanks, Bronze BP25

Complementary products



KGS

Ballscrew, supplied by
the metre, Rolled
ballscrew, per metre



RPB

Ballscrew bearing
unit, Support