

## BPVM

## Fluid displacement

- **Ball caster for positioning and aligning parts**
- The ball rolls durably on the sliding bearing
- The surface of the part is preserved
- Working temperature: -50°C to +90°C
- The load capacity decreases linearly at temperatures > 20°C.  
(Example: at 90°C, the load capacity is 60% max.)
- Materials:  
Burnished steel screw and steel ball bearing  
Plain bearing: polyurethane

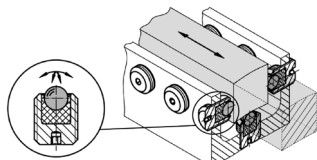
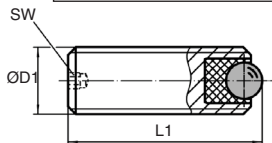
### Applications

- Enables low-friction guidance
- ⚠ **Not suitable for indexing!**

### Advantage

- Adjusting the position of the carrier ball from the rear.

**NEW !**



Typical application

### DISCOUNTS

Qty	1+	6+	20+	40+	60+
Disc. Price	-10%	-15%	-20%	On request	

Part number	ØD1	L1	Ball ØD	SW	Max. tightening torque (Nm)	Max load capacity for static use (N)	Weight (g)	Price each 1 to 5
BPVM6-8	M6	8	2,5	1,5	0,1	172	1	13,35 €
BPVM6-16	M6	16	2,5	1,5	0,1	172	3	13,35 €
BPVM8-10	M8	10	3,5	1,5	0,3	336	3	13,43 €
BPVM8-20	M8	20	3,5	1,5	0,3	336	7	13,43 €
BPVM10-12	M10	12	4,5	2,0	0,6	556	5	13,54 €
BPVM10-25	M10	25	4,5	2,0	0,6	556	13	13,54 €
BPVM12-16	M12	16	6,5	2,5	1,4	1161	10	14,14 €
BPVM12-35	M12	35	6,5	2,5	1,4	1161	27	14,14 €
BPVM16-20	M16	20	8,5	3,0	3,2	1986	24	16,98 €
BPVM16-50	M16	50	8,5	3,0	3,2	1986	71	16,98 €

Dimensions in mm

- Ball caster for positioning and orienting parts
- The ball rolls durably on the sliding bearing
- The surface of the part is preserved
- Working temperature: -50°C to +90°C
- The load capacity decreases linearly at temperatures > 20°C..  
(Example: at 90°C, the load capacity is 60% max.)

- Materials:

Screw stainless steel 303 hardened stainless steel ball

Plain bearing: polyurethane

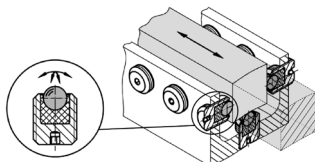
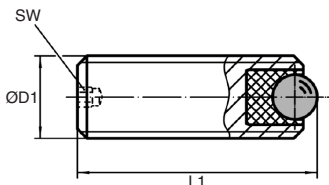
### Applications

- Enables low-friction guidance
- ⚠ **Not suitable for indexing!**

### Advantage

- Adjusting the position of the carrier ball from the rear.

**NEW!**  
Stainless Steel



Typical application

### DISCOUNTS

Qty	1+	6+	20+	40+	60+
Disc.	Price	-10%	-15%	-20%	On request

Part number	Ball		Max. tightening torque (Nm)	Max load capacity for static use (N)	Weight (g)	Price each 1 to 5		
	ØD1	L1					ØD	SW
BPVM6-8/SS	M6	8	2,5	1,5	0,1	172	1	18,72 €
BPVM6-16/SS	M6	16	2,5	1,5	0,1	172	3	18,72 €
BPVM8-10/SS	M8	10	3,5	1,5	0,3	336	3	18,83 €
BPVM8-20/SS	M8	20	3,5	1,5	0,3	336	7	18,83 €
BPVM10-12/SS	M10	12	4,5	2,0	0,6	556	5	18,96 €
BPVM10-25/SS	M10	25	4,5	2,0	0,6	556	13	18,96 €
BPVM12-16/SS	M12	16	6,5	2,5	1,4	1161	10	19,81 €
BPVM12-35/SS	M12	35	6,5	2,5	1,4	1161	27	19,81 €
BPVM16-20/SS	M16	20	8,5	3,0	3,2	1986	24	23,78 €
BPVM16-50/SS	M16	50	8,5	3,0	3,2	1986	71	23,78 €

Dimensions in mm

# Mini plain bearing ball transfer unit **New Size XS**

## BPPL

## For countersinking

- **Plain bearing ball caster**
- Maintenance free
- Working temperature: -50°C to +90°C
- The load capacity decreases linearly at temperatures > 20°C.  
(Example: at 90°C, the load capacity is 60% max.)
- Materials:
  - Case: Stainless steel
  - Plan bearing: polyurethane
  - Ball: Hardened stainless steel

### Advantage

- The knurled outside allows easy fitting into the holes of additional preparation.

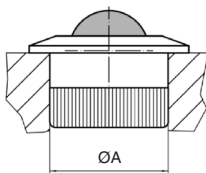
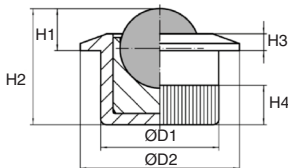
### Assembly

- Fastening is done by pushing the carrier ball with knurled outside
- The carrier balls can be fitted with **BPPL/TOOL** mounting tools.

### Application

- Transport, conveyor, workstation and packaging systems.

**NEW!**



Mounting tool

### DISCOUNTS

Qty	1+	6+	20+	40+	60+
Disc. Price	-10%	-15%	-20%	On request	

Part number	Ball		H1	H2	H3	H4	ØA (H7) Hole	Load capacity (kg)	Weight (g)	Price each 1 to 5
	ØD	ØD1								

#### Mini carrier ball

BPPL6-10	6,5	10,0	13	3,2	11,2	1,2	4,2	10,0	116	4	12,29 €
BPPL8-12	8,5	12,6	17	4,5	12,4	1,8	4,2	12,6	198	8	13,35 €

#### Mounting tool

BPPL6-10/TOOL	For carrier ball BPPL6-10		118		25,42 €
BPPL8-12/TOOL	For carrier ball BPPL8-12		125		25,42 €

Dimensions in mm

## Our other products



NDS20  
Double cross clamp,  
Crossed



CHM63-MOT  
Asynchronous AC  
motorgearboxes 0.37  
to 1.5kW, 0.37 to  
1.5kW



ERC  
Quick fitting cable  
terminal, Fork



SH55  
Shoulder screw  
stainless steel 416,  
Pre-treated 416  
stainless steel



BCM\_CC  
Modular cylindrical  
brush, Horsehair  
bristles



VQT  
Quarter-turn clamp  
lock, Plastic or  
stainless steel button



BPFss  
Pressed stainless  
steel flange bearing,  
Stainless steel



PW\_PWG15  
Worm - precision  
range, Steel



TBD  
Manual leadscrew  
table with opposing



SEV  
Vertical stirrup toggle  
clamp, Vertical Latch



DOMI30  
Accessories, Fixing kit



BLHT60  
Right angled gearbox,  
from 26 to 70 Nm

## Complementary products



BPVM  
Miniature ball transfer  
unit, Miniature to  
screw



BPPL  
Mini plain bearing ball  
transfer unit, For  
countersinking



BPPL  
Assembly tool for  
carrier ball, Mounting  
tool