

BPVM

Fluid displacement

- **Ball caster for positioning and aligning parts**
- The ball rolls durably on the sliding bearing
- The surface of the part is preserved
- Working temperature: -50°C to +90°C
- The load capacity decreases linearly at temperatures > 20°C.
(Example: at 90°C, the load capacity is 60% max.)
- Materials:
Burnished steel screw and steel ball bearing
Plain bearing: polyurethane

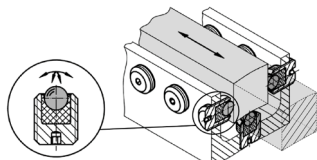
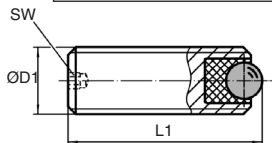
Applications

- Enables low-friction guidance
- ⚠ **Not suitable for indexing!**

Advantage

- Adjusting the position of the carrier ball from the rear.

NEW !



Typical application

DISCOUNTS

Qty	1+	6+	20+	40+	60+
Disc. Price	-10%	-15%	-20%	On request	

Part number	ØD1	L1	Ball ØD	SW	Max. tightening torque (Nm)	Max load capacity for static use (N)	Weight (g)	Price each 1 to 5
BPVM6-8	M6	8	2,5	1,5	0,1	172	1	13,35 €
BPVM6-16	M6	16	2,5	1,5	0,1	172	3	13,35 €
BPVM8-10	M8	10	3,5	1,5	0,3	336	3	13,43 €
BPVM8-20	M8	20	3,5	1,5	0,3	336	7	13,43 €
BPVM10-12	M10	12	4,5	2,0	0,6	556	5	13,54 €
BPVM10-25	M10	25	4,5	2,0	0,6	556	13	13,54 €
BPVM12-16	M12	16	6,5	2,5	1,4	1161	10	14,14 €
BPVM12-35	M12	35	6,5	2,5	1,4	1161	27	14,14 €
BPVM16-20	M16	20	8,5	3,0	3,2	1986	24	16,98 €
BPVM16-50	M16	50	8,5	3,0	3,2	1986	71	16,98 €

Dimensions in mm

- **Ball caster for positioning and orienting parts**
- The ball rolls durably on the sliding bearing
- The surface of the part is preserved
- Working temperature: -50°C to +90°C
- The load capacity decreases linearly at temperatures > 20°C..
(Example: at 90°C, the load capacity is 60% max.)

- Materials:

Screw stainless steel 303 hardened stainless steel ball

Plain bearing: polyurethane

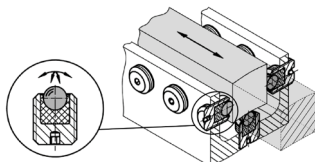
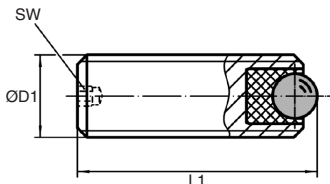
Applications

- Enables low-friction guidance
- ⚠ **Not suitable for indexing!**

Advantage

- Adjusting the position of the carrier ball from the rear.

NEW!
Stainless Steel



Typical application

DISCOUNTS

Qty	1+	6+	20+	40+	60+
Disc.	Price	-10%	-15%	-20%	On request

Part number	ØD1	L1	Ball		Max. tightening torque (Nm)	Max load capacity for static use (N)	Weight (g)	Price each 1 to 5
			ØD	SW				
BPVM6-8/SS	M6	8	2,5	1,5	0,1	172	1	18,72 €
BPVM6-16/SS	M6	16	2,5	1,5	0,1	172	3	18,72 €
BPVM8-10/SS	M8	10	3,5	1,5	0,3	336	3	18,83 €
BPVM8-20/SS	M8	20	3,5	1,5	0,3	336	7	18,83 €
BPVM10-12/SS	M10	12	4,5	2,0	0,6	556	5	18,96 €
BPVM10-25/SS	M10	25	4,5	2,0	0,6	556	13	18,96 €
BPVM12-16/SS	M12	16	6,5	2,5	1,4	1161	10	19,81 €
BPVM12-35/SS	M12	35	6,5	2,5	1,4	1161	27	19,81 €
BPVM16-20/SS	M16	20	8,5	3,0	3,2	1986	24	23,78 €
BPVM16-50/SS	M16	50	8,5	3,0	3,2	1986	71	23,78 €

Dimensions in mm

Mini plain bearing ball transfer unit **New Size XS**

BPPL

For countersinking

- **Plain bearing ball caster**
- Maintenance free
- Working temperature: -50°C to +90°C
- The load capacity decreases linearly at temperatures > 20°C.
(Example: at 90°C, the load capacity is 60% max.)
- Materials:
 - Case: Stainless steel
 - Plan bearing: polyurethane
 - Ball: Hardened stainless steel

Advantage

- The knurled outside allows easy fitting into the holes of additional preparation.

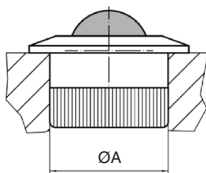
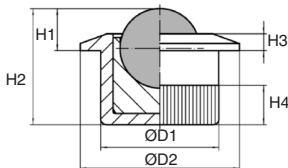
Assembly

- Fastening is done by pushing the carrier ball with knurled outside
- The carrier balls can be fitted with **BPPL/TOOL** mounting tools.

Application

- Transport, conveyor, workstation and packaging systems.

NEW!



Mounting tool

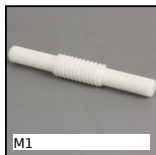
DISCOUNTS

Qty	1+	6+	20+	40+	60+
Disc. Price	-10%	-15%	-20%	On request	

Part number	Ball		H1	H2	H3	H4	ØA (H7) Hole	Load capacity (kg)	Weight (g)	Price each 1 to 5	
	ØD	ØD1									ØD2
Mini carrier ball											
BPPL6-10	6,5	10,0	13	3,2	11,2	1,2	4,2	10,0	116	4	12,29 €
BPPL8-12	8,5	12,6	17	4,5	12,4	1,8	4,2	12,6	198	8	13,35 €
Mounting tool											
BPPL6-10/TOOL									For carrier ball BPPL6-10	118	25,42 €
BPPL8-12/TOOL									For carrier ball BPPL8-12	125	25,42 €

Dimensions in mm

Our other products



Worm and wheel set,
Machined plastic
(delrin)



Spur gear, Moulded
blue plastic (nylon)



Articulated foot with
sheet metal base,
Articulated foot



Reducing sleeve for
OP indicators,
Reduction socket



Ball transfer unit,
Heavy



Decorative
asymmetric screwed
hinges, Polyamide



Bellows cover,
Accessory:



Eco. range steel bevel
gear, 2:1



Miniature motorised
actuator, 4A, 4
amper



Right angle bevel
gearbox, Up to 43Nm



Eco. range steel bevel
gear, 1:1



Sliding lock
adjustment system,
Blocking wedge for
sliding lock for ...

Complementary products



Stainless steel
miniature ball transfer
unit, Miniature to
screw



Mini plain bearing ball
transfer unit, For
countersinking



Assembly tool for
carrier ball, Mounting
tool