

BPVM

Fluid displacement

- **Ball caster for positioning and aligning parts**
- The ball rolls durably on the sliding bearing
- The surface of the part is preserved
- Working temperature: -50°C to +90°C
- The load capacity decreases linearly at temperatures > 20°C.
(Example: at 90°C, the load capacity is 60% max.)
- Materials:
Burnished steel screw and steel ball bearing
Plain bearing: polyurethane

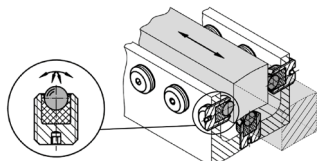
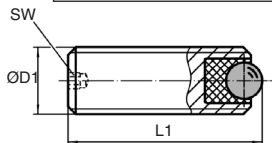
Applications

- Enables low-friction guidance
- ⚠ **Not suitable for indexing!**

Advantage

- Adjusting the position of the carrier ball from the rear.

NEW!



Typical application

DISCOUNTS

Qty	1+	6+	20+	40+	60+
Disc. Price	-10%	-15%	-20%	On request	

Part number	ØD1	L1	Ball ØD	SW	Max. tightening torque (Nm)	Max load capacity for static use (N)	Weight (g)	Price each 1 to 5
BPVM6-8	M6	8	2,5	1,5	0,1	172	1	13,35 €
BPVM6-16	M6	16	2,5	1,5	0,1	172	3	13,35 €
BPVM8-10	M8	10	3,5	1,5	0,3	336	3	13,43 €
BPVM8-20	M8	20	3,5	1,5	0,3	336	7	13,43 €
BPVM10-12	M10	12	4,5	2,0	0,6	556	5	13,54 €
BPVM10-25	M10	25	4,5	2,0	0,6	556	13	13,54 €
BPVM12-16	M12	16	6,5	2,5	1,4	1161	10	14,14 €
BPVM12-35	M12	35	6,5	2,5	1,4	1161	27	14,14 €
BPVM16-20	M16	20	8,5	3,0	3,2	1986	24	16,98 €
BPVM16-50	M16	50	8,5	3,0	3,2	1986	71	16,98 €

Dimensions in mm

- Ball caster for positioning and orienting parts
- The ball rolls durably on the sliding bearing
- The surface of the part is preserved
- Working temperature: -50°C to +90°C
- The load capacity decreases linearly at temperatures > 20°C..
(Example: at 90°C, the load capacity is 60% max.)

- Materials:

Screw stainless steel 303 hardened stainless steel ball

Plain bearing: polyurethane

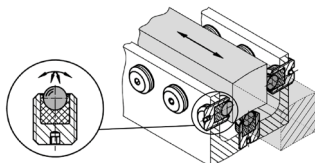
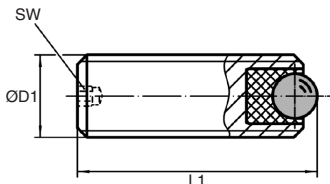
Applications

- Enables low-friction guidance
- ⚠ **Not suitable for indexing!**

Advantage

- Adjusting the position of the carrier ball from the rear.

NEW!
Stainless Steel



Typical application

DISCOUNTS

Qty	1+	6+	20+	40+	60+
Disc.	Price	-10%	-15%	-20%	On request

Part number	ØD1	L1	Ball		Max. tightening torque (Nm)	Max load capacity for static use (N)	Weight (g)	Price each 1 to 5
			ØD	SW				
BPVM6-8/SS	M6	8	2,5	1,5	0,1	172	1	18,72 €
BPVM6-16/SS	M6	16	2,5	1,5	0,1	172	3	18,72 €
BPVM8-10/SS	M8	10	3,5	1,5	0,3	336	3	18,83 €
BPVM8-20/SS	M8	20	3,5	1,5	0,3	336	7	18,83 €
BPVM10-12/SS	M10	12	4,5	2,0	0,6	556	5	18,96 €
BPVM10-25/SS	M10	25	4,5	2,0	0,6	556	13	18,96 €
BPVM12-16/SS	M12	16	6,5	2,5	1,4	1161	10	19,81 €
BPVM12-35/SS	M12	35	6,5	2,5	1,4	1161	27	19,81 €
BPVM16-20/SS	M16	20	8,5	3,0	3,2	1986	24	23,78 €
BPVM16-50/SS	M16	50	8,5	3,0	3,2	1986	71	23,78 €

Dimensions in mm

Mini plain bearing ball transfer unit **New Size XS**

BPPL

For countersinking

- **Plain bearing ball caster**
- Maintenance free
- Working temperature: -50°C to +90°C
- The load capacity decreases linearly at temperatures > 20°C.
(Example: at 90°C, the load capacity is 60% max.)
- Materials:
 - Case: Stainless steel
 - Plan bearing: polyurethane
 - Ball: Hardened stainless steel

Advantage

- The knurled outside allows easy fitting into the holes of additional preparation.

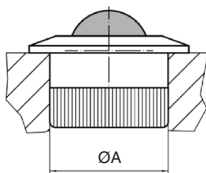
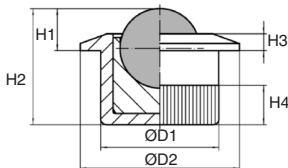
Assembly

- Fastening is done by pushing the carrier ball with knurled outside
- The carrier balls can be fitted with **BPPL/TOOL** mounting tools.

Application

- Transport, conveyor, workstation and packaging systems.

NEW!



Mounting tool

DISCOUNTS

Qty	1+	6+	20+	40+	60+
Disc. Price	-10%	-15%	-20%	On request	

Part number	Ball		H1	H2	H3	H4	ØA (H7) Hole	Load capacity (kg)	Weight (g)	Price each 1 to 5		
	ØD	ØD1									ØD2	
Mini carrier ball												
BPPL6-10	6,5	10,0	13	3,2	11,2	1,2	4,2	10,0	116	4	12,29 €	
BPPL8-12	8,5	12,6	17	4,5	12,4	1,8	4,2	12,6	198	8	13,35 €	
Mounting tool												
BPPL6-10/TOOL										For carrier ball BPPL6-10	118	25,42 €
BPPL8-12/TOOL										For carrier ball BPPL8-12	125	25,42 €

Dimensions in mm

Our other products



PSG15S

Spur gear - precision range, Stainless steel 303



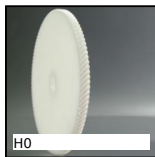
ZHG5

Plastic spur gear, Machined plastic (delrin)



PRF-SRA-78

Lock for aluminium profile, Quick fitting, self locking door lock



H0

Crossed helical gear crossed axis at 90°, Machined plastic (delrin)



BCTH

Mushroom headed button Hygienic Usit®, With female thread and high ...



DOG111

Motor-gearbox 12V and 24V DC, from 1.5 to 6 Nm



WBGV

Lifting ring, Threaded



CM

Tools Hygienic Usit® and Hygienic Design®, Combination spanner



IN1

Internal gear, Steel 20NCD2



ETQ

Magnetic label holder for aluminium profile, 12AB56



G0

Steel spur gear, Steel 20NCD2



BAG

Steel Clamping collar, Steel

Complementary products



BPVMss

Stainless steel miniature ball transfer unit, Miniature to screw



BPPL

Mini plain bearing ball transfer unit, For countersinking



BPPL

Assembly tool for carrier ball, Mounting tool