

# Stainless steel cap for round tube

## BPTRW

### To be welded

- Cap for welding to round tube

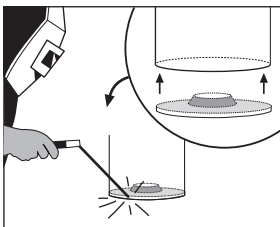
- Material:

Stainless steel (304)

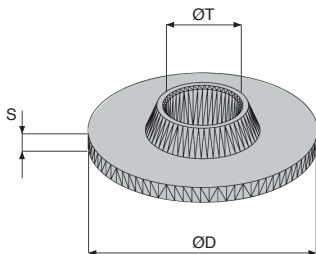
### Advantages

- Corrosion resistant

- Shock resistant



Typical application



### DISCOUNTS

Qty	1+	60+	100+	200+
Disc.	List	-5%	-10%	On request

Part number	ØD	S	ØT	Price each 1 to 59
BPTRW42-M16/SS	42	3	M16	4,42 €
BPTRW42-M20/SS	42	3	M20	5,07 €
BPTRW48-M16/SS	48	3	M16	5,13 €
BPTRW48-M20/SS	48	3	M20	5,70 €
BPTRW50-M16/SS	50	3	M16	6,10 €
BPTRW50-M20/SS	50	3	M20	6,78 €
BPTRW60-M16/SS	60	3	M16	6,78 €
BPTRW60-M20/SS	60	3	M20	7,61 €

Dimensions in mm

**HPC**

WEB  
04/2020

www.hpceurope.com

Tél: 0 825 88 5000 Service 0,15 €/min + prix appel

## Our other products



NSO  
Housing for open linear bearing, Opened - long



BSPT  
Single rod clip, Round



CLG1  
Moulded plastic spur gear, Moulded plastic (nylon)



BSM\_LOK  
Long-Lok spring plunger with internal hexagonal socket, LONG-LOK - s...



MDR  
Dee shackle with eye bolt, Steel



DOMI50  
Accessories, Clamping lever



BSM  
Spring plunger with internal hexagonal socket, steel body and pin



HTD8M\_20  
HTD Heavy duty timing pulley, HTD8 Steel



ACM\_AZ  
Mounting bracket for bonnet fastener, Hook



PTA50  
Articulated levelling foot, pressed base Ø50, Ø 50



RFK38C  
Hypoid gearbox - Stainless steel, up to 200 Nm



PP50  
Worm and wheel gear reducer, from 6.50 to 12.80 Nm

## Complementary products



BTCW  
Cap for square tube to be welded, To be welded



BPTR\_M  
End cap with threaded insert for round tube, With threaded insert