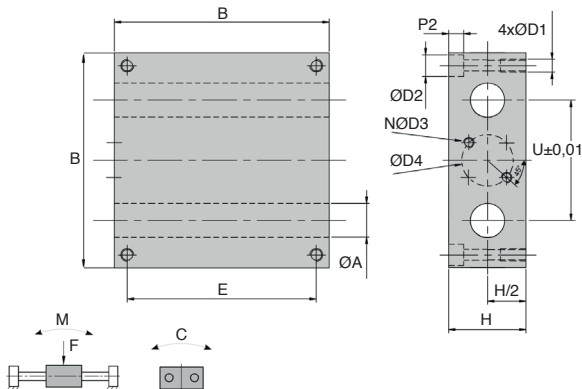
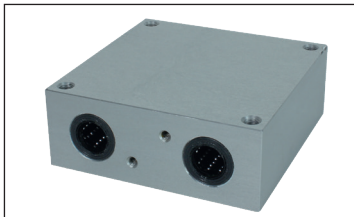


- Block bearings allowing the creation of a linear table with 2 guide shafts
- Supplied with 4 compact linear ball bearings
- Protected with wiper seals
- Working T°: from +5°C to +80°C
- Max speed: 2m/s
- Materials:
 - Housing: anodised aluminium
 - Ball bearing: plastic housing, NBR wipers



Part number	F* (daN)	C* (Nm)	M* (Nm)
BPQ12-4	17 / 10	8 / 5	16 / 10
BPQ16-4	34 / 20	17 / 11	32 / 19
BPQ20-4	64 / 40	29 / 18	55 / 34
BPQ25-4	125 / 80	52 / 30	90 / 60

*load: max values, static / dynamic

DISCOUNTS

Qty	1+	2+	4+
Disc. List	-5%	-	On request

Part number	For shaft										Weight (kg)	Stock*	Price each	
	ØA	B	ØD1	ØD2	ØD3	ØD4	E	H	N	P2				U
BPQ12-4	Ø12	85	M6	10,2	M4	19	73	32	2	7	46	0,53	-	171,38 €
BPQ16-4	Ø16	98	M6	10,2	M5	31	88	36	2	7	56	0,75	-	185,65 €
BPQ20-4	Ø20	130	M8	13,5	M5	31	115	46	2	8	72	1,75	-	236,48 €
BPQ25-4	Ø25	160	M10	17,0	M6	45	140	56	4	11	88	3,20	-	314,50 €

*Depending on availability - Dimensions in mm

Our other products



SSHBRA

Stainless steel bevel gear, 1,5:1 2:1 3:1



HTD5M_09

HTD Heavy duty timing pulley, HTD5 Steel



BABtss

303 Stainless steel ball pin, 303 Stainless steel



ACA

Steel splined shaft, Steel



PFL

P-FLEX Coupling, Set screw



WS16

Drylin® W rail, Rail



ADL_F

Female eye bolt conforms to DIN582, Steel



ES

Bipod support base, Plastic



LSAG

Precision linear rotary ball spline, Rail - from



GFX

Curved tooth coupling, economy



MET

Cylindrical sintered bronze bush, Self-



MHMEP

Arm with rotating handle, Prebored

Complementary products



ZAm

Shaft for linear guides, Hardened ground steel



ZA

Shaft for linear guides, Hardened ground steel



ZB

Shaft for linear guides, Hardened ground stainless steel



SMLS

Linear table, For small lengths