

# Pressed stainless steel bearing for light loads

2 mounting holes

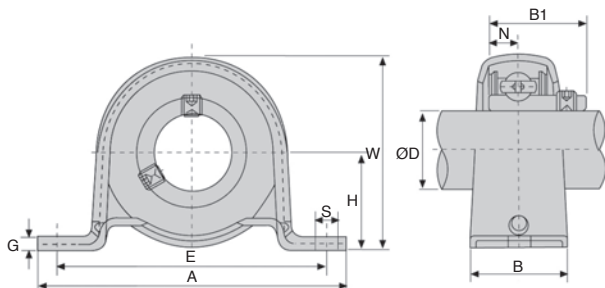
BPPSS

- Pressed sheet steel housing
- Material: stainless steel

**NEW:**  
stainless steel range

## Application

- Mounting a simple bearing, suitable for light loads only



## DISCOUNTS

Qty	1+	6+	20+	40+	60+
Disc.	List	-10%	-15%	-20%	On request

Part number	ØD	H	A	E	B	S	G	W	Bolt size	B1	N	Weight (kg)	Stock*	Price each 1 to 5
BPP204/SS	20	25,4	98	76	32	9	3,2	50	M8	25	7	0,22	✓	18,10 €
BPP205/SS	25	28,6	108	86	32	11	4	56	M10	27	7,5	0,29	✓	24,19 €
BPP206/SS	30	33,3	117	95	38	11	4	66	M10	30	8	0,43	✓	27,74 €
BPP207/SS	35	39,7	129	106	42	11	5	78	M10	32	8,5	0,63	-	52,39 €

Dimensions in mm

**0 825 88 6000**  
Service 0,15 € / min  
+ prix appel

cial2@hpceurope.com

**HPC** SUPPLEMENT 2019

99

## Our other products



HRV

V- rail guidance  
Simple Select®  
system, Rail with  
carriage



RFK58C

Hypoid gearbox -  
Stainless steel, up to  
500 Nm



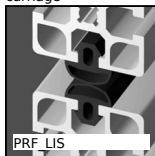
RFVcap

Stainless steel  
protective cover,  
Open protective cover



TBE12

Economic mini-table  
with trapezoidal  
leadscrew, 2kg



PRF LIS

Door seal for  
aluminium profile,  
Black NBR



G0

Steel spur gear, Steel  
20NCD2



PITAss

Locking bolt, with T  
handle



CDC

Conical compression  
spring, Conical



PRF\_CLIP\_45

Cable clip for  
aluminium profile, For



RBGtc

Swivel castor with  
central hole, Steel -



M0

Worm and wheel set,  
Hardened steel



P20

Worm and wheel gear  
reducer, up to 5 Nm

## Complementary products



BPFss

Pressed stainless  
steel flange bearing,  
Stainless steel



BPF Lss

Pressed stainless  
steel flange bearing,  
Stainless steel



BPP

Pressed steel flanged  
bearing for light  
loads, Sheet steel



UCP\_SS

Stainless steel pillow  
block bearing,  
Stainless steel