

# Pressed stainless steel bearing for light loads

2 mounting holes

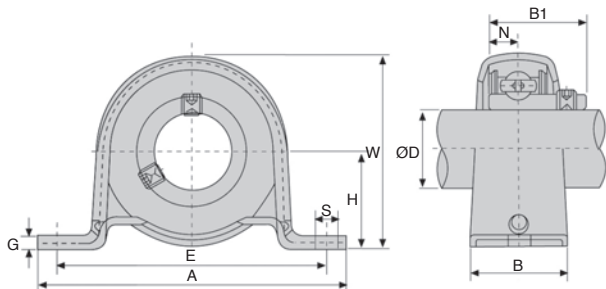
BPPSS

- Pressed sheet steel housing
- Material: stainless steel

## Application

- Mounting a simple bearing, suitable for light loads only

**NEW:**  
stainless steel  
range



## DISCOUNTS

Qty	1+	6+	20+	40+	60+
Disc.	List	-10%	-15%	-20%	On request

Part number	ØD	H	A	E	B	S	G	W	Bolt size	B1	N	Weight (kg)	Stock*	Price each 1 to 5
BPP204/SS	20	25,4	98	76	32	9	3,2	50	M8	25	7	0,22	✓	18,10 €
BPP205/SS	25	28,6	108	86	32	11	4	56	M10	27	7,5	0,29	✓	24,19 €
BPP206/SS	30	33,3	117	95	38	11	4	66	M10	30	8	0,43	✓	27,74 €
BPP207/SS	35	39,7	129	106	42	11	5	78	M10	32	8,5	0,63	-	52,39 €

Dimensions in mm

**0 825 88 6000**  
Service 0,15 € / min  
+ prix appel

cial2@hpceurope.com

**HPC** SUPPLEMENT 2019

99

## Our other products



SH3

Parallel axis helical gear, Steel 20NCD2



UTKpwr

Utilitrak® 3 wheels carriage, Polymer roller carriage



MEB

Moulded plastic bevel gear (nylon), 1:1



BAG-MI

Split shaft collar with clamp lever, Steel



TAC

Rigging screw (hook/eye), Steel



OP3

Mechanical digital position indicator, 4 numbers



UGCG

Actuator guide kit, Long housing



RBG

Wheel, Grey rubber - Polypropylene rim



SVT30

Screwjack with travelling screw, with translating screw



AT10-32ECO

AT type timing pulley, Economy range - AT10 aluminium



ACL-PLAngle

Joining plate for aluminium profile, Angle connection



VEL

Self-gripping cable strip, electric and pneumatic cables

## Complementary products



BPFss

Pressed stainless steel flange bearing, Stainless steel



BPFLss

Pressed stainless steel flange bearing, Stainless steel



BPP

Pressed steel flanged bearing for light loads, Sheet steel



UCP\_SS

Stainless steel pillow block bearing, Stainless steel