

## BPVM

## Fluid displacement

- **Ball caster for positioning and aligning parts**
- The ball rolls durably on the sliding bearing
- The surface of the part is preserved
- Working temperature: -50°C to +90°C
- The load capacity decreases linearly at temperatures > 20°C.  
(Example: at 90°C, the load capacity is 60% max.)
- Materials:  
Burnished steel screw and steel ball bearing  
Plain bearing: polyurethane

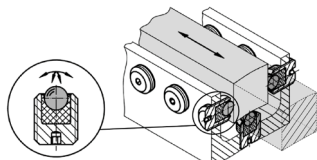
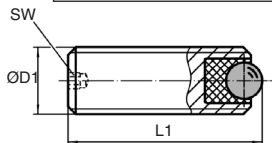
### Applications

- Enables low-friction guidance
- ⚠ **Not suitable for indexing!**

### Advantage

- Adjusting the position of the carrier ball from the rear.

**NEW !**



Typical application

### DISCOUNTS

Qty	1+	6+	20+	40+	60+
Disc. Price	-10%	-15%	-20%	On request	

Part number	ØD1	L1	Ball ØD	SW	Max. tightening torque (Nm)	Max load capacity for static use (N)	Weight (g)	Price each 1 to 5
BPVM6-8	M6	8	2,5	1,5	0,1	172	1	13,35 €
BPVM6-16	M6	16	2,5	1,5	0,1	172	3	13,35 €
BPVM8-10	M8	10	3,5	1,5	0,3	336	3	13,43 €
BPVM8-20	M8	20	3,5	1,5	0,3	336	7	13,43 €
BPVM10-12	M10	12	4,5	2,0	0,6	556	5	13,54 €
BPVM10-25	M10	25	4,5	2,0	0,6	556	13	13,54 €
BPVM12-16	M12	16	6,5	2,5	1,4	1161	10	14,14 €
BPVM12-35	M12	35	6,5	2,5	1,4	1161	27	14,14 €
BPVM16-20	M16	20	8,5	3,0	3,2	1986	24	16,98 €
BPVM16-50	M16	50	8,5	3,0	3,2	1986	71	16,98 €

Dimensions in mm

- Ball caster for positioning and orienting parts
- The ball rolls durably on the sliding bearing
- The surface of the part is preserved
- Working temperature: -50°C to +90°C
- The load capacity decreases linearly at temperatures > 20°C..  
(Example: at 90°C, the load capacity is 60% max.)

- Materials:

Screw stainless steel 303 hardened stainless steel ball

Plain bearing: polyurethane

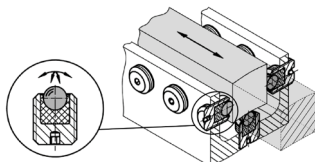
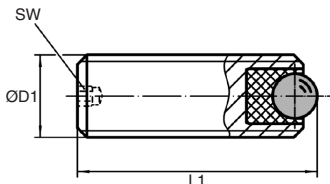
### Applications

- Enables low-friction guidance
- ⚠️ **Not suitable for indexing!**

### Advantage

- Adjusting the position of the carrier ball from the rear.

**NEW!**  
Stainless Steel



Typical application

### DISCOUNTS

Qty	1+	6+	20+	40+	60+
Disc.	Price	-10%	-15%	-20%	On request

Part number	ØD1	L1	Ball		Max. tightening torque (Nm)	Max load capacity for static use (N)	Weight (g)	Price each 1 to 5
			ØD	SW				
BPVM6-8/SS	M6	8	2,5	1,5	0,1	172	1	18,72 €
BPVM6-16/SS	M6	16	2,5	1,5	0,1	172	3	18,72 €
BPVM8-10/SS	M8	10	3,5	1,5	0,3	336	3	18,83 €
BPVM8-20/SS	M8	20	3,5	1,5	0,3	336	7	18,83 €
BPVM10-12/SS	M10	12	4,5	2,0	0,6	556	5	18,96 €
BPVM10-25/SS	M10	25	4,5	2,0	0,6	556	13	18,96 €
BPVM12-16/SS	M12	16	6,5	2,5	1,4	1161	10	19,81 €
BPVM12-35/SS	M12	35	6,5	2,5	1,4	1161	27	19,81 €
BPVM16-20/SS	M16	20	8,5	3,0	3,2	1986	24	23,78 €
BPVM16-50/SS	M16	50	8,5	3,0	3,2	1986	71	23,78 €

Dimensions in mm

# Mini plain bearing ball transfer unit New Size XS

## BPPL

## For countersinking

- **Plain bearing ball caster**
- Maintenance free
- Working temperature: -50°C to +90°C
- The load capacity decreases linearly at temperatures > 20°C.  
(Example: at 90°C, the load capacity is 60% max.)
- Materials:
  - Case: Stainless steel
  - Plan bearing: polyurethane
  - Ball: Hardened stainless steel

### Advantage

- The knurled outside allows easy fitting into the holes of additional preparation.

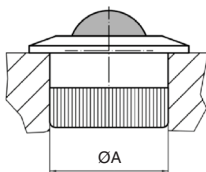
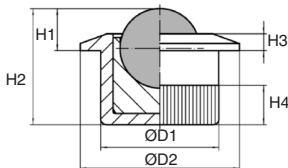
### Assembly

- Fastening is done by pushing the carrier ball with knurled outside
- The carrier balls can be fitted with **BPPL/TOOL** mounting tools.

### Application

- Transport, conveyor, workstation and packaging systems.

**NEW!**



Mounting tool

### DISCOUNTS

Qty	1+	6+	20+	40+	60+
Disc. Price	-10%	-15%	-20%	On request	

Part number	Ball		H1	H2	H3	H4	ØA (H7) Hole	Load capacity (kg)	Weight (g)	Price each 1 to 5	
	ØD	ØD1									ØD2
BPPL6-10	6,5	10,0	13	3,2	11,2	1,2	4,2	10,0	116	4	12,29 €
BPPL8-12	8,5	12,6	17	4,5	12,4	1,8	4,2	12,6	198	8	13,35 €

### Mounting tool

BPPL6-10/TOOL		For carrier ball BPPL6-10							118		25,42 €
BPPL8-12/TOOL		For carrier ball BPPL8-12							125		25,42 €

Dimensions in mm

## Our other products



ACLBT5  
Spherical ended stop for aluminium profile, Spherical ended stop



CHAsb28  
Roll of hinge without pin, Plastic hinge



PRF3232  
Standard aluminium profile, 32 x 32 mm



AC  
Strike for toggle latch, 13mm



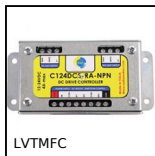
ACLRP  
Wheel for aluminium profile, Integrated bearing



G1  
Steel spur gear, Steel 20NCD2



BH02  
Single housed bearing assembly, Bearing secured with circlips



LVTMFC  
Device for controlling limit switches, For mini-actuator LVT



ASH  
Hoist ring for welding, for straight lifts - for



LOQ  
Manual lock, Manual latch



SBS\_L  
Chain link, Stainless steel



AC156-157  
Strike for toggle latch, 25.5mm

## Complementary products



BPVM  
Miniature ball transfer unit, Miniature to screw



BPVMss  
Stainless steel miniature ball transfer unit, Miniature to screw



BPPL  
Assembly tool for carrier ball, Mounting tool