



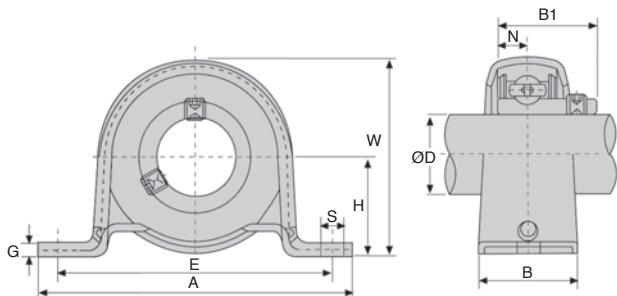
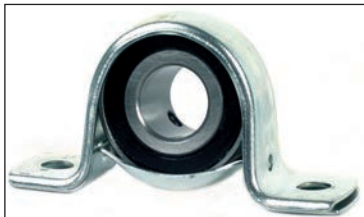
## BPP

## 2 mounting points

- Pressed sheet flanged bearing
- Material : steel

### Uses

- Simple mounted bearing for light loads



Part number	Load (kN)	
	Dynamic C	Static Co
BPP201	9,2	4,48
BPP202	9,2	4,48
BPP203	9,2	4,48
BPP204	12,2	6,30
BPP205	13,3	7,46
BPP206	18,5	10,80
BPP207	24,5	14,60

### DISCOUNTS

Qty	1+	6+	20+	40+	60+
Disc.	List	-10%	-15%	-20%	On request

Part number	ØD	H	A	E	B	S	G	W	Bolt size	B1	N	Weight (kg)	Stock*	Price each 1 to 5
BPP201	12	22,2	86	68	25	9,5	3,2	43,8	M8	22	6,0	0,19	✓	9,39 €
BPP202	15	22,2	86	68	25	9,5	3,2	43,8	M8	22	6,0	0,19	✓	9,44 €
BPP203	17	22,2	86	68	25	9,5	3,2	43,8	M8	22	6,0	0,19	✓	9,79 €
BPP204	20	25,4	98	76	32	9,5	3,2	50,5	M8	25	7,0	0,23	✓	10,93 €
BPP205	25	28,6	108	86	32	11,5	4,0	56,6	M10	27	7,5	0,28	✓	11,55 €
BPP206	30	33,3	117	95	38	11,5	4,0	66,3	M10	30	8,0	0,47	✓	15,86 €
BPP207	35	39,7	129	106	42	11,5	4,6	78,0	M10	32	8,5	0,57	✓	18,59 €

\*Depending on availability - Dimensions in mm

## Our other products



SH4  
Parallel axis helical gear, Steel 20NCD2



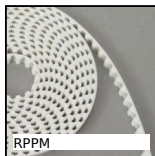
LVT  
Miniature motorised actuator 2A, 2 amperes



CHA60  
Rectangular hinge, drilled or countersunk, Rectangular, drilled or C...



RNAST  
Cam follower without axial guide, Without interior ring



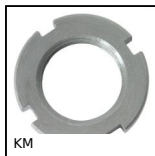
RPPM  
RPP type belt per metre, RPP8 Steel cored polyurethane



HLU  
Spoked handwheel without handle, Aluminium



DOMI50  
Accessories, Clamping lever



KM  
Bearing locknut, Locknut KM



PAS  
Pull handle, Reinforced PA



BVR  
Adjustable screw stop, Steel



SER69K-CLE  
Quarter turn latch for the food industry,



ZDB  
Machined plastic bevel gear, 2:1

## Complementary products



BPF  
Sheet steel flanged bearing for light loads, Sheet steel



BPFL  
Sheet steel flanged bearing for light loads, Sheet steel



BPPss  
Pressed stainless steel pillow block, Stainless steel