

### - Positioning and locating screw LONG-LOK anti-vibration finish

#### - Materials:

##### Steel version:

- Body steel 5.8 black oxidised with nylon "Long Lok" threaded lock
- Ball hardened steel
- Spring steel

##### Stainless steel version:

- Body stainless steel 303
- Ball bright hardened stainless steel 420 with nylon "Long Lok" threaded lock
- Spring stainless steel



Steel version



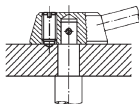
Stainless steel version

### Advantages

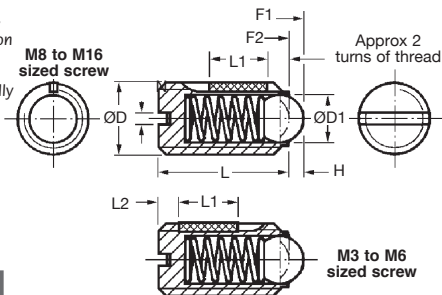
- Vibration proof
- High torque required to unscrew
- Mounts securely in any orientation

### Applications

- Use where plungers are repeatedly installed and removed



Typical application:  
positioning pin



Size	Screwing-in torque (Nm)	Unscrewing torque (Nm)
M3	0,10	0,25
M4	0,10	0,25
M5	0,10	0,25
M6	0,25	0,45
M8	0,40	0,60
M10	0,70	0,80
M12	1,00	1,20
M16	4,20	4,30

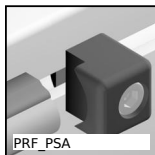
### DISCOUNTS

Qty	1+	6+	20+	50+	100+	250+	400+
Disc.	List	-5%	-10%	-15%	-25%	-40%	On request

Part number		ØD	ØD <sub>1</sub>	L	L <sub>1±0,5</sub>	H	N	F <sub>1</sub> initial	F <sub>2</sub> final	Pressure (N)		Stock*		Prix Uni. 1 à 5	
Steel	Stainless steel									Steel	Stainless steel	Steel	Stainless steel		
BPM3/LOK	BPM3SS/LOK	M3	1,5	7	4	0,5	0,4	1,5	3	✓	✓	7,23 €	12,01 €		
BPM4/LOK	BPM4SS/LOK	M4	2,5	9	5	0,8	0,6	4,0	10	✓	✓	3,71 €	8,24 €		
BPM5/LOK	BPM5SS/LOK	M5	3,0	12	6	0,9	0,8	6,0	11	✓	✓	3,84 €	8,32 €		
BPM6/LOK	BPM6SS/LOK	M6	3,5	14	7	1,0	1,0	9,0	13	✓	✓	3,93 €	8,32 €		
BPM8/LOK	BPM8SS/LOK	M8	5,0	16	8	1,5	1,2	15,0	30	✓	✓	4,75 €	10,57 €		
BPM10/LOK	BPM10SS/LOK	M10	6,0	19	9	2,0	1,6	20,0	35	✓	✓	4,97 €	12,13 €		
BPM12/LOK	BPM12SS/LOK	M12	8,0	22	10	2,5	2,0	30,0	55	✓	-	13,72 €	20,28 €		
BPM16/LOK	BPM16SS/LOK	M16	10,0	24	14	3,5	2,5	65,0	125	-	-	17,59 €	25,46 €		

\*Depending on availability - Dimensions in mm

## Our other products



PRF\_PSA  
Shaft support for aluminium profile, Shaft stop



GSI\_A  
Gas control screw for gas spring, Gas control screw



SRG  
Adjustable latch clamp with strike plate, Stroke from 78mm to 90mm



EKN  
Bellows coupling Gerwah®, from 0.5 to 12Nm



BH01  
Single housed bearing, Bearing fitted with adhesive



SLB  
Indexing plunger, steel class 5.8



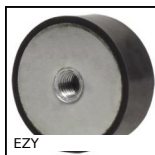
BAC105  
Storage bin, 8mm



BSM  
Spring plunger with internal hexagonal socket, steel body, plastic pin



TBEBASE10  
Economic mini-table with trapezoidal leadscrew, 1kg



EZY  
Cylindrical stop, Steel



T5\_11  
T type timing pulley, T5 aluminium



RURt  
Swivel castor with central hole, Polyurethane - Aluminium rim (Free ...

## Complementary products



BPM  
Slotted spring plunger with ball tip, Steel



BPM\_LOK  
Long-Lok slotted spring plunger with ball tip, LONG-LOK - Stainless ...



BPM-Z  
Plastic slotted spring plunger with ball tip, Plastic body + stainle...



BPMc  
Stainless steel slotted spring plunger with ceramic ball tip, 303 St...