

Ball transfer unit with threaded stud

For heavy loads

BPHT

- Ball transfer unit with solid body
- For heavy loads
- Machined bodies and covers
- Lubricated for life
- Orientation: horizontal with ball upwards
- Unique drainage hole
- Max. speed: 1.5m/s
- Working temperature range: -30 to +100°C
- Materials:

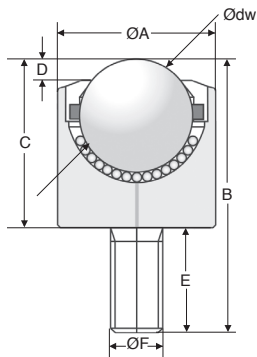
BPHT:galvanised steel body and chromed steel balls

BPHT/AS:galvanised steel body and 420 stainless steel balls



Advantages

- Good resistance to shocks



DISCOUNTS

Qty	1+	6+	20+	40+	60+
Disc.	Net	-10%	-15%	-20%	On request

Part N°	Ødw ball	ØA	B	C	D	E	ØF	Carrying capacity (kg)	Weight (kg)	Price each 1 to 5
Steel body, steel balls										
BPHT15-25	15	25	46	26,0	5	20,0	M8x1,25	60	0,083	13,38 €
BPHT22-36	22	36	62,9	37,5	4,5	25,4	M12 x 1,75	180	0,256	20,95 €
BPHT30-45	30	45	69,2	43,8	6,5	25,4	M12 x 1,75	350	0,440	26,79 €
BPHT45-62	45	62	107,3	66,0	8,5	41,3	M20 x 2,5	600	1,360	81,52 €
Steel body, stainless steel balls										
BPHT15-25/AS	15	25	46	26,0	5	20,0	M8x1,25	50	0,083	11,86 €
BPHT22-36/AS	22	36	62,9	37,5	4,5	25,4	M12 x 1,75	180	0,256	18,62 €
BPHT30-45/AS	30	45	69,2	43,8	6,5	25,4	M12 x 1,75	350	0,430	24,55 €
BPHT45-62/AS	45	62	107,3	66,0	8,5	41,3	M20 x 2,5	600	1,350	99,15 €

All dimensions in mm

Our other products



PRFSRAD

Dual lock for aluminium profile, Quick fitting, self locking door du...



AC

Strike for toggle latch, 12,13,18 and 20mm



MHX

Hexagonal threaded sleeve, Hexagonal - steel



GAL 42

Guide roller for plate chain return, Without ball bearing



PENV

Recessed handle, screw fixing



GP

Spring loaded toggle latch, With padlock-holder



AT5P_AT10P

Connecting plate for AT type timing belts, AT10



BABFCFO

Ball pin socket, Mounting collar with a oval flange



DB

Steel bevel gear, 2:1



PSG125S

Spur gear - precision range, Stainless steel 303



PF70

Worm and wheel gear reducer, up to 164 Nm



GLB

Small 6 lobe threaded handle - female, Technopolymer - Stainless steel

Complementary products



BPH

Ball transfer unit plain fit, High



BPHT

Ball transfer unit bolt fitting, Heavy