

Pressed stainless steel bearing for light loads

BPFSS

Flange with 3 mounting holes

- Pressed sheet steel housing
- Material: stainless steel

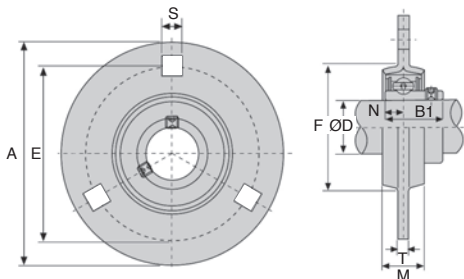
NEW:
stainless steel
range

Application

- Mounting a simple bearing, suitable for light loads only



stainless
steel



DISCOUNTS

Qty	1+	6+	20+	40+	60+
Disc.	List	-10%	-15%	-20%	On request

Part number	ØD	A	E	T	M	S	F	Bolt size	B1	N	Weight (kg)	Stock*	Price each 1 to 5
BPF204/SS	20	90	71	2	16	9	56	M8	25	7	0,29	✓	19,50 €
BPF205/SS	25	95	76	2	18	9	60	M8	27	7,5	0,34	✓	24,32 €
BPF206/SS	30	113	90	2,6	18	11	71	M8	30	8	0,55	✓	13,79 €
BPF207/SS	35	122	100	2,6	20	11	81	M10	32	8,5	0,69	-	18,17 €

Dimensions in mm

Our other products



712_026

Knob for gripping,
Mushroom



AT10-BAR

Toothed bar stock,
AT10



AT5P_AT10P

Connecting plate,
AT10



M0

Worm, Hardened steel



M0

Worm, Non hardened
steel



GMC_GMK_BR

Clip for guide, Flat or
rounded



AC144

Catch plate for toggle
latch, 22mm



PRF-SCL

Closing system, Lock
for sliding doors



CF

Cam follower,
Standard - steel



DBL805

Idler, Range 805



LRM2

Trapezoidal nut,
Bronze - 2 threads



LVT

Miniature motorised
actuator, 1 amper

Complementary products



BPPss

Pillow block, Stainless
steel



BPFLss

Flange bearing,
Stainless steel



BPF

Flange bearing, Sheet
steel



UCF_SS

Flange bearing,
Stainless steel