

# Pressed stainless steel bearing for light loads

## BPFSS

## Flange with 3 mounting holes

- Pressed sheet steel housing
- Material: stainless steel

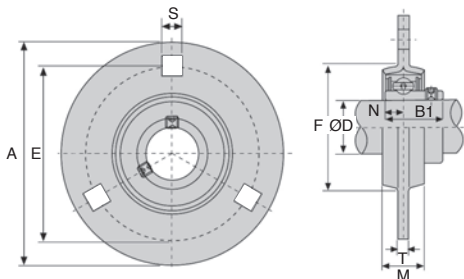
**NEW:**  
stainless steel  
range

### Application

- Mounting a simple bearing, suitable for light loads only



stainless  
steel



### DISCOUNTS

Qty	1+	6+	20+	40+	60+
Disc.	List	-10%	-15%	-20%	On request

Part number	ØD	A	E	T	M	S	F	Bolt size	B1	N	Weight (kg)	Stock*	Price each 1 to 5
BPF204/SS	20	90	71	2	16	9	56	M8	25	7	0,29	✓	19,50 €
BPF205/SS	25	95	76	2	18	9	60	M8	27	7,5	0,34	✓	24,32 €
BPF206/SS	30	113	90	2,6	18	11	71	M8	30	8	0,55	✓	13,79 €
BPF207/SS	35	122	100	2,6	20	11	81	M10	32	8,5	0,69	-	18,17 €

Dimensions in mm

## Our other products



PSG25S

Spur gear - precision range, Stainless steel 316



ACLBTS

Spherical ended stop for aluminium profile, Spherical ended stop



H1

Crossed helical gear crossed axis at 90°, Steel 20NCD2



CHB

Worm and wheel gear reducer, up to 22 Nm



GLP

Small 6 lobe threaded handle - male, Technopolymer - Stainless steel



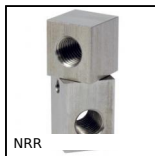
BAN

Angular clamp, Universal



D-PAR\_SS

Stainless steel progressive stop, stainless steel



NRR

Adjustable support clamp, Adjustable support clamp



CF

Cam follower, Standard - steel



SRG

Adjustable latch clamp with strike plate, Stroke from



HBM

Adjustment bushing for half-rail guide, Adjustment bushing



SNG

Stainless/Polymer pillow block bearing, Cast iron - Split pillow

## Complementary products



BPPSS

Pressed stainless steel pillow block, Stainless steel



BPFSS

Pressed stainless steel flange bearing, Stainless steel



BPF

Sheet steel flanged bearing for light loads, Sheet steel



UCF\_SS

Stainless steel flanged bearing, Stainless steel